



Distributor of Molex Connector Corporation: Excellent Integrated System Limited

Datasheet of 0192670275 - 3/4 INCH HST RED LG 100' SPOOL

Contact us: [sales@integrated-circuit.com](mailto:sales@integrated-circuit.com) Website: [www.integrated-circuit.com](http://www.integrated-circuit.com)

---

## Excellent Integrated System Limited

Stocking Distributor

Click to view price, real time Inventory, Delivery & Lifecycle Information:

[Molex Connector Corporation](#)

[0192670275](#)

For any questions, you can email us directly:

[sales@integrated-circuit.com](mailto:sales@integrated-circuit.com)

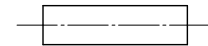


Distributor of Molex Connector Corporation: Excellent Integrated System Limited  
 Datasheet of 0192670275 - 3/4 INCH HST RED LG 100' SPOOL

Contact us: sales@integrated-circuit.com Website: www.integrated-circuit.com

BLACK		WHITE		RED		BLUE		CLEAR		YELLOW		MIN	MAX	RECOVERED	LENGTH
MATERIAL NUMBER	ENGINEERING NUMBER	MATERIAL NUMBER	ENGINEERING NUMBER	MATERIAL NUMBER	ENGINEERING NUMBER	MATERIAL NUMBER	ENGINEERING NUMBER	MATERIAL NUMBER	ENGINEERING NUMBER	MATERIAL NUMBER	ENGINEERING NUMBER	EXPANDED ID 'D'	RECOVERED ID	WALL THK REF	FEET/METERS
192670015	PF-3/64-1BK	192670016	PF-3/64-1WT	192670017	PF-3/64-1RD	192670018	PF-3/64-1BL	192670019	PF-3/64-1CL	192670020	PF-3/64-1YL	.046/1.17	.023/0.58	.018/0.46	4.0/1.2
192670045	PF-1/16-1BK	192670046	PF-1/16-1WT	192670047	PF-1/16-1RD	192670048	PF-1/16-1BL	192670049	PF-1/16-1CL	192670050	PF-1/16-1YL	.063/1.60	.031/0.79	.018/0.46	
192670075	PF-3/32-1BK	192670076	PF-3/32-1WT	192670077	PF-3/32-1RD	192670078	PF-3/32-1BL	192670079	PF-3/32-1CL	192670080	PF-3/32-1YL	.093/2.36	.046/1.17	.020/0.51	
192670105	PF-1/8-1BK	192670106	PF-1/8-1WT	192670107	PF-1/8-1RD	192670108	PF-1/8-1BL	192670109	PF-1/8-1CL	192670110	PF-1/8-1YL	.125/3.18	.062/1.57	.020/0.51	
192670135	PF-3/16-1BK	192670136	PF-3/16-1WT	192670137	PF-3/16-1RD	192670138	PF-3/16-1BL	192670139	PF-3/16-1CL	192670140	PF-3/16-1YL	.187/4.75	.093/2.36	.020/0.51	
192670165	PF-1/4-1BK	192670166	PF-1/4-1WT	192670167	PF-1/4-1RD	192670168	PF-1/4-1BL	192670169	PF-1/4-1CL	192670170	PF-1/4-1YL	.250/6.35	.125/3.18	.025/0.64	
192670195	PF-3/8-1BK	192670196	PF-3/8-1WT	192670197	PF-3/8-1RD	192670198	PF-3/8-1BL	192670199	PF-3/8-1CL	192670200	PF-3/8-1YL	.375/9.53	.187/4.75	.025/0.64	
192670225	PF-1/2-1BK	192670226	PF-1/2-1WT	192670227	PF-1/2-1RD	192670228	PF-1/2-1BL	192670229	PF-1/2-1CL	192670230	PF-1/2-1YL	.500/12.70	.250/6.35	.025/0.64	
192670255	PF-3/4-1BK	192670256	PF-3/4-1WT	192670257	PF-3/4-1RD	192670258	PF-3/4-1BL	192670259	PF-3/4-1CL	192670260	PF-3/4-1YL	.750/19.05	.375/9.53	.030/0.76	
192670285	PF-1-1BK	192670286	PF-1-1WT	192670287	PF-1-1RD	192670288	PF-1-1BL	192670289	PF-1-1CL	192670290	PF-1-1YL	1.000/25.40	.500/12.70	.035/0.89	
192670315	PF-1-1/2-1BK	192670316	PF-1-1/2-1WT	192670317	PF-1-1/2-1RD	192670318	PF-1-1/2-1BL	192670319	PF-1-1/2-1CL	192670320	PF-1-1/2-1YL	1.500/38.10	.750/19.05	.040/1.02	
192670345	PF-2-1BK	192670346	PF-2-1WT	192670347	PF-2-1RD	192670348	PF-2-1BL	192670349	PF-2-1CL	192670350	PF-2-1YL	2.000/50.80	1.000/25.40	.045/1.14	
192670375	PF-3-1BK	192670376	PF-3-1WT	192670377	PF-3-1RD	192670378	PF-3-1BL	192670379	PF-3-1CL	192670380	PF-3-1YL	3.000/76.20	1.500/38.10	.050/1.27	
192670405	PF-4-1BK	192670406	PF-4-1WT	192670407	PF-4-1RD	192670408	PF-4-1BL	192670409	PF-4-1CL	192670410	PF-4-1YL	4.000/101.60	2.000/50.80	.055/1.40	
192670033	PF-3/64-4BK	192670034	PF-3/64-4WT	192670035	PF-3/64-4RD	192670036	PF-3/64-4BL	192670037	PF-3/64-4CL	192670038	PF-3/64-4YL	.046/1.17	.023/0.58	.018/0.46	
192670063	PF-1/16-4BK	192670064	PF-1/16-4WT	192670065	PF-1/16-4RD	192670066	PF-1/16-4BL	192670067	PF-1/16-4CL	192670068	PF-1/16-4YL	.063/1.60	.031/0.79	.018/0.46	
192670093	PF-3/32-4BK	192670094	PF-3/32-4WT	192670095	PF-3/32-4RD	192670096	PF-3/32-4BL	192670097	PF-3/32-4CL	192670098	PF-3/32-4YL	.093/2.36	.046/1.17	.020/0.51	
192670123	PF-1/8-4BK	192670124	PF-1/8-4WT	192670125	PF-1/8-4RD	192670126	PF-1/8-4BL	192670127	PF-1/8-4CL	192670128	PF-1/8-4YL	.125/3.18	.062/1.57	.020/0.51	
192670153	PF-3/8-4BK	192670154	PF-3/8-4WT	192670155	PF-3/8-4RD	192670156	PF-3/8-4BL	192670157	PF-3/8-4CL	192670158	PF-3/8-4YL	.187/4.75	.093/2.36	.020/0.51	
192670183	PF-1/4-4BK	192670184	PF-1/4-4WT	192670185	PF-1/4-4RD	192670186	PF-1/4-4BL	192670187	PF-1/4-4CL	192670188	PF-1/4-4YL	.250/6.35	.125/3.18	.025/0.64	
192670213	PF-3/8-4BK	192670214	PF-3/8-4WT	192670215	PF-3/8-4RD	192670216	PF-3/8-4BL	192670217	PF-3/8-4CL	192670218	PF-3/8-4YL	.375/9.53	.187/4.75	.025/0.64	
192670243	PF-1/2-4BK	192670244	PF-1/2-4WT	192670245	PF-1/2-4RD	192670246	PF-1/2-4BL	192670247	PF-1/2-4CL	192670248	PF-1/2-4YL	.500/12.70	.250/6.35	.025/0.64	
192670273	PF-3/4-4BK	192670274	PF-3/4-4WT	192670275	PF-3/4-4RD	192670276	PF-3/4-4BL	192670277	PF-3/4-4CL	192670278	PF-3/4-4YL	.750/19.05	.375/9.53	.030/0.76	
192670303	PF-1-4BK	192670304	PF-1-4WT	192670305	PF-1-4RD	192670306	PF-1-4BL	192670307	PF-1-4CL	192670308	PF-1-4YL	1.000/25.40	.500/12.70	.035/0.89	
192670333	PF-1-1/2-4BK	192670334	PF-1-1/2-4WT	192670335	PF-1-1/2-4RD	192670336	PF-1-1/2-4BL	192670337	PF-1-1/2-4CL	192670338	PF-1-1/2-4YL	1.500/38.10	.750/19.05	.040/1.02	
192670363	PF-2-4BK	192670364	PF-2-4WT	192670365	PF-2-4RD	192670366	PF-2-4BL	192670367	PF-2-4CL	192670368	PF-2-4YL	2.000/50.80	1.000/25.40	.045/1.14	
192670393	PF-3-4BK	192670394	PF-3-4WT	192670395	PF-3-4RD	192670396	PF-3-4BL	192670397	PF-3-4CL	192670398	PF-3-4YL	3.000/76.20	1.500/38.10	.050/1.27	
192670423	PF-4-4BK	192670424	PF-4-4WT	192670425	PF-4-4RD	192670426	PF-4-4BL	192670427	PF-4-4CL	192670428	PF-4-4YL	4.000/101.60	2.000/50.80	.055/1.40	
192670039	PF-3/64-5BK	192670040	PF-3/64-5WT	192670041	PF-3/64-5RD	192670042	PF-3/64-5BL	192670043	PF-3/64-5CL	192670044	PF-3/64-5YL	.046/1.17	.023/0.58	.018/0.46	
192670069	PF-1/16-5BK	192670070	PF-1/16-5WT	192670071	PF-1/16-5RD	192670072	PF-1/16-5BL	192670073	PF-1/16-5CL	192670074	PF-1/16-5YL	.063/1.60	.031/0.79	.018/0.46	
192670099	PF-3/32-5BK	192670100	PF-3/32-5WT	192670101	PF-3/32-5RD	192670102	PF-3/32-5BL	192670103	PF-3/32-5CL	192670104	PF-3/32-5YL	.093/2.36	.046/1.17	.020/0.51	
192670129	PF-1/8-5BK	192670130	PF-1/8-5WT	192670131	PF-1/8-5RD	192670132	PF-1/8-5BL	192670133	PF-1/8-5CL	192670134	PF-1/8-5YL	.125/3.18	.062/1.57	.020/0.51	
192670159	PF-3/16-5BK	192670160	PF-3/16-5WT	192670161	PF-3/16-5RD	192670162	PF-3/16-5BL	192670163	PF-3/16-5CL	192670164	PF-3/16-5YL	.187/4.75	.093/2.36	.020/0.51	
192670189	PF-1/4-5BK	192670190	PF-1/4-5WT	192670191	PF-1/4-5RD	192670192	PF-1/4-5BL	192670193	PF-1/4-5CL	192670194	PF-1/4-5YL	.250/6.35	.125/3.18	.025/0.64	
192670219	PF-3/8-5BK	192670220	PF-3/8-5WT	192670221	PF-3/8-5RD	192670222	PF-3/8-5BL	192670223	PF-3/8-5CL	192670224	PF-3/8-5YL	.375/9.53	.187/4.75	.025/0.64	
192670249	PF-1/2-5BK	192670250	PF-1/2-5WT	192670251	PF-1/2-5RD	192670252	PF-1/2-5BL	192670253	PF-1/2-5CL	192670254	PF-1/2-5YL	.500/12.70	.250/6.35	.025/0.64	

SALES DRAWING



NOTES:

- MATERIAL: POLYOLEFIN
- OTHER CUT LENGTHS ARE AVAILABLE.
- PARTS ARE RoHS COMPLIANT.

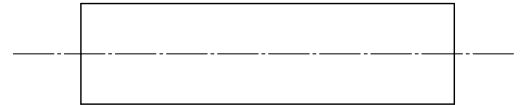
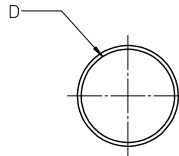
CHANGED TITLE EC NO: 1F62003-0982 DRAWING JASO1 20130100 CHKD: JACQUEL 20130100 APPR: JACQUEL 20130101	QUALITY SYMBOLS ▽=0 ▽=0	GENERAL TOLERANCES (UNLESS SPECIFIED)	DIMENSION STYLE	SCALE	DESIGN UNITS	THIRD ANGLE PROJECTION	
		4 PLACES ± --- ± --- 3 PLACES ± --- ± --- 2 PLACES ± --- ± --- 1 PLACE ± --- ± ---	IN/MM	1:1	INCH		
		DRAWN BY BENDERLE CHECKED BY DEROSS APPROVED BY DEROSS	DATE 2004/08/04	DATE 2004/08/04	DATE 2004/08/04	TITLE	POLYOLEFIN HEAT SHRINK TUBING 19267 SERIES
		MATERIAL NO. SEE CHART SIZE C	DOCUMENT NO. SD-19267-001	SHEET NO. 1 OF 1	MOLEX INCORPORATED	THIS DRAWING CONTAINS INFORMATION THAT IS PROPRIETARY TO MOLEX INCORPORATED AND SHOULD NOT BE USED WITHOUT WRITTEN PERMISSION	

BLACK		WHITE		RED		CLEAR		YELLOW		MIN	MAX	RECOVERED	LENGTH
MATERIAL NUMBER	ENGINEERING NUMBER	MATERIAL NUMBER	ENGINEERING NUMBER	MATERIAL NUMBER	ENGINEERING NUMBER	MATERIAL NUMBER	ENGINEERING NUMBER	MATERIAL NUMBER	ENGINEERING NUMBER	EXPANDED ID 'D'	RECOVERED ID	WALL THK REF	FEET/METERS
192680018	PFV-3/64-1BK	192680019	PFV-3/64-1WT	192680020	PFV-3/64-1RD	192680021	PFV-3/64-1CL	192680022	PFV-3/64-1YL	.046/1.17	.023/0.58	.018/0.46	4.0/1.2
192680043	PFV-1/16-1BK	192680044	PFV-1/16-1WT	192680045	PFV-1/16-1RD	192680046	PFV-1/16-1CL	192680047	PFV-3/32-1YL	.063/1.60	.032/0.81	.018/0.46	
192680068	PFV-3/32-1BK	192680069	PFV-3/32-1WT	192680070	PFV-3/32-1RD	192680071	PFV-3/32-1CL	192680072	PFV-3/32-1YL	.093/2.36	.046/1.17	.020/0.51	
192680093	PFV-1/8-1BK	192680094	PFV-1/8-1WT	192680095	PFV-1/8-1RD	192680096	PFV-1/8-1CL	192680097	PFV-1/8-1YL	.125/3.18	.063/1.60	.020/0.51	
192680118	PFV-3/16-1BK	192680119	PFV-3/16-1WT	192680120	PFV-3/16-1RD	192680121	PFV-3/16-1CL	192680122	PFV-3/16-1YL	.187/4.75	.093/2.36	.020/0.51	
192680143	PFV-1/4-1BK	192680144	PFV-1/4-1WT	192680145	PFV-1/4-1RD	192680146	PFV-1/4-1CL	192680147	PFV-1/4-1YL	.250/6.35	.125/3.18	.025/0.64	
192680193	PFV-3/8-1BK	192680194	PFV-3/8-1WT	192680195	PFV-3/8-1RD	192680196	PFV-3/8-1CL	192680197	PFV-3/8-1YL	.375/9.53	.187/4.75	.025/0.64	
192680218	PFV-1/2-1BK	192680219	PFV-1/2-1WT	192680220	PFV-1/2-1RD	192680221	PFV-1/2-1CL	192680222	PFV-1/2-1YL	.500/12.70	.250/6.35	.025/0.64	
192680243	PFV-5/8-1BK	192680244	PFV-5/8-1WT	192680245	PFV-5/8-1RD	192680246	PFV-5/8-1CL	192680247	PFV-5/8-1YL	.625/15.88	.313/7.95	.025/0.64	
192680268	PFV-3/4-1BK	192680269	PFV-3/4-1WT	192680270	PFV-3/4-1RD	192680271	PFV-3/4-1CL	192680272	PFV-3/4-1YL	.750/19.05	.375/9.53	.035/0.89	
192680293	PFV-1-1BK	192680294	PFV-1-1WT	192680295	PFV-1-1RD	192680296	PFV-1-1CL	192680297	PFV-1-1YL	1.000/25.40	.500/12.70	.035/0.89	
192680318	PFV-1-1/4-1BK	192680319	PFV-1-1/4-1WT	192680320	PFV-1-1/4-1RD	192680321	PFV-1-1/4-1CL	192680322	PFV-1-1/4-1YL	1.250/31.75	.630/16.00	.035/0.89	
192680343	PFV-1-1/2-1BK	192680344	PFV-1-1/2-1WT	192680345	PFV-1-1/2-1RD	192680346	PFV-1-1/2-1CL	192680347	PFV-1-1/2-1YL	1.500/38.10	.750/19.05	.040/1.02	
192680368	PFV-2-1BK	192680369	PFV-2-1WT	192680370	PFV-2-1RD	192680371	PFV-2-1CL	192680372	PFV-2-1YL	2.000/50.80	1.000/25.40	.045/1.14	
192680393	PFV-3-1BK	092680394	PFV-3-1WT	192680395	PFV-3-1RD	192680396	PFV-3-1CL	192680397	PFV-3-1YL	3.000/76.20	1.500/38.10	.050/1.27	
192680418	PFV-4-1BK	192680419	PFV-4-1WT	192680420	PFV-4-1RD	192680421	PFV-4-1CL	192680422	PFV-4-1YL	4.000/101.60	2.000/50.80	.055/1.40	
192680033	PFV-3/64-4BK	192680034	PFV-3/64-4WT	192680035	PFV-3/64-4RD	192680036	PFV-3/64-4CL	192680037	PFV-3/64-4YL	.046/1.17	.023/0.58	.018/0.46	
192680058	PFV-1/16-4BK	192680059	PFV-1/16-4WT	192680060	PFV-1/16-4RD	192680061	PFV-1/16-4CL	192680062	PFV-1/16-4YL	.063/1.60	.032/0.81	.018/0.46	
192680083	PFV-3/32-4BK	192680084	PFV-3/32-4WT	192680085	PFV-3/32-4RD	192680086	PFV-3/32-4CL	192680087	PFV-3/32-4YL	.093/2.36	.046/1.17	.020/0.51	
192680108	PFV-1/8-4BK	192680109	PFV-1/8-4WT	192680110	PFV-1/8-4RD	192680111	PFV-1/8-4CL	192680112	PFV-1/8-4YL	.125/3.18	.063/1.60	.020/0.51	
192680133	PFV-3/16-4BK	192680134	PFV-3/16-4WT	192680135	PFV-3/16-4RD	192680136	PFV-3/16-4CL	192680137	PFV-3/16-4YL	.187/4.75	.093/2.36	.020/0.51	
192680158	PFV-1/4-4BK	192680159	PFV-1/4-4WT	192680160	PFV-1/4-4RD	192680161	PFV-1/4-4CL	192680162	PFV-1/4-4YL	.250/6.35	.125/3.18	.025/0.64	
192680208	PFV-3/8-4BK	192680209	PFV-3/8-4WT	192680210	PFV-3/8-4RD	192680211	PFV-3/8-4CL	192680212	PFV-3/8-4YL	.375/9.53	.187/4.75	.025/0.64	
192680233	PFV-1/2-4BK	192680234	PFV-1/2-4WT	192680235	PFV-1/2-4RD	192680236	PFV-1/2-4CL	192680237	PFV-1/2-4YL	.500/12.70	.250/6.35	.025/0.64	
192680258	PFV-5/8-4BK	192680259	PFV-5/8-4WT	192680260	PFV-5/8-4RD	192680261	PFV-5/8-4CL	192680262	PFV-5/8-5YL	.625/15.88	.313/7.95	.025/0.64	
192680283	PFV-3/4-4BK	192680284	PFV-3/4-4WT	192680285	PFV-3/4-4RD	192680286	PFV-3/4-4CL	192680287	PFV-3/4-4YL	.750/19.05	.375/9.53	.035/0.89	
192680308	PFV-1-4BK	192680309	PFV-1-4WT	192680310	PFV-1-4RD	192680311	PFV-1-4CL	192680312	PFV-1-4YL	1.000/25.40	.500/12.70	.035/0.89	
192680333	PFV-1-1/4-4BK	192680334	PFV-1-1/4-4WT	192680335	PFV-1-1/4-4RD	192680336	PFV-1-1/4-4CL	192680337	PFV-1-1/4-4YL	1.250/31.75	.630/16.00	.035/0.89	
192680038	PFV-3/64-5BK	192680039	PFV-3/64-5WT	192680040	PFV-3/64-5RD	192680041	PFV-3/64-5CL	192680042	PFV-3/64-5YL	.046/1.17	.023/0.58	.018/0.46	
192680063	PFV-1/16-5BK	192680064	PFV-1/16-5WT	192680065	PFV-1/16-5RD	192680066	PFV-1/16-5CL	192680067	PFV-1/16-5YL	.063/1.60	.032/0.81	.018/0.46	
192680088	PFV-3/32-5BK	192680089	PFV-3/32-5WT	192680090	PFV-3/32-5RD	192680091	PFV-3/32-5CL	192680092	PFV-3/32-5YL	.093/2.36	.046/1.17	.020/0.51	
192680113	PFV-1/8-5BK	192680114	PFV-1/8-5WT	192680115	PFV-1/8-5RD	192680116	PFV-1/8-5CL	192680117	PFV-1/8-5YL	.125/3.18	.063/1.60	.020/0.51	
192680138	PFV-3/16-5BK	192680139	PFV-3/16-5WT	192680140	PFV-3/16-5RD	192680141	PFV-3/16-5CL	192680142	PFV-3/16-5YL	.187/4.75	.093/2.36	.020/0.51	
192680163	PFV-1/4-5BK	192680164	PFV-1/4-5WT	192680165	PFV-1/4-5RD	192680166	PFV-1/4-5CL	192680167	PFV-1/4-5YL	.250/6.35	.125/3.18	.025/0.64	
192680213	PFV-3/8-5BK	192680214	PFV-3/8-5WT	192680215	PFV-3/8-5RD	192680216	PFV-3/8-5CL	192680217	PFV-3/8-5YL	.375/9.53	.187/4.75	.025/0.64	
192680238	PFV-1/2-5BK	192680239	PFV-1/2-5WT	192680240	PFV-1/2-5RD	192680241	PFV-1/2-5CL	192680242	PFV-1/2-5YL	.500/12.70	.250/6.35	.025/0.64	
192680263	PFV-5/8-5BK	192680264	PFV-5/8-5WT	192680265	PFV-5/8-5RD	192680266	PFV-5/8-5CL	192680267	PFV-5/8-5YL	.625/15.88	.313/7.95	.025/0.64	
192680358	PFV-1-1/2-4BK	192680359	PFV-1-1/2-4WT	192680360	PFV-1-1/2-4RD	192680361	PFV-1-1/2-4CL	192680362	PFV-1-1/2-4YL	1.500/38.10	.750/19.05	.040/1.02	
192680383	PFV-2-4BK	192680384	PFV-2-4WT	192680385	PFV-2-4RD	192680386	PFV-2-4CL	192680387	PFV-2-4YL	2.000/50.80	1.000/25.40	.045/1.14	
192680408	PFV-3-4BK	192680409	PFV-3-4WT	192680410	PFV-3-4RD	192680411	PFV-3-4CL	192680412	PFV-3-4YL	3.000/76.20	1.500/38.10	.050/1.27	
192680433	PFV-4-4BK	192680434	PFV-4-4WT	192680435	PFV-4-4RD	192680436	PFV-4-4CL	192680437	PFV-4-4YL	4.000/101.60	2.000/50.80	.055/1.40	

NOTES:  
 1. MATERIAL: PVC.  
 2. OTHER CUT LENGTHS ARE AVAILABLE.  
 3. PARTS ARE ROHS COMPLIANT.

CHANGED TITLE EC NO: 1P2003-0962 DRAWN BY: JASOT 20101010 CHKD: MALNEIL 20101010 APPR: MALNEIL 20101010	QUALITY SYMBOLS ▽=0 ▽=0	GENERAL TOLERANCES (UNLESS SPECIFIED)		DIMENSION STYLE		SCALE	DESIGN UNITS	THIRD ANGLE PROJECTION
		mm	INCH	IN/MM		1:1	INCH	☉
DRAFT WHERE APPLICABLE MUST REMAIN WITHIN DIMENSIONS	C1	4 PLACES ± --- ± ---		DRAWN BY: BENDERLE DATE: 2004/09/23		TITLE: PVC, HEAT SHRINK TUBING 19268 SERIES		
		3 PLACES ± --- ± .010		CHECKED BY: R DEROSS DATE: 2004/09/23		MOLEX MOLEX INCORPORATED		
		2 PLACES ± 0.25 ± .02		APPROVED BY: JFMURPHY DATE: 2010/04/07		DOCUMENT NO. SD-19268-001 SHEET NO. 1 OF 1		
		1 PLACE ± 0.5 ± ---		ANGULAR ± ---°		THIS DRAWING CONTAINS INFORMATION THAT IS PROPRIETARY TO MOLEX INCORPORATED AND SHOULD NOT BE USED WITHOUT WRITTEN PERMISSION		

10		9		8		7		6		5		4		3		2		19269				
BLACK		CLEAR		MIN		MAX		RECOVERED		LENGTH												
MATERIAL NUMBER	ENGINEERING NUMBER	MATERIAL NUMBER	ENGINEERING NUMBER	EXPANDED ID "D"	RECOVERED ID	WALL THK REF	FEET/METERS															
192690008	PF3-1/8-1BK			.125/3.018	.040/1.02	.038/0.97	4.0/1.2															
192690013	PF3-3/16-1BK			.187/4.75	.060/1.52	.045/1.14																
		192690043	PF3-3/16-1CL	.225/5.72	.050/1.27	.045/1.14																
192690018	PF3-1/4-1BK			.250/6.35	.080/2.03	.047/1.19																
		192690048	PF3-1/4-1CL	.293/7.44	.065/1.65	.047/1.19																
192690023	PF3-3/8-1BK			.375/9.53	.120/3.05	.050/1.27																
		192690053	PF3-3/8-1CL	.427/10.85	.095/2.43	.050/1.27																
192690028	PF3-1/2-1BK			.500/12.70	.157/3.99	.055/1.40																
		192690058	PF3-1/2-1CL	.700/17.78	.175/4.45	.055/1.40																
192690033	PF3-3/4-1BK			.750/19.05	.230/5.84	.065/1.65																
192690038	PF3-1-1BK			1.000/25.40	.320/8.13	.075/1.90																



SALES DRAWING

NOTES:

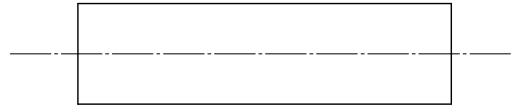
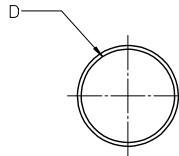
(A1)

- MATERIAL: POLYOLEFIN WITH ADHESIVE LINER.
- OTHER CUT LENGTHS ARE AVAILABLE.
- PARTS ARE RoHS COMPLIANT.

(A1)

CORRECT MAT'L E.C. NO: IPG/2013-0982 DRAWN BY: JASOT 2013/01/10 CHKD: JACNETL 2013/01/10 APPR: JACNETL 2013/01/31 REV: A1	QUALITY SYMBOLS	GENERAL TOLERANCES (UNLESS SPECIFIED)		DIMENSION STYLE		SCALE	DESIGN UNITS	THIRD ANGLE PROJECTION	
	$\nabla=0$ $\sphericalangle=0$			IN/MM		1:1	INCH		
		4 PLACES	± ---	± ---	DRAWN BY	DATE	TITLE		
		3 PLACES	± ---	± .010	BENDERLE	2004/09/23	(A1) POLYOLEFIN W/ ADHESIVE LINER HEAT SHRINK TUBING 19269 SERIES		
	2 PLACES	± 0.25	± .02	CHECKED BY	DATE	MATERIAL NO.			
	1 PLACE	± 0.51	± ---	R DEROSS	2004/09/23	DOCUMENT NO.			
	ANGULAR ± ---°		APPROVED BY		DATE	SHEET NO.			
	DRAFT WHERE APPLICABLE MUST REMAIN WITHIN DIMENSIONS		R DEROSS		2004/09/23	1 OF 1			
			MATERIAL NO.		SEE CHART				
			DOCUMENT NO.		SD-19269-001				
THIS DRAWING CONTAINS INFORMATION THAT IS PROPRIETARY TO MOLEX INCORPORATED AND SHOULD NOT BE USED WITHOUT WRITTEN PERMISSION									

BLACK		RED		MIN	MAX	RECOVERED	LENGTH
MATERIAL NUMBER	ENGINEERING NUMBER	MATERIAL NUMBER	ENGINEERING NUMBER	EXPANDED ID "D"	RECOVERED ID	WALL THK REF	FEET/METERS
192700008	PFB-04-1BK	192700013	PFB-04-1RD	.400/10.16	.150/3.81	.060/1.53	4.0/1.2
192700018	PFB-07-1BK	192700023	PFB-07-1RD	.750/19.05	.220/5.59	.095/2.41	
192700028	PFB-11-1BK	192700033	PFB-11-1RD	1.100/27.94	.375/9.53	.120/3.05	
192700038	PFB-15-1BK	192700043	PFB-15-1RD	1.500/38.10	.500/19.05	.140/3.56	
192700048	PFB-20-1BK	192700053	PFB-20-1RD	2.000/50.80	.750/19.05	.155/3.98	
192700058	PFB-30-1BK	192700063	PFB-30-1RD	3.540/89.92	1.18/29.97	.155/3.98	
192700068	PFB-40-1BK	192700073	PFB-40-1RD	4.72/119.89	1.57/39.88	.170/4.37	



SALES DRAWING

NOTES:

- MATERIAL: POLYOLEFIN
- OTHER CUT LENGTHS ARE AVAILABLE.
- PARTS ARE ROHS COMPLIANT.

(A1)

<b>CHANGED TITLE</b> E.C. NO: IPG/2013-0982 DRAWING: JASO1 2013/01/10 CHKD: IMACNEIL 2013/01/10 APPR: IMACNEIL 2013/01/31 REV: A1	<b>QUALITY SYMBOLS</b> ▽=0 ▽=0	<b>GENERAL TOLERANCES (UNLESS SPECIFIED)</b> <table border="1"> <thead> <tr> <th></th> <th>mm</th> <th>INCH</th> </tr> </thead> <tbody> <tr> <td>4 PLACES</td> <td>± .---</td> <td>± .---</td> </tr> <tr> <td>3 PLACES</td> <td>± .---</td> <td>± .010</td> </tr> <tr> <td>2 PLACES</td> <td>± 0.25</td> <td>± .02</td> </tr> <tr> <td>1 PLACE</td> <td>± 0.51</td> <td>± .---</td> </tr> <tr> <td colspan="3">ANGULAR ± .---</td> </tr> </tbody> </table>		mm	INCH	4 PLACES	± .---	± .---	3 PLACES	± .---	± .010	2 PLACES	± 0.25	± .02	1 PLACE	± 0.51	± .---	ANGULAR ± .---			<b>DIMENSION STYLE</b> IN/MM	<b>SCALE</b> 1:1	<b>DESIGN UNITS</b> INCH	THIRD ANGLE PROJECTION
		mm	INCH																					
	4 PLACES	± .---	± .---																					
	3 PLACES	± .---	± .010																					
2 PLACES	± 0.25	± .02																						
1 PLACE	± 0.51	± .---																						
ANGULAR ± .---																								
		DRAWN BY: BENDERLE CHECKED BY: R. DEROSS APPROVED BY: R. DEROSS	DATE: 2004/09/23 DATE: 2004/09/23 DATE: 2004/09/23	<b>TITLE</b> POLYOLEFIN HEAT SHRINK TUBING 19270 SERIES																				
		DRAFT WHERE APPLICABLE MUST REMAIN WITHIN DIMENSIONS	<b>MATERIAL NO.</b> SEE CHART	<b>MOLEX INCORPORATED</b>																				
			<b>SIZE</b> B	THIS DRAWING CONTAINS INFORMATION THAT IS PROPRIETARY TO MOLEX INCORPORATED AND SHOULD NOT BE USED WITHOUT WRITTEN PERMISSION																				