

Excellent Integrated System Limited

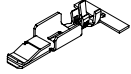
Stocking Distributor

Click to view price, real time Inventory, Delivery & Lifecycle Information:

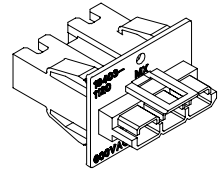
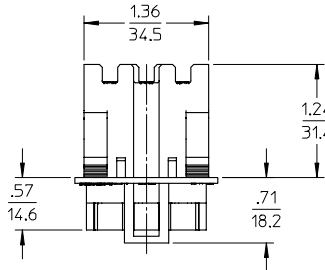
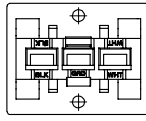
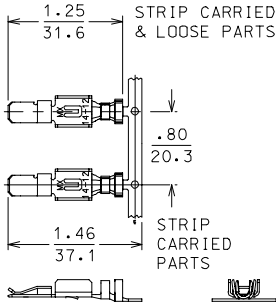
[Molex Connector Corporation](#)
[0194031120](#)

For any questions, you can email us directly:
sales@integrated-circuit.com

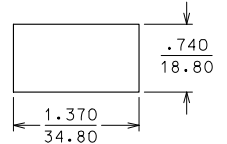
MATERIAL NUMBER	DESCRIPTION
194031120	SC HEADER
194031130	TERMINAL, STRIP CARRIED
194031131	TERMINAL, LOOSE PIECE



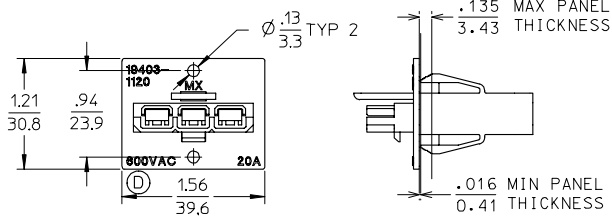
ISOMETRIC VIEW
TERMINAL, STRIP CARRIED



ISOMETRIC VIEW
SC HEADER



RECOMMENDED PANEL CUTOUT



SALES DRAWING

NOTES:

- 1) TERMINAL MATERIAL: HIGH COPPER ALLOY
PLATING: TIN
- 2) HOUSING MATERIAL: POLYESTER UL94-5VA

600VAC WAS 300VAC EC NO: ETC2005-0125 DRAWN BY: CK 2005/01/26 CHECKED BY: RDEROSS 2005/01/26 APPROVED BY: RDEROSS 2005/01/26	QUALITY SYMBOLS ▽=0 ▽=0	GENERAL TOLERANCES (UNLESS SPECIFIED)		DIMENSION STYLE IN/MM		SCALE 1:1	DESIGN UNITS INCH	THIRD ANGLE PROJECTION
		4 PLACES ± .--- ± .--- 3 PLACES ± .--- ± .005 2 PLACES ± 0.13 ± .01 1 PLACE ± 0.3 ± .--- ANGULAR ± 1/2°	mm INCH	DRAWN BY: DYOUNG CHECKED BY: RDEROSS APPROVED BY: RDEROSS	DATE: 00/01/18 DATE: 00/01/18 DATE: 00/01/18	FILE: CUSTOMER DRAWING SC PANEL MOUNT CONNECT 14-12 AWG	MOLEX INCORPORATED	SHEET NO. 1 OF 1
DRAFT WHERE APPLICABLE MUST REMAIN WITHIN DIMENSIONS	SEE CHART	MATERIAL NO. SD-19403-117	DOCUMENT NO. SD-19403-117	THIS DRAWING CONTAINS INFORMATION THAT IS PROPRIETARY TO MOLEX INCORPORATED AND SHOULD NOT BE USED WITHOUT WRITTEN PERMISSION				