

Excellent Integrated System Limited

Stocking Distributor

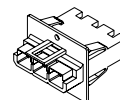
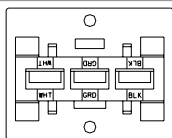
Click to view price, real time Inventory, Delivery & Lifecycle Information:

[Molex Connector Corporation](#)
[0194031230](#)

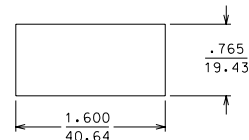
For any questions, you can email us directly:

sales@integrated-circuit.com

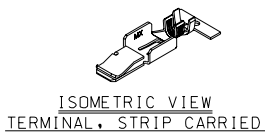
PART NUMBER	DESCRIPTION
194031230	SC HEADER HOUSING
194031240	TERMINAL, STRIP CARRIED
194031241	TERMINAL, LOOSE PIECE



ISOMETRIC VIEW
SC HEADER



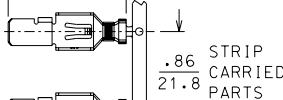
RECOMMENDED PANEL CUTOUT



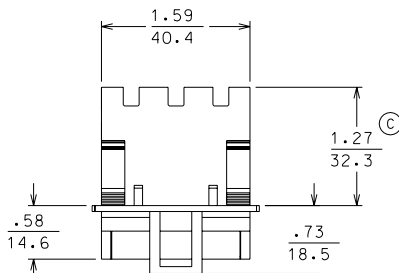
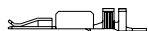
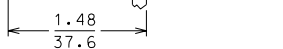
ISOMETRIC VIEW
TERMINAL, STRIP CARRIED



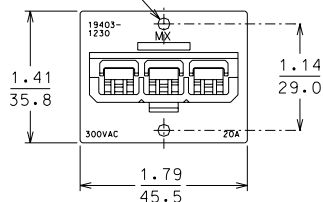
STRIP CARRIED & LOOSE PARTS



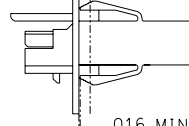
STRIP CARRIED PARTS



Ø .130 TYP 2 (FOR MTG USING 3.30 #4 SCREWS OR RIVETS)



.120 MAX PANEL 3.05 THICKNESS



.016 MIN PANEL 0.41 THICKNESS

NOTES:

- 1) TERMINAL MATERIAL: HIGH COPPER ALLOY
PLATING: TIN
- 2) HOUSING MATERIAL: POLYESTER UL94-5VA

EC NO. ETC2002-0085 DRWNG. PUPERT 01/18/09 CHK: JPAWLIC 01/18/09 APPR: R. DEROSS 01/18/09	QUALITY SYMBOLS MAJOR = ▽ CRITICAL = ∇	GENERAL TOLERANCES: (UNLESS SPECIFIED)	SCALE 1:1	DESIGN UNITS <input type="checkbox"/> mm <input checked="" type="checkbox"/> INCH	DIMENSIONS: <input type="checkbox"/> mm <input checked="" type="checkbox"/> INCH <input type="checkbox"/> mm ONLY	SHT 1	REV	
		4 PLACES ±0.--- ±.---	DRAWN BY & DATE DAY 00/06/12	TITLE: CUSTOMER DRAWING	THIRD ANGLE PROJECTION <input type="checkbox"/> mm <input checked="" type="checkbox"/> INCH	REVISE ON CAD ONLY		
		3 PLACES ±0.--- ±.005	CHECKED BY & DATE RWD 00/06/12	SC PANEL MOUNT CONNECTOR				
		2 PLACES ±0.13 ±.01	APPROVED BY & DATE RWD 00/06/12	10 AWG				
		1 PLACE ±0.3 ±.---	ANGULAR: ± 1/2 °	CAD FILENAME 19403128.DGN	MATERIAL NO. SEE CHART	DRAWING NO. SD-19403-128	SHEET NO. 1 OF 1	
		DRAFT WHERE APPLICABLE MUST REMAIN WITHIN DIMENSIONS		THIS DRAWING CONTAINS INFORMATION THAT IS PROPRIETARY TO MOLEX INCORPORATED AND SHOULD NOT BE USED WITHOUT WRITTEN PERMISSION.				