

Excellent Integrated System Limited

Stocking Distributor

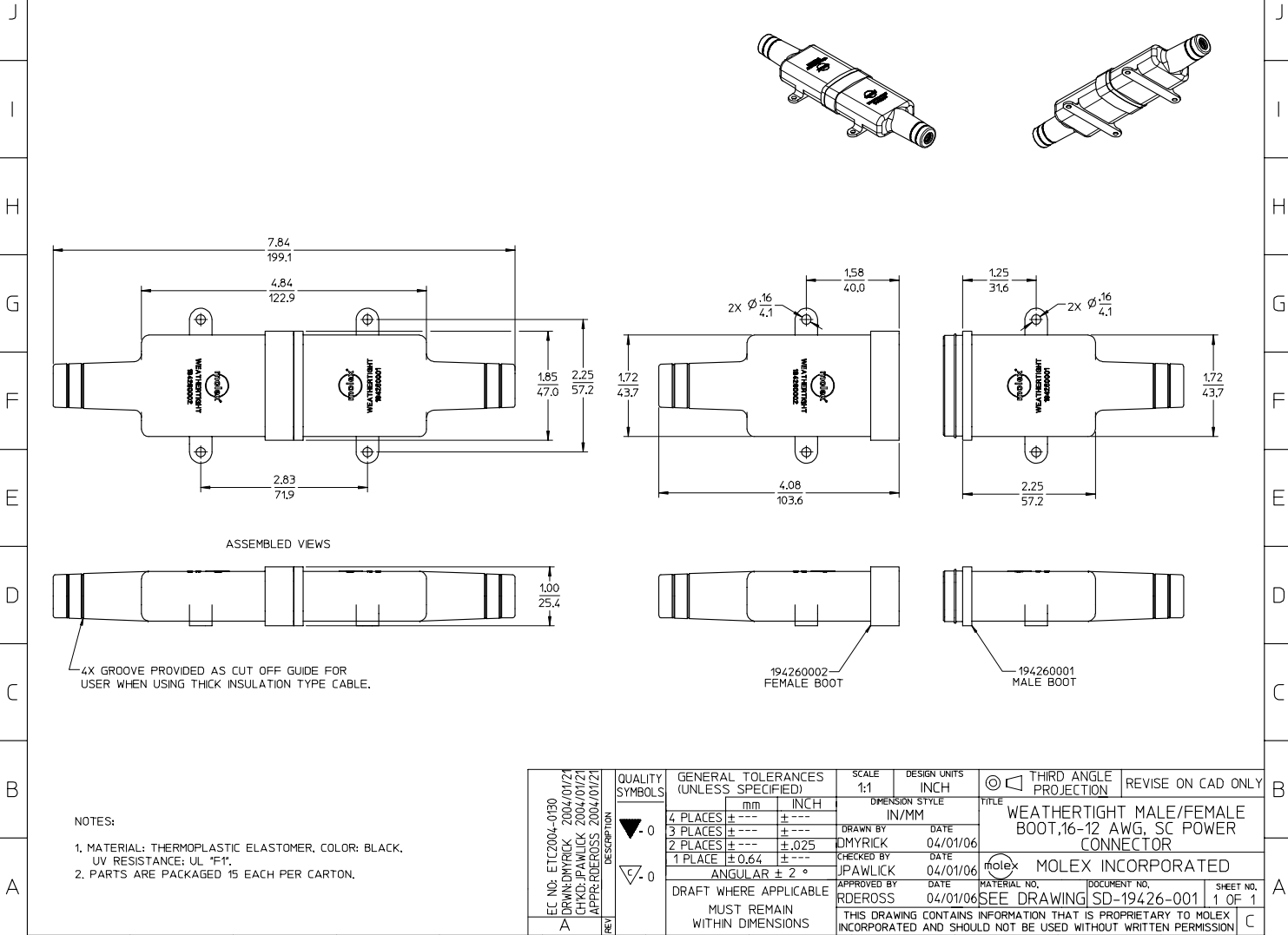
Click to view price, real time Inventory, Delivery & Lifecycle Information:

[Molex Connector Corporation](#)
[0194260001](#)

For any questions, you can email us directly:

sales@integrated-circuit.com

12 11 10 9 8 7 6 5 4 3 2 19426



NOTES:

1. MATERIAL: THERMOPLASTIC ELASTOMER, COLOR: BLACK, UV RESISTANCE: UL "F".
2. PARTS ARE PACKAGED 15 EACH PER CARTON.

EC NO. ETC2004-0190 DRW: DMYRICK 2004/01/24 CHKD: JPAWLICK 2004/01/24 APPR: RDEROSS 2004/01/24	QUALITY SYMBOLS ▽-0 ▽-0	GENERAL TOLERANCES (UNLESS SPECIFIED)		SCALE 1:1	DESIGN UNITS INCH	THIRD ANGLE PROJECTION	REVISE ON CAD ONLY
		DIMENSION STYLE IN/MM	TITLE WEATHERTIGHT MALE/FEMALE BOOT, 16-12 AWG, SC POWER CONNECTOR		MOLEX INCORPORATED		
		4 PLACES ± --- ± --- 3 PLACES ± --- ± --- 2 PLACES ± --- ± .025 1 PLACE ± 0.64 ± ---	DRAWN BY DMYRICK CHECKED BY JPAWLICK APPROVED BY RDEROSS	DATE 04/01/06 DATE 04/01/06 DATE 04/01/06	MATERIAL NO. SEE DRAWING DOCUMENT NO. SD-19426-001	SHEET NO. 1 OF 1	
		DRAFT WHERE APPLICABLE MUST REMAIN WITHIN DIMENSIONS		THIS DRAWING CONTAINS INFORMATION THAT IS PROPRIETARY TO MOLEX INCORPORATED AND SHOULD NOT BE USED WITHOUT WRITTEN PERMISSION			

11 10 9 8 7 6 5 4 3 2 1