

Excellent Integrated System Limited

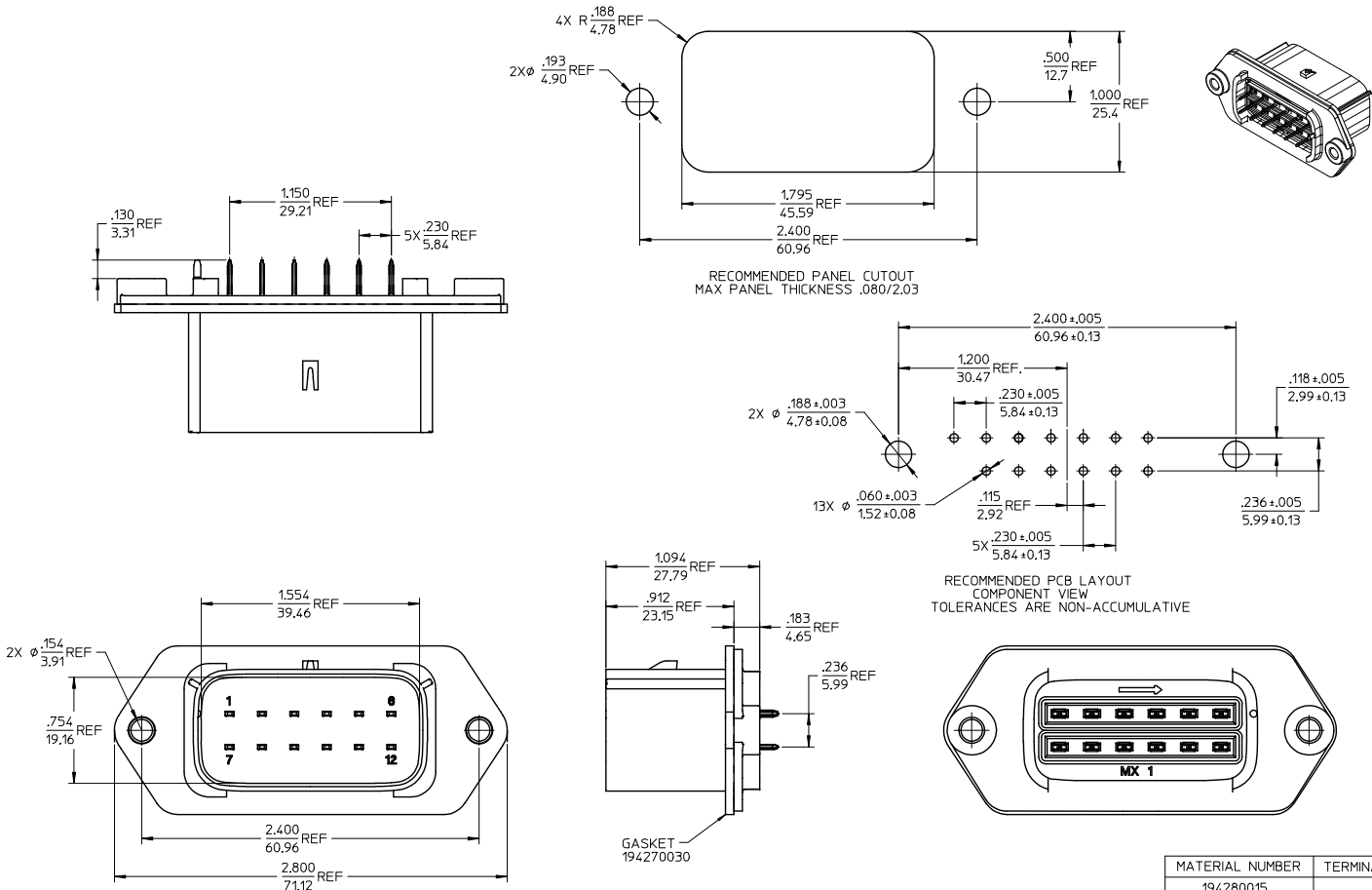
Stocking Distributor

Click to view price, real time Inventory, Delivery & Lifecycle Information:

[Molex Connector Corporation](#)
[0194280015](#)

For any questions, you can email us directly:

sales@integrated-circuit.com



- NOTES:
1. MATERIALS:
HOUSING: POLYESTER (PBT), GLASS FILLED, UL94 V-0,
COLOR: BLACK
TERMINALS: COPPER ALLOY
 2. FINISHES: 1. TIN ONLY: 100µN TIN OVER 50µN NICKEL
2. TIN/GOLD: 30µN SELECT GOLD (CONTACT MATING AREA),
100µN SELECT TIN (PCB TAIL AREA) OVER 50µN NICKEL OVERALL.
 3. PRODUCT SPECIFICATION: PS-19428-001.
 4. PACKAGING SPECIFICATION: PK-19428-002.
 5. MATES WITH: 19418 SERIES RECEPTACLE ASSEMBLIES.

PRODUCTION RELEASE EC NO: E1C22005-0213 DRAWN: JPW/LCK 2/05/06/11 CHKD: JAW/LCK 2/05/06/14 APPR: RDR/ROSS 2/05/06/14	QUALITY SYMBOLS ▽=0 ▽=0	GENERAL TOLERANCES (UNLESS SPECIFIED)	DIMENSION STYLE		SCALE 2:1	TITLE 12-WAY STRAIGHT HEADER ASSEMBLY, SHORT VERSION	MATERIAL NUMBER	TERMINAL PLATING
			mm	INCH			194280015	TIN
REV A	DESCRIPTION	DRAFT WHERE APPLICABLE MUST REMAIN WITHIN DIMENSIONS	DRAWN BY BRUPERT		DATE 04/06/16	MATERIAL NO. SEE CHART	194280031	SELECT GOLD/TIN
			CHECKED BY JPW/LCK				DATE 04/06/16	DESIGN UNITS INCH
		APPROVED BY RDR/ROSS		DATE 04/06/16	MOLEX INCORPORATED		DOCUMENT NO. SD-19428-007	SHEET NO. 1 OF 1
<p>THIS DRAWING CONTAINS INFORMATION THAT IS PROPRIETARY TO MOLEX INCORPORATED AND SHOULD NOT BE USED WITHOUT WRITTEN PERMISSION</p>								