

## Excellent Integrated System Limited

Stocking Distributor

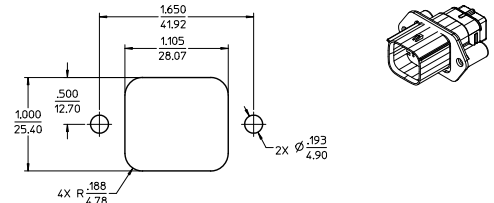
Click to view price, real time Inventory, Delivery & Lifecycle Information:

[Molex Connector Corporation](#)  
[0194350613](#)

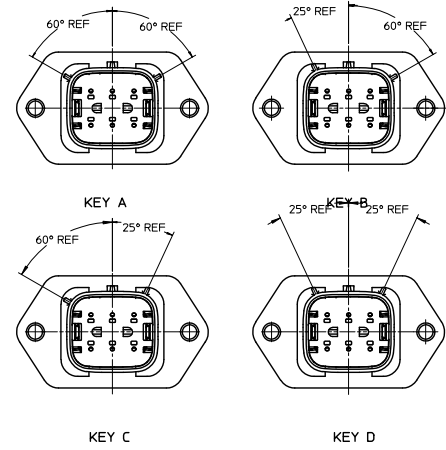
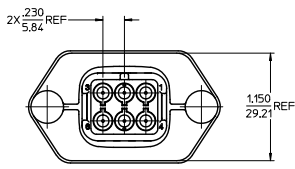
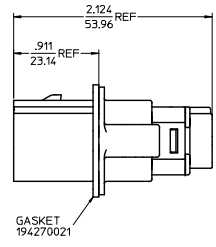
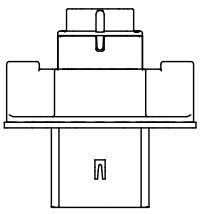
For any questions, you can email us directly:

[sales@integrated-circuit.com](mailto:sales@integrated-circuit.com)

MATERIAL NUMBER	WIRE GAGE	GASKET	KEYING OPTION	COLOR
194350611	16-14	YES	A	BLACK
194350612	22-18	YES	A	BLACK
194350613	16-14	NO	A	BLACK
194350614	22-18	NO	A	BLACK
194350616	16-14	YES	B	GRAY
194350617	22-18	YES	B	GRAY
194350618	16-14	NO	B	GRAY
194350619	22-18	NO	B	GRAY
194350621	16-14	YES	C	BROWN
194350622	22-18	YES	C	BROWN
194350623	16-14	NO	C	BROWN
194350624	22-18	NO	C	BROWN
194350626	16-14	YES	D	GREEN
194350627	22-18	YES	D	GREEN
194350628	16-14	NO	D	GREEN
194350629	22-18	NO	D	GREEN



RECOMMENDED PANEL MOUNT OPENING MAX PANEL THK .080/2.03



- NOTES:
- MATERIALS:  
HOUSING: POLYESTER (PBT), GLASS FILLED, UL94 V-0, COLOR: SEE CHART.  
SEAL: SILICONE RUBBER.  
GASKET: EPDM RUBBER.
  - PRODUCT SPECIFICATION: PS-19417-001.
  - PACKAGING SPECIFICATION: PK-19435-001.  
GASKETS, IF REQUIRED FOR THE ASSEMBLIES, ARE BULK PACKAGED IN A SEPARATE BAG.
  - MATES WITH: 19418 SERIES RECEPTACLE ASSEMBLIES.
  - USE CONNECTOR WITH MALE CRIMP TERMINAL: SERIES 19417.
  - RECOMMENDED MOUNTING HARDWARE: (2#10 X .62/15.8 LONG PLASTIC THREAD CUTTING SCREWS, RECOMMENDED TORQUE 15-17 IN-LBS, SUGGESTED SOURCE: ITW SHAKESPROOF INDUSTRIAL BOSSCREW OR EQUIVALENT.

<b>UPDATE NOTES</b> EC NO: 194350613 DRAWING NO: 2011/07/28 CHKD: [blank] APPR: [blank] DATE: 2012/02/28	<b>QUALITY SYMBOLS</b> ▽=0 ▽=0	<b>GENERAL TOLERANCES (UNLESS SPECIFIED)</b> 4 PLACES ± .015 INCH 3 PLACES ± .015 INCH 2 PLACES ± 0.38 INCH 1 PLACE ± .015 INCH ANGULAR ± 2 °	<b>DIMENSION STYLE</b> IN/MM	<b>SCALE</b> 2:1	<b>DESIGN UNITS</b> INCH	<b>THIRD ANGLE PROJECTION</b>	
	<b>DRAWN BY</b> JPAL/LCKI	<b>DATE</b> 02/09/05	<b>TITLE</b> 6 WAY SEALED PLUG PANEL MOUNT ASSEMBLY, 22-14 AWG, "A-D" POLARIZATION				
	<b>CHECKED BY</b> JPAL/LCKI	<b>DATE</b> 02/10/05					
	<b>APPROVED BY</b> RDEROSS	<b>DATE</b> 02/11/05					
<b>DRAFT WHERE APPLICABLE MUST REMAIN WITHIN DIMENSIONS</b>		<b>MATERIAL NO</b> SEE CHART	<b>DOCUMENT NO</b> SD-19435-006	<b>SHEET NO</b> 1 OF 1			
THIS DRAWING CONTAINS INFORMATION THAT IS PROPRIETARY TO MOLEX INCORPORATED AND SHOULD NOT BE USED WITHOUT WRITTEN PERMISSION							