

Excellent Integrated System Limited

Stocking Distributor

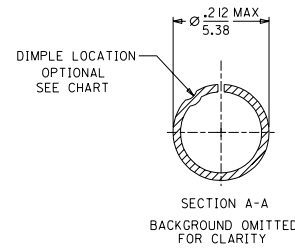
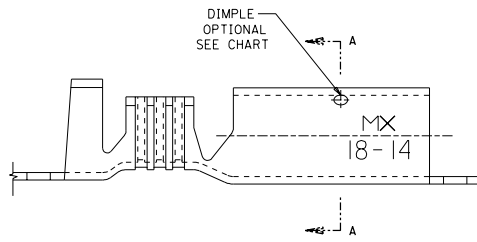
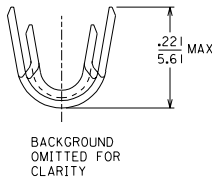
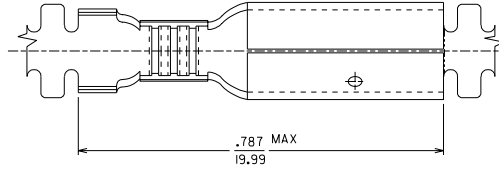
Click to view price, real time Inventory, Delivery & Lifecycle Information:

[Molex Connector Corporation](#)
[0197234400](#)

For any questions, you can email us directly:

sales@integrated-circuit.com

| MATERIAL NO. | ENG NUMBER | DESCRIPTION | FINISH |
|--------------|------------|---------------------------------|-------------|
| I97234400 | I9723-4400 | CONTINUOUS STRIP WITH DIMPLE | UNPLATED |
| I97234401 | I9723-4401 | CONTINUOUS STRIP WITHOUT DIMPLE | |
| I97234402 | I9723-4402 | CONTINUOUS STRIP WITH DIMPLE | ELECTRO-TIN |
| I97234403 | I9723-4403 | CONTINUOUS STRIP WITHOUT DIMPLE | |



SALES DRAWING

- NOTES:
- MATERIAL: BRASS
 - FINISH: SEE CHART
 - PACKING QTY. 6000 PER REEL.

| | | | | | | | | |
|---|--|---|--|--|--|------------------------|--|--|
| NEW RELEASE EC NO. ETC2002-0318 DRW:HEB 02/08/09 CHK:RWD 02/08/09 APPR:RWD 02/08/09 REV DESCRIPTION A | QUALITY SYMBOLS MAJOR ∇ = 0 CRITICAL ∇ / C = 0 | GENERAL TOLERANCES: (UNLESS SPECIFIED) | | SCALE 5:1 | DESIGN UNITS <input type="checkbox"/> mm <input checked="" type="checkbox"/> INCH | THIRD ANGLE PROJECTION | DIMENSIONS: <input type="checkbox"/> mm <input checked="" type="checkbox"/> INCH <input type="checkbox"/> mm ONLY | SHT 1 REV |
| | | 4 PLACES ± 0.1 mm $\pm .005$ INCH 3 PLACES ± 0.2 mm $\pm .008$ INCH 2 PLACES ± 0.3 mm $\pm .012$ INCH 1 PLACE ± 0.5 mm $\pm .020$ INCH | DRAWN BY & DATE BRE 02/06/28 CHECKED BY & DATE HEB 02/06/28 APPROVED BY & DATE RWD 02/06/28 | TITLE: SNAP PLUG RECEPTACLE .180 DIA. VIBRAKRIMP 18-14 AWG CHAIN STAMPED | | MOLEX INCORPORATED | MATERIAL NO. SD-19723-440 DRAWING NO. SD-19723-440 SHEET NO. 1 OF 1 | THIS DRAWING CONTAINS INFORMATION THAT IS PROPRIETARY TO MOLEX INCORPORATED AND SHOULD NOT BE USED WITHOUT WRITTEN PERMISSION. |