

Excellent Integrated System Limited

Stocking Distributor

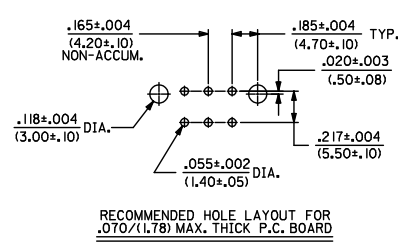
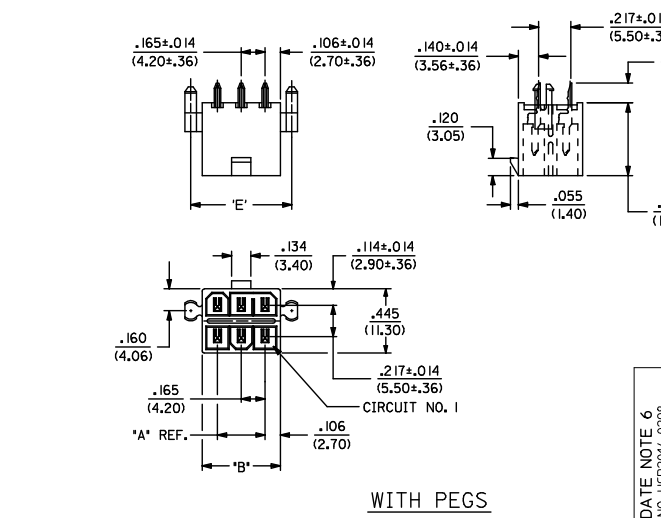
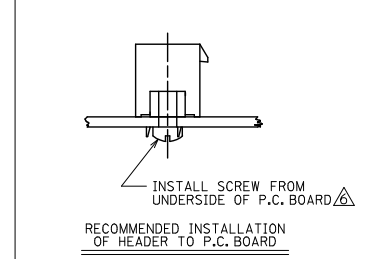
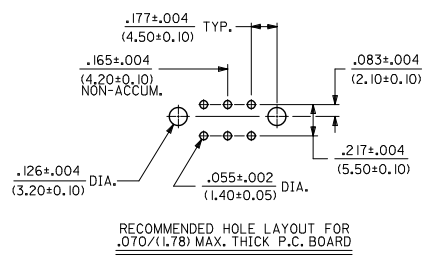
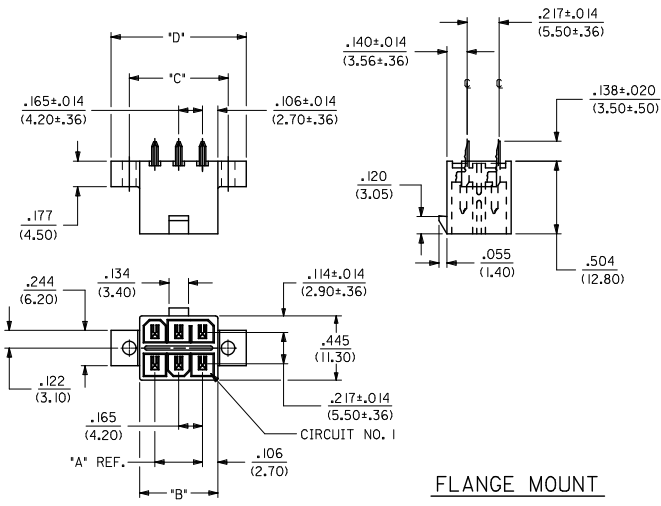
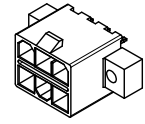
Click to view price, real time Inventory, Delivery & Lifecycle Information:

[Molex Connector Corporation](#)
[0300690411](#)

For any questions, you can email us directly:
sales@integrated-circuit.com

NOTES:

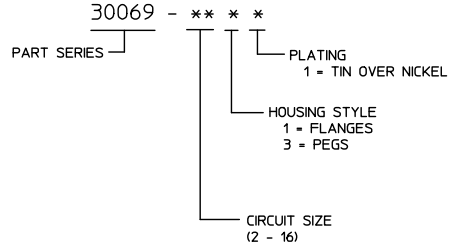
- HOUSING MAT'L: POLYESTER, UNFILLED, 94V-0. COLOR: BLACK. TERMINAL MATERIAL: BRASS ALLOY
- PLATINGS: .000100/.00254 MIN. BRIGHT TIN OVER .000050/.00124 MIN. NICKEL.
- PRODUCT SPECIFICATION: SEE PS-5556-003
- PACKAGING SPECIFICATION: PK-30069-001
- PART MATES WITH RECEPTACLE 30067-*.
 ⚠️ PART IS DESIGNED FOR USE WITH #4 OR M3 SELF TAPPING SCREWS.
- PART CONFORMS TO CLASS 'B' REQUIREMENTS OF COSMETIC SPECIFICATION PS-45499-002.



UPDATE NOTE 6 EC NO: UCP2014-0298 DRAWN BY: 2013/08/05 CHKD: BELL 2013/08/05 APPR: SMITH 2013/08/05	QUALITY SYMBOLS ∇=0 ∇=0 ∇=0	GENERAL TOLERANCES (UNLESS SPECIFIED)		DIMENSION STYLE		SCALE	DESIGN UNITS	THIRD ANGLE PROJECTION		
				IN/MM		2:1	INCH			
		4 PLACES	±---	±---	DRAWN BY	DATE	TITLE			
		3 PLACES	±---	±.010	TGREGOR I	2005/12/27	MINI-FIT T.P.A. VERTICAL HEADER ASSY (100U" TIN OVER 50U" NI)			
2 PLACES	±0.25	±.014	JCOMERC I	DATE						
1 PLACE	±0.36	±---	JCOMERC I	2010/07/27						
0 PLACE	±	±	APPROVED BY		MATERIAL NO.	DOCUMENT NO.	SHEET NO.			
ANGULAR ±1/2°			DATE		SEE SHEET 2	SD-30069-001	1 OF 2			
DRAFT WHERE APPLICABLE MUST REMAIN WITHIN DIMENSIONS			THIS DRAWING CONTAINS INFORMATION THAT IS PROPRIETARY TO MOLEX INCORPORATED AND SHOULD NOT BE USED WITHOUT WRITTEN PERMISSION							

CIRCUIT SIZE	HOUSING STYLE	ASSEMBLY PART NUMBER	DIM. 'A'	DIM. 'B'	DIM. 'C'	DIM. 'D'	DIM. 'E'
2	FLANGES	30069-0211	---	.213 (5.40)	.354 (9.00)	.606 (15.40)	.370 (9.40)
	PEGS	30069-0231					
4	FLANGES	30069-0411	.165 (4.20)	.378 (9.60)	.520 (13.20)	.772 (19.60)	.535 (13.60)
	PEGS	30069-0431					
6	FLANGES	30069-0611	.331 (8.40)	.543 (13.80)	.685 (17.40)	.937 (23.80)	.701 (17.80)
	PEGS	30069-0631					
8	FLANGES	30069-0811	.496 (12.60)	.709 (18.00)	.850 (21.60)	1.102 (28.00)	.866 (22.00)
	PEGS	30069-0831					
10	FLANGES	30069-1011	.661 (16.80)	.874 (22.20)	1.016 (25.80)	1.268 (32.20)	1.031 (26.20)
	PEGS	30069-1031					
12	FLANGES	30069-1211	.827 (21.00)	1.039 (26.40)	1.181 (30.00)	1.433 (36.40)	1.197 (30.40)
	PEGS	30069-1231					
16	FLANGES	30069-1611	1.157 (29.40)	1.370 (34.80)	1.512 (38.40)	1.764 (44.80)	1.527 (38.80)
	PEGS	30069-1631					

FINISHED PART LEGEND



SEE SHEET 1 EC NO: UCP2014-0298 2013/08/05 DRAWING BY: DRWINNUNEN 2013/08/05 CHKD: BELL 2013/08/05 APPR: SMITH 2013/08/16	QUALITY SYMBOLS ∇=0 ∇=0 ∇=0	GENERAL TOLERANCES (UNLESS SPECIFIED)		DIMENSION STYLE IN/MM		SCALE 1:1	DESIGN UNITS INCH	THIRD ANGLE PROJECTION
		4 PLACES ± --- ± ---	DRAWN BY T GREGOR I DATE 2005/12/27	MINI-FIT T.P.A. VERTICAL HEADER ASSY (100U" TIN OVER 50U" NI) 				
		3 PLACES ± --- ± .010	CHECKED BY JCOMERC I DATE					
		2 PLACES ± 0.25 ± .014	APPROVED BY JCOMERC I DATE 2010/07/27					
1 PLACE ± 0.36 ± ---	MATERIAL NO.							
0 PLACE ± ±	ANGULAR ± 1/2°	SEE CHART	DOCUMENT NO. SD-30069-001	SHEET NO. 2 OF 2				
DRAFT WHERE APPLICABLE MUST REMAIN WITHIN DIMENSIONS		THIS DRAWING CONTAINS INFORMATION THAT IS PROPRIETARY TO MOLEX INCORPORATED AND SHOULD NOT BE USED WITHOUT WRITTEN PERMISSION						