

## Excellent Integrated System Limited

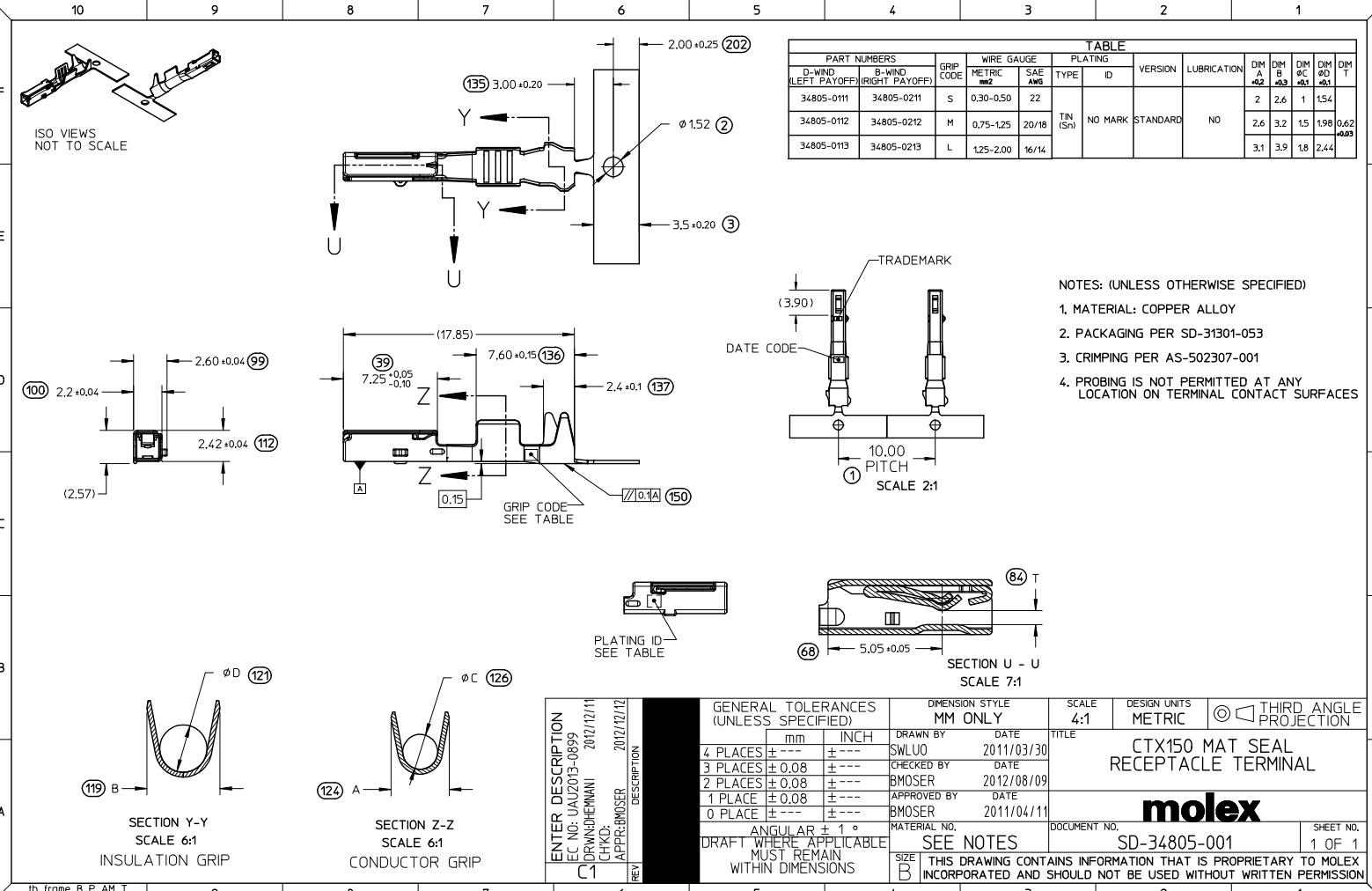
Stocking Distributor

Click to view price, real time Inventory, Delivery & Lifecycle Information:

[Molex Connector Corporation](#)  
[0348050211](#)

For any questions, you can email us directly:

[sales@integrated-circuit.com](mailto:sales@integrated-circuit.com)



PART NUMBERS		GRIP CODE	WIRE GAUGE		PLATING		VERSION	LUBRICATION	DIM A	DIM B	DIM ØC	DIM ØD	DIM T
D-WIND (LEFT PAYOFF)	B-WIND (RIGHT PAYOFF)		METRIC	SAE AWG	TYPE	ID							
34805-0111	34805-0211	S	0.30-0.50	22	TIN (Sn)	NO MARK	STANDARD	NO	2	2.6	1	1.54	
34805-0112	34805-0212	M	0.75-1.25	20/18					2.6	3.2	1.5	1.98	0.62
34805-0113	34805-0213	L	1.25-2.00	16/14					3.1	3.9	1.8	2.44	0.03

- NOTES: (UNLESS OTHERWISE SPECIFIED)
1. MATERIAL: COPPER ALLOY
  2. PACKAGING PER SD-31301-053
  3. CRIMPING PER AS-502307-001
  4. PROBING IS NOT PERMITTED AT ANY LOCATION ON TERMINAL CONTACT SURFACES

ENTER DESCRIPTION E.C. NO.: UAU2013-0899 DR: WINDHEMANNI 2012/12/11 CHKD: APPR: BMOSEK 2012/12/12 REV: C1	GENERAL TOLERANCES (UNLESS SPECIFIED)		DIMENSION STYLE MM ONLY		SCALE 4:1	DESIGN UNITS METRIC	THIRD ANGLE PROJECTION
	4 PLACES	± 0.08	± 0.08	DRAWN BY SWLUO	DATE 2011/03/30	TITLE CTX150 MAT SEAL RECEPTACLE TERMINAL	
	3 PLACES	± 0.08	± 0.08	CHECKED BY BMOSEK	DATE 2012/08/09		
	2 PLACES	± 0.08	± 0.08	APPROVED BY BMOSEK	DATE 2011/04/11		
1 PLACE	± 0.08	± 0.08	MATERIAL NO. SEE NOTES		DOCUMENT NO. SD-34805-001	SHEET NO. 1 OF 1	
0 PLACE	± 0.08	± 0.08	ANGULAR ± 1 ° DRAFT WHERE APPLICABLE MUST REMAIN WITHIN DIMENSIONS		THIS DRAWING CONTAINS INFORMATION THAT IS PROPRIETARY TO MOLEX INCORPORATED AND SHOULD NOT BE USED WITHOUT WRITTEN PERMISSION		

1b\_frame\_B\_P\_AM\_T Rev. G 2012/01/11