

## Excellent Integrated System Limited

Stocking Distributor

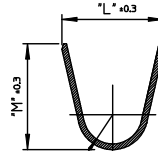
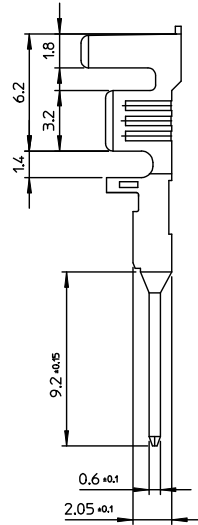
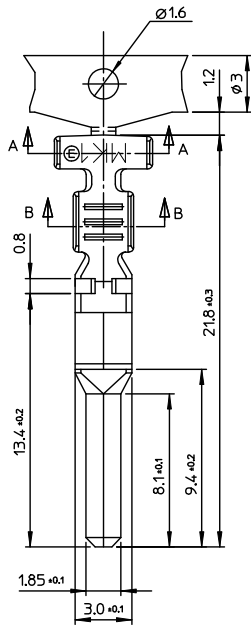
Click to view price, real time Inventory, Delivery & Lifecycle Information:

[Molex Connector Corporation](#)  
[0350409802](#)

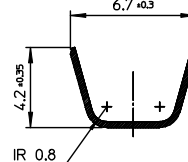
For any questions, you can email us directly:

[sales@integrated-circuit.com](mailto:sales@integrated-circuit.com)

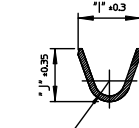
10 9 8 7 6 5 4 3 2 1



SECTION A-A



SECTION A-A  
(35040-9502)



SECTION B-B

NOTES.

1. MATERIAL : BRASS
2. FINISH : PRE-TIN PLATED  
0.8~1.84μm.TIN(Sn) OVER  
0.3~0.84μm. COPPER(Cu) OVERALL
3. PRODUCT SPECIFICATION : PS-35127-001
4. PACKAGING SPECIFICATION : PK-35040-001
5. MATES WITH
  - MALE HOUSING : 35127-\*\*00
  - FEMALE TERMINAL : 35028 SERIES



[TABLE]

H	I	J	K	L	M	MATERIAL NO.	ENG NO.	APPLICABLE WIRE RANGE
0.8	3.0	3.2	0.8	3.35	3.55	350409802	35040-9802	AWG #20~#18[SINGLE WIRE]
0.8	3.2	3.5	1.55	5.4	5.3	350409000	35040-9000	AWG #16~#14[SINGLE WIRE]
0.8	4.3	3.2				350409502	35040-9502	AWG #20~#18[DOUBLE WIRES]

REVISED EC. NO: KOF2014-0036 DRAWN:SKCHO 2013/08/26 CHKD: APPR:YSK/INOZ 2013/10/02 REV 1	QUALITY SYMBOLS	GENERAL TOLERANCES (UNLESS SPECIFIED)	DIMENSION STYLE	SCALE	DESIGN UNITS	THIRD ANGLE PROJECTION
	▽=0 ▽=0	mm INCH 4 PLACES ± --- ± --- 3 PLACES ± --- ± --- 2 PLACES ±0.2 ± --- 1 PLACE ±0.3 ± --- ANGULAR ± 1°	MM ONLY		METRIC	
		DRAFT WHERE APPLICABLE MUST REMAIN WITHIN DIMENSIONS	DRAWN BY DATE Y.J.KIM 1992/08/29 CHECKED BY DATE BK. CHOI 1992/08/29 APPROVED BY DATE C.W.LEE 1992/08/29	TITLE		.070 MALE TERMINAL
			MATERIAL NO. SEE TABLE SIZE A 3	MOLEX INCORPORATED DOCUMENT NO. SD-35040-001 SHEET NO. 1 OF 01		

9 8 7 6 5 4 3 2 1