

Excellent Integrated System Limited

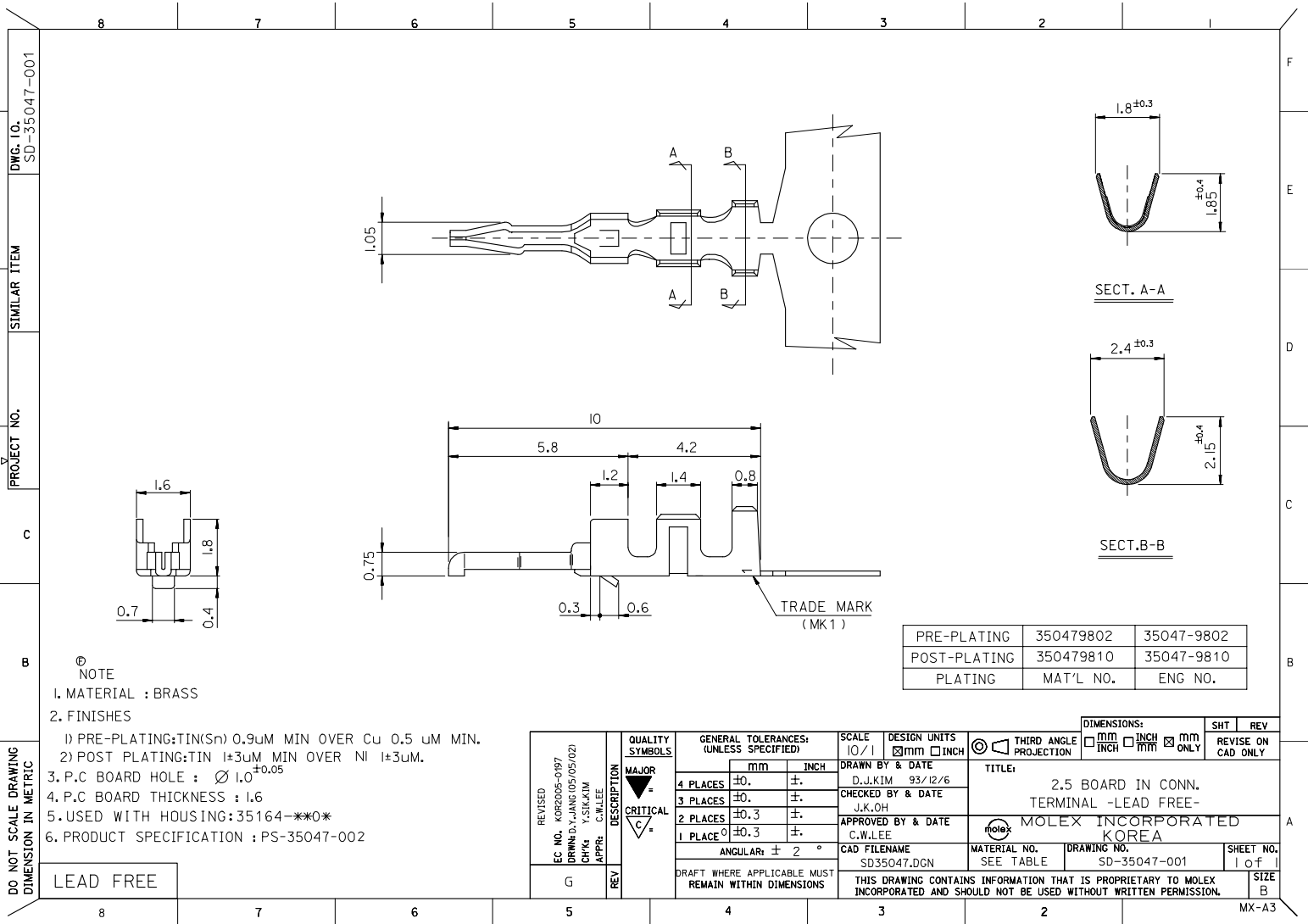
Stocking Distributor

Click to view price, real time Inventory, Delivery & Lifecycle Information:

[Molex Connector Corporation](#)
[0350479802](#)

For any questions, you can email us directly:

sales@integrated-circuit.com



PRE-PLATING	350479802	35047-9802
POST-PLATING	350479810	35047-9810
PLATING	MAT'L NO.	ENG NO.

- NOTE
- MATERIAL : BRASS
 - FINISHES

- PRE-PLATING: TIN(Sn) 0.9µM MIN OVER Cu 0.5 µM MIN.
- POST PLATING: TIN 1±3µM MIN OVER NI 1±3µM.
- P.C BOARD HOLE : $\varnothing 1.0 \pm 0.05$
- P.C BOARD THICKNESS : 1.6
- USED WITH HOUSING : 35164-**0*
- PRODUCT SPECIFICATION : PS-35047-002

LEAD FREE

REVISED EC NO. K02005-0197 DRAWN BY JANG (05/05/02) CHK'G Y.SIK.KIM APPR. C.W.LEE	QUALITY SYMBOLS MAJOR CRITICAL	GENERAL TOLERANCES: (UNLESS SPECIFIED)		SCALE 10/1	DESIGN UNITS	THIRD ANGLE PROJECTION	DIMENSIONS:		SHT	REV
		mm	INCH	<input checked="" type="checkbox"/> mm <input type="checkbox"/> INCH	<input type="checkbox"/> mm <input type="checkbox"/> INCH		<input checked="" type="checkbox"/> mm ONLY	REVISE ON CAD ONLY		
G	DESCRIPTION	4 PLACES	±0.	±.	DRAWN BY & DATE D.J.KIM 93/12/6	TITLE: 2.5 BOARD IN CONN. TERMINAL -LEAD FREE-	MOLEX INCORPORATED KOREA		SHEET NO.	SIZE
		3 PLACES	±0.	±.	CHECKED BY & DATE J.K.OH		MATERIAL NO. SEE TABLE	DRAWING NO. SD-35047-001	1 of 1	B
1 PLACE \varnothing ±0.3 ±.		ANGULAR: ± 2°		APPROVED BY & DATE C.W.LEE	THIS DRAWING CONTAINS INFORMATION THAT IS PROPRIETARY TO MOLEX INCORPORATED AND SHOULD NOT BE USED WITHOUT WRITTEN PERMISSION.					
DRAFT WHERE APPLICABLE MUST REMAIN WITHIN DIMENSIONS		MX-A3								

DO NOT SCALE DRAWING
DIMENSION IN METRIC