



Distributor of Molex Connector Corporation: Excellent Integrated System Limited
Datasheet of 0350979812 - Connector Quick Connect Receptacle 16-20 AWG 0.110"
(2.79mm) Crimp

Contact us: sales@integrated-circuit.com Website: www.integrated-circuit.com

Excellent Integrated System Limited

Stocking Distributor

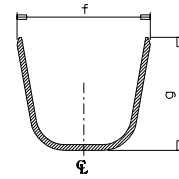
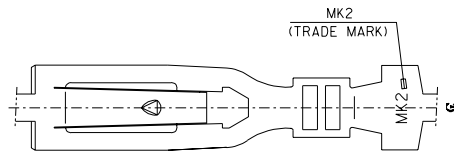
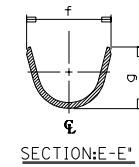
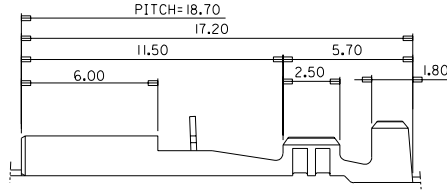
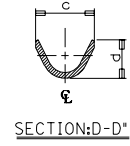
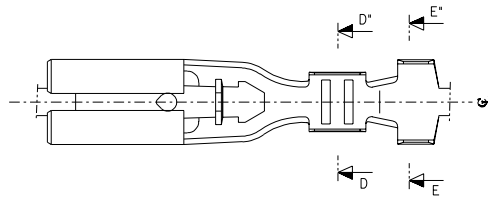
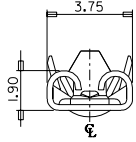
Click to view price, real time Inventory, Delivery & Lifecycle Information:

[Molex Connector Corporation](#)
[0350979812](#)

For any questions, you can email us directly:
sales@integrated-circuit.com

Contact us: sales@integrated-circuit.com Website: www.integrated-circuit.com

DWG. NO. SIMILAR ITEM PROJECT NO. C B DO NOT SCALE DRAWING DIMENSION IN METRIC



SECTION:E-E'
35097-9902

- NOTES
- MATERIAL: TIN-PLATED BRASS 0.25mm THICK
 - FINISH: PRE-TIN PLATING
 - MATING TAB: 0.5(t) x 2.8(w)

ENG.NO.	c	d	f	g	WIRE RANGE
35097-9712	2.0	1.85	3.3	3.0	AWG #26-#20
35097-9812	2.8	2.75	4.0	4.1	AWG #20-#16
35097-9912	2.8	2.75	5.9	5.0	AWG #20x2

REVISED EC NO. KOR2000-0090 DRAWN: W.Y.YANG 00/11/08 CHK: CH/K APPR:	QUALITY SYMBOLS MAJOR $\nabla = 0$ CRITICAL $\nabla = 0$	GENERAL TOLERANCES: (UNLESS SPECIFIED) mm INCH		SCALE 6:1	DESIGN UNITS <input checked="" type="checkbox"/> mm <input type="checkbox"/> INCH	THIRD ANGLE PROJECTION <input checked="" type="checkbox"/> THIRD ANGLE PROJECTION	DIMENSIONS: <input type="checkbox"/> mm <input type="checkbox"/> INCH <input checked="" type="checkbox"/> mm ONLY		SHT REVISE ON CAD ONLY	REV		
		4 PLACES ± 0.1 \pm		DRAWN BY & DATE W.Y.YANG 98/02/17		TITLE: .110 MP-LOCK RECEPTACLE TERMINAL		MOLEX INCORPORATED KOREA		SHEET NO. 10F1		
		3 PLACES ± 0.1 \pm		CHECKED BY & DATE B.K.CHOI 98/02/17		APPROVED BY & DATE C.W.LEE 98/02/17		MATERIAL NO. SEE TABLE		DRAWING NO. SD 35097-9*12		SIZE B
		2 PLACES ± 0.30 \pm		CAD FILENAME S0979712.DGN		THIS DRAWING CONTAINS INFORMATION THAT IS PROPRIETARY TO MOLEX INCORPORATED AND SHOULD NOT BE USED WITHOUT WRITTEN PERMISSION.		MOLEX		MX-A3		
1 PLACE ± 0.30 \pm		ANGULAR: $\pm 5.0^\circ$		DRAFT WHERE APPLICABLE MUST REMAIN WITHIN DIMENSIONS		MOLEX		SHEET NO. 10F1		SIZE B		