

Excellent Integrated System Limited

Stocking Distributor

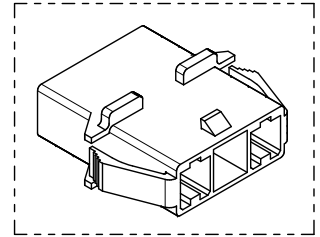
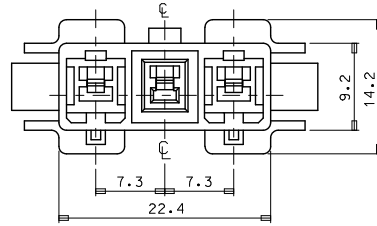
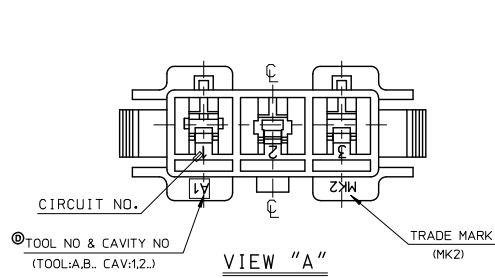
Click to view price, real time Inventory, Delivery & Lifecycle Information:

[Molex Connector Corporation](#)
[0351500314](#)

For any questions, you can email us directly:

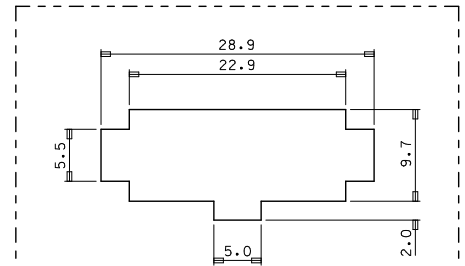
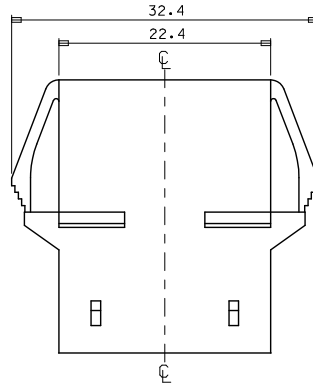
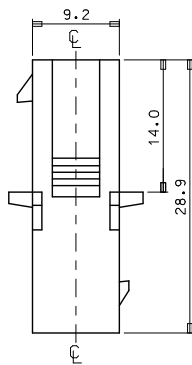
sales@integrated-circuit.com

10 9 8 7 6 5 4 3 2 1



NOTES.

1. MATERIAL & COLOR : SEE TABLE
2. MATED HOUSING : 35151-031*
3. APPLICABLE TERMINAL : 35745-0*10 (1 CIRCUIT)
35746-0*10 (2 CIRCUIT)
35747-0*10 (3 CIRCUIT)
4. APPLICABLE T.P.A : 35150-039*
5. PRODUCT SPECIFICATION : PS-35150-003



PANEL HOLE DIMENSION

◎ THICKNESS : 1.0~1.8

NO	PRODUCT		MATERIAL
	PART NO	COLOR	DESCRIPTION
1	35150-0310	NATURAL	POLYESTER (PBT) (UL94V-0)
2	35150-0314	BLUE	
3	35150-0319	NATURAL	PC/PET (UL94V-0)
4	35150-2319	RED	
5	35150-3319	YELLOW	
6	35150-4319	BLUE	

REVISED
EC NO: KOR2010-0092
DRAWN: HPRK01
CHKD: W. YANG
APPR: JUNGSKIM

2010/01/14
2010/07/14
2010/07/14

QUALITY SYMBOLS	GENERAL TOLERANCES (UNLESS SPECIFIED)	
	mm	INCH
▽=0	4 PLACES ±---	±---
▽=0	3 PLACES ±---	±---
	2 PLACES ±---	±---
	1 PLACE ±0.3	±---
	ANGULAR ± 1°	

DIMENSION STYLE		SCALE	DESIGN UNITS	THIRD ANGLE PROJECTION
MM ONLY		1:1	METRIC	<input checked="" type="checkbox"/>
DRAWN BY	DATE	TITLE	7.3 PITCH W/W CONN MALE HSG-3P(W/EAR)	
JS.KANG				
CHECKED BY	DATE			
APPROVED BY	DATE	Molex MOLEX INCORPORATED		

MATERIAL NO.	DOCUMENT NO.	SHEET NO.
SEE TABLE	SD-35150-031*	1 OF 01

DRAFT WHERE APPLICABLE
MUST REMAIN
WITHIN DIMENSIONS

THIS DRAWING CONTAINS INFORMATION THAT IS PROPRIETARY TO MOLEX INCORPORATED AND SHOULD NOT BE USED WITHOUT WRITTEN PERMISSION

9 8 7 6 5 4 3 2 1