

Excellent Integrated System Limited

Stocking Distributor

Click to view price, real time Inventory, Delivery & Lifecycle Information:

[Molex Connector Corporation](#)
[0351550302](#)

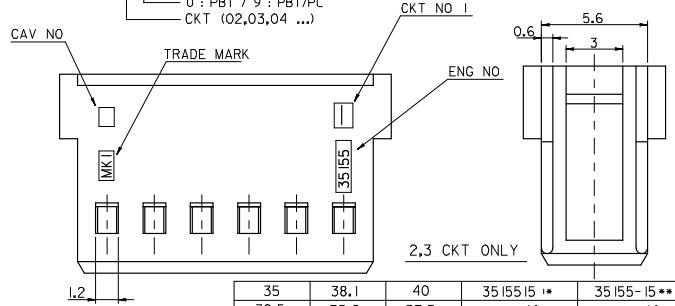
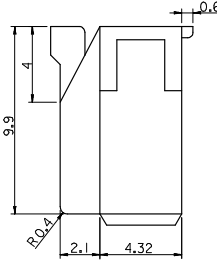
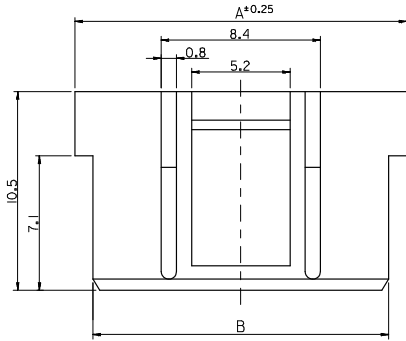
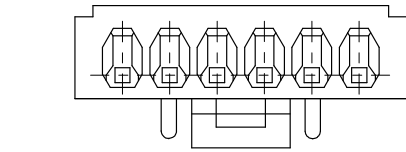
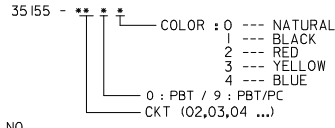
For any questions, you can email us directly:

sales@integrated-circuit.com

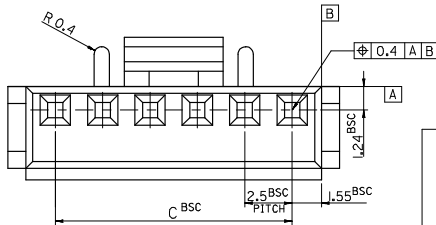
NOTE

1. MATERIAL : SEE TABLE
2. USED WITH TERMINAL : 5103-*
3. MATED WITH WAFER ASS'Y : 35312-***

LEGEND



35	38.1	40	3515515 **	35155-15 **	15
32.5	35.6	37.5	14 **	-14 **	14
30	33.1	35	13 **	-13 **	13
27.5	30.6	32.5	12 **	-12 **	12
25	28.1	30	11 **	-11 **	11
22.5	25.6	27.5	10 **	-10 **	10
20	23.1	25	09 **	-09 **	9
17.5	20.6	22.5	08 **	-08 **	8
15	18.1	20	07 **	-07 **	7
12.5	15.6	17.5	06 **	-06 **	6
10	13.1	15	05 **	-05 **	5
7.5	10.6	12.5	04 **	-04 **	4
5	8.1	10	03 **	-03 **	3
2.5	5.6	7.5	3515502 **	35155-020 **	2
C	B	A	MATERIAL NO.	ENG NO.	CKT.



REVISED EC NO: KOR2008-0103 DRWNS/KHANO1 2007/12/13 CHKD/WY YANG 2007/12/13 APPR: TUNSTKK/IN 2007/12/13	QUALITY SYMBOLS	GENERAL TOLERANCES (UNLESS SPECIFIED)	DIMENSION STYLE IN/MM	SCALE 5:1	DESIGN UNITS METRIC	THIRD ANGLE PROJECTION	
	▽=0 ▽=0	4 PLACES ± --- ± --- 3 PLACES ± --- ± --- 2 PLACES ± --- ± --- 1 PLACE ± 0.1 ± --- ANGULAR ± 1°	DRAWN BY SK.HAN DATE 2007/12/13 CHECKED BY WY.YANG DATE 2007/12/13 APPROVED BY EH.JUNG DATE 2007/12/13	TITLE	2.5 PITCH W/B CONN. HOUSING		
	DRAFT WHERE APPLICABLE MUST REMAIN WITHIN DIMENSIONS	SEE TABLE	MATERIAL NO. SD-35155-***0*	MOLEX INCORPORATED			
		SIZE A3	THIS DRAWING CONTAINS INFORMATION THAT IS PROPRIETARY TO MOLEX INCORPORATED AND SHOULD NOT BE USED WITHOUT WRITTEN PERMISSION				