

Excellent Integrated System Limited

Stocking Distributor

Click to view price, real time Inventory, Delivery & Lifecycle Information:

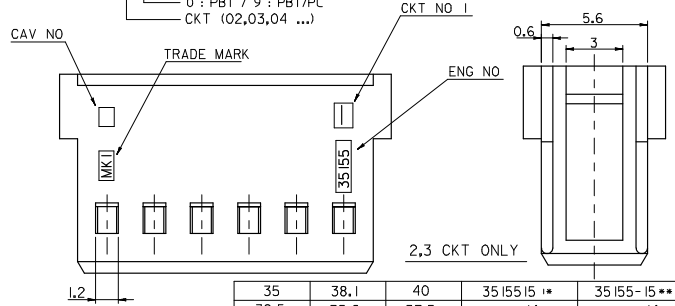
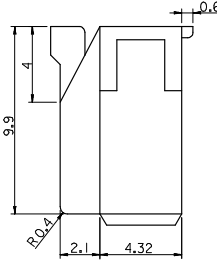
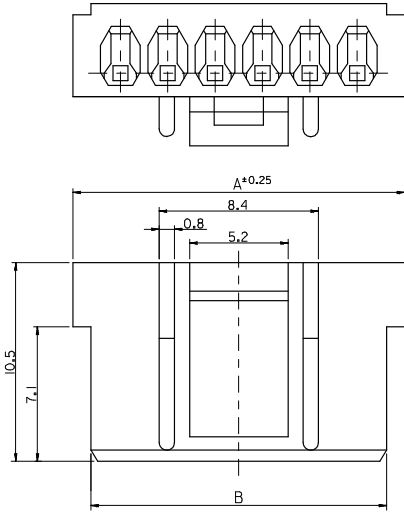
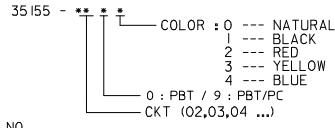
[Molex Connector Corporation](#)
[0351551202](#)

For any questions, you can email us directly:
sales@integrated-circuit.com

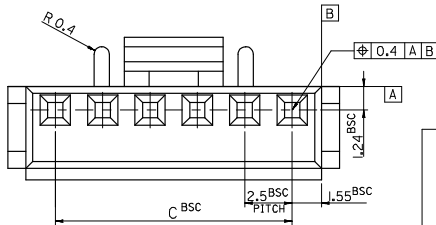
NOTE

1. MATERIAL : SEE TABLE
2. USED WITH TERMINAL : 5103-*
3. MATED WITH WAFER ASS'Y : 35312-***

LEGEND



35	38.1	40	3515515 *	35155-15**	15
32.5	35.6	37.5	14 **	-14**	14
30	33.1	35	13 **	-13**	13
27.5	30.6	32.5	12 **	-12**	12
25	28.1	30	11 **	-11**	11
22.5	25.6	27.5	10 **	-10**	10
20	23.1	25	09 **	-09**	9
17.5	20.6	22.5	08 **	-08**	8
15	18.1	20	07 **	-07**	7
12.5	15.6	17.5	06 **	-06**	6
10	13.1	15	05 **	-05**	5
7.5	10.6	12.5	04 **	-04**	4
5	8.1	10	03 **	-03**	3
2.5	5.6	7.5	3515502 **	35155-020**	2
C	B	A	MATERIAL NO.	ENG NO.	CKT.



REVISED EC NO: KOR2008-0103 DRWNS: HANOI 2007/12/13 CHKDWT: YANG 2007/12/13 APPR: TUNSTIKKIM 2007/12/13	QUALITY SYMBOLS	GENERAL TOLERANCES (UNLESS SPECIFIED)	DIMENSION STYLE IN/MM	SCALE 5:1	DESIGN UNITS METRIC	THIRD ANGLE PROJECTION	
	▽=0 ▽=0	4 PLACES ± --- ± --- 3 PLACES ± --- ± --- 2 PLACES ± --- ± --- 1 PLACE ± 0.1 ± --- ANGULAR ± 1°	DRAWN BY SK.HAN DATE 2007/12/13 CHECKED BY MY.YANG DATE 2007/12/13 APPROVED BY EH.JUNG DATE 2007/12/13	TITLE	2.5 PITCH W/B CONN. HOUSING		
	DRAFT WHERE APPLICABLE MUST REMAIN WITHIN DIMENSIONS	SEE TABLE	MATERIAL NO. SD-35155-***0*	MOLEX INCORPORATED			
		SIZE A3	THIS DRAWING CONTAINS INFORMATION THAT IS PROPRIETARY TO MOLEX INCORPORATED AND SHOULD NOT BE USED WITHOUT WRITTEN PERMISSION				