

## Excellent Integrated System Limited

Stocking Distributor

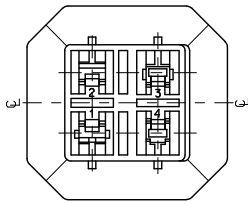
Click to view price, real time Inventory, Delivery & Lifecycle Information:

[Molex Connector Corporation](#)  
[0351803409](#)

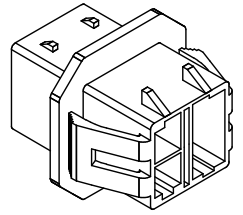
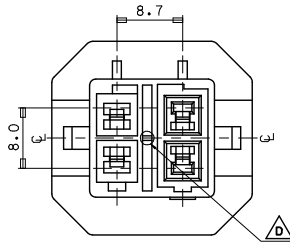
For any questions, you can email us directly:

[sales@integrated-circuit.com](mailto:sales@integrated-circuit.com)

10 9 8 7 6 5 4 3 2 1

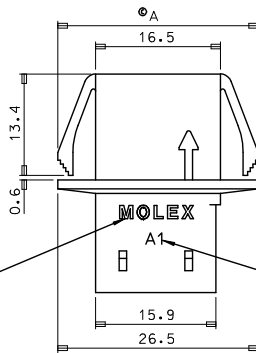
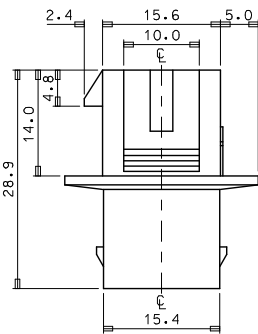


VIEW "A"



NOTES.

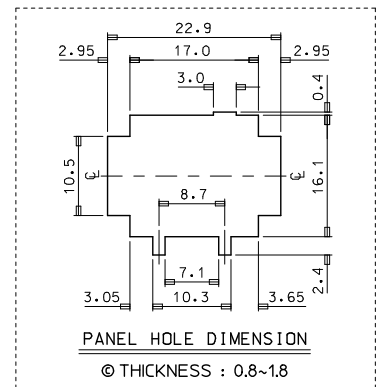
1. MATERIAL & COLOR : SEE TABLE
2. MATED HOUSING : 35181-020\*, 35965-020\*/920\*  
35181-021\*, 35965-021\*/921\*
3. APPLICABLE TERMINAL : 35745-0\*10 (1 CIRCUIT)  
35746-0\*10 (3 CIRCUIT)  
35747-0\*10 (2 CIRCUIT)  
35748-0\*10 (4 CIRCUIT)
- ④ 4. APPLICABLE T.P.A : 35182-029\*
5. PRODUCT SPECIFICATION : PS-35180-002



TRADE MARK

©TOOL & CAVITY NO (TOOL:A.B.,CAV:1,2..)

VIEW "A"



PANEL HOLE DIMENSION

© THICKNESS : 0.8-1.8

NO	PRODUCT		MATERIAL		DIMENSION ④(A)
	PART NO	MATERIAL NO	COLOR	DESCRIPTION	
1	35180-0400	351800400	NATURAL	PBT (UL94V-0)	26.2
2	35180-0404	351800404	BLUE		
3	35180-0409	351800409	NATURAL		
4	35180-3409	351803409	YELLOW	PC/PET (UL94V-0)	26.5
5	35180-4409	351804409	BLUE		

REVISED	EC. NO. K0R2014-0009	2013/08/12
DRWN: JSSHIN		2013/09/03
CHKD: SICHU		
APPR: YSK/M02		
REV	DESCRIPTION	
D1		

QUALITY SYMBOLS
▽=0
▽=0

GENERAL TOLERANCES (UNLESS SPECIFIED)		
	mm	INCH
4 PLACES	± ---	± ---
3 PLACES	± ---	± ---
2 PLACES	± ---	± ---
1 PLACE	± 0.3	± ---
ANGULAR ± 1 °		
DRAFT WHERE APPLICABLE MUST REMAIN WITHIN DIMENSIONS		

DIMENSION STYLE	
MM ONLY	
DRAWN BY	DATE
JS. KANG	1995/09/28
CHECKED BY	DATE
CW. LEE	1995/09/28
APPROVED BY	DATE
CW. LEE	1995/09/28
MATERIAL NO.	
SEE TABLE	
SIZE	
A3	

SCALE	DESIGN UNITS	THIRD ANGLE PROJECTION
2:1	METRIC	
TITLE		
.070 MULTI W/W CONN MALE HSG-4P		
MOLEX INCORPORATED		
DOCUMENT NO.	SHEET NO.	
SD-35180-040*	1 OF 01	

9 8 7 6 5 4 3 2 1