

Excellent Integrated System Limited

Stocking Distributor

Click to view price, real time Inventory, Delivery & Lifecycle Information:

[Molex Connector Corporation](#)
[0351991500](#)

For any questions, you can email us directly:

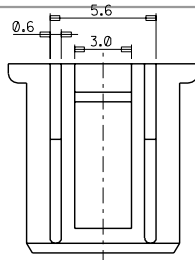
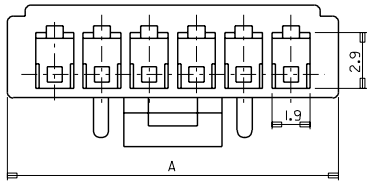
sales@integrated-circuit.com

ENG. NO. SD 35199-**-000

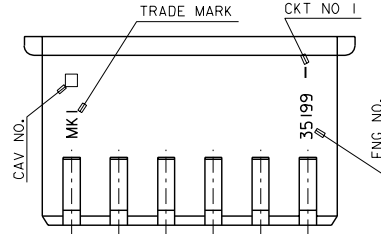
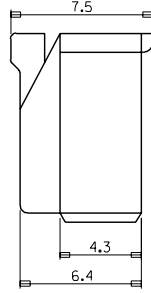
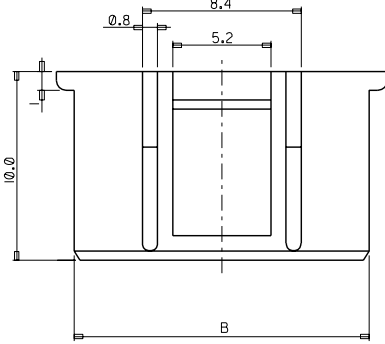
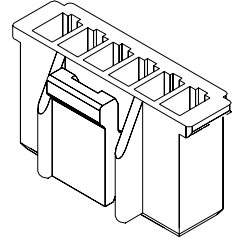
EDP NO. 35199-**-000

SIMILAR ITEM

PROJECT NO.



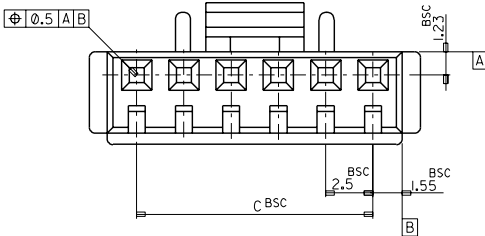
3 CKT ONLY



NOTE

1. MATERIAL : PBT UL94V-0
2. USED TERMINAL : 35074-8001/9002
3. MATED : 35312/35184

35.0	38.1	40.0	35199-1500	15
32.5	35.6	37.5		14
30.0	33.1	35.0		13
27.5	30.6	32.5		12
25.0	28.1	30.0		11
22.5	25.6	27.5		10
20.0	23.1	25.0		9
17.5	20.6	22.5		8
15.0	18.1	20.0		7
12.5	15.6	17.5		6
10.0	13.1	15.0		5
7.5	10.6	12.5		4
5.0	8.1	10.0	35199-0300	3
C	B	A	ENG NO.	CKT



				MATERIAL PBT UL94V-0		molex MOLEX-KOREA CO.,LTD.	
C	REVISED	97-038	97-4/07	GENERAL TOLERANCE DIMENSION : 0.2		DRAWN BY H.S.SHIN	
B	REVISED	96-094	96-8/20	ANGLE : °		CHK'D BY	
A	NEW RELEASED	96-047	96-4/15	DIMENSION CLASSIFICATION		APP'D BY	
Ø	PROPOSAL		96-2/23	▽ : CRITICAL ▼ : MAJOR () : REFERENCE		SCALE 5-1	
LTR	REVISION RECORD	ECN	DATE	ASS'Y PART DESCRIPTION		TITLE: 2.5 PITCH W/B CONN. HOUSING	
REVISE ONLY ON CAD SYSTEM				ENG. NO.		SHEET 1/1	
						ENG. NO. SD 35199-**-000	
						REV C	

THIS DRAWING CONTAINS INFORMATION THAT IS PROPRIETARY TO MOLEX(KOREA) AND SHOULD NOT BE USED WITHOUT WRITTEN PERMISSION MX-A3(ANSI:290,420)