

## Excellent Integrated System Limited

Stocking Distributor

Click to view price, real time Inventory, Delivery & Lifecycle Information:

[Molex Connector Corporation](#)  
[0353010260](#)

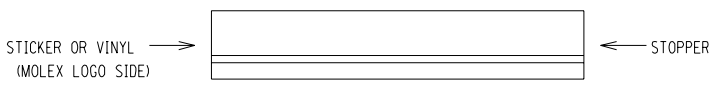
For any questions, you can email us directly:

[sales@integrated-circuit.com](mailto:sales@integrated-circuit.com)

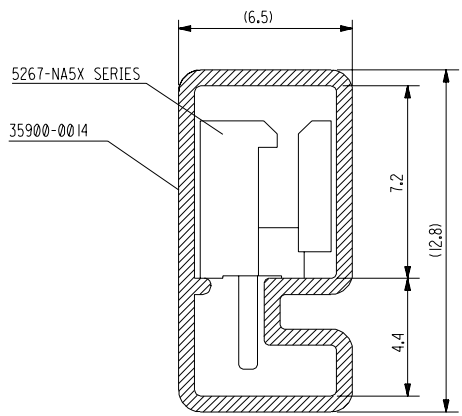
DWG. NO.  
SD-35301-002

SIMILAR ITEM

PROJECT NO.



VIEW V



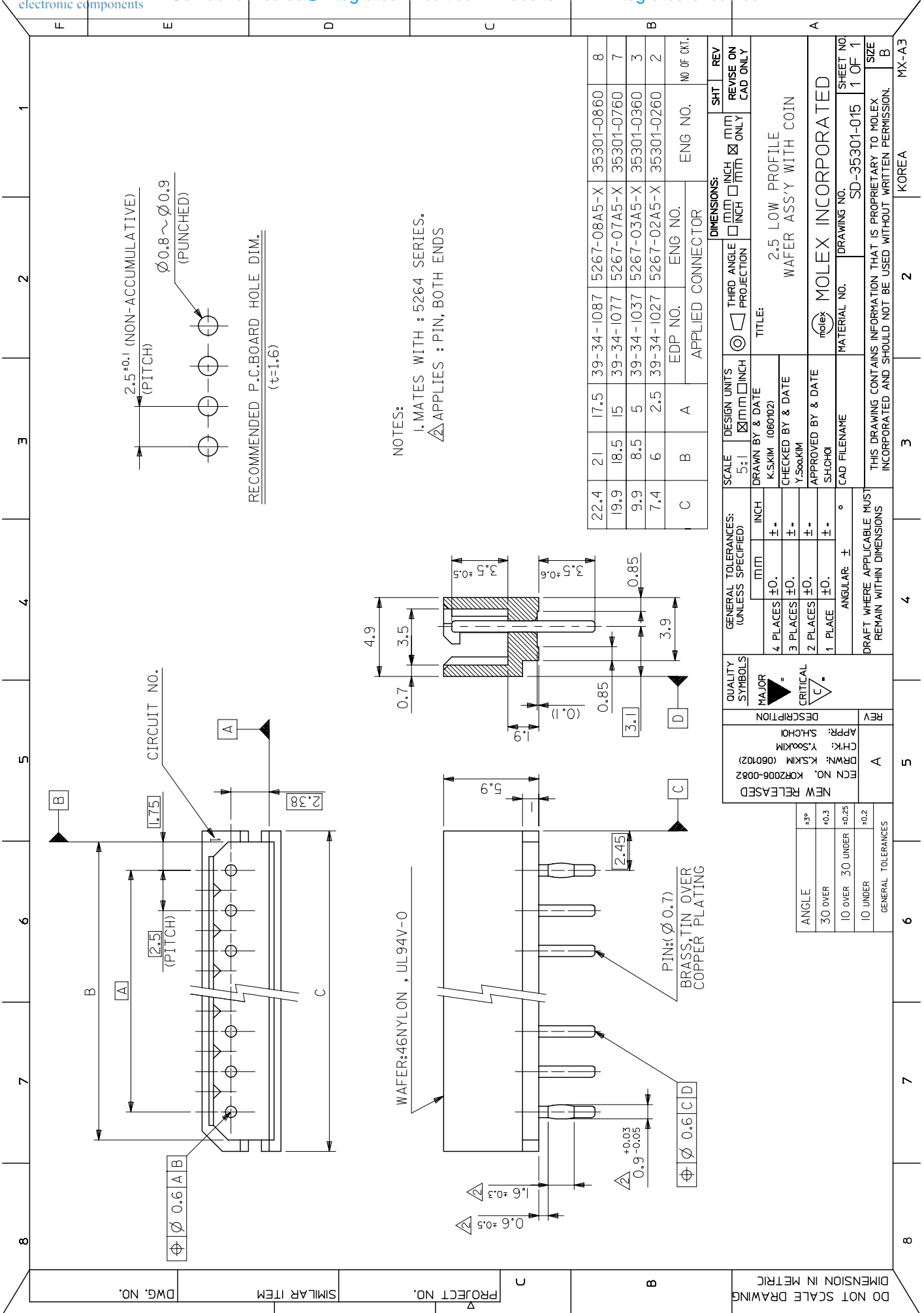
NOTES

1. PACKING TYPE : STOPPER & STICKER LOCKING TYPE(GENERAL)  
: VINYL & STOPPER LOCKING TYPE(FOR S/S)
2. THICKNESS : 0.6 ±
3. LENGTH : 550 mm

8	35301-0860	353010860	20	5267-NA5X SERIES
7	35301-0760	353010760	25	
3	35301-0360	353010360	50	
2	35301-0260	353010260	70	
CKTS	ENG NO.	MAT'L NO.	Q'TY/TUBE	USED ON

NEW RELEASED EC NO. KOR2002-0048 DRWN: KSKIM(011130) CHK: J.K.OH APPR: C.W.LEE	QUALITY SYMBOLS MAJOR CRITICAL	GENERAL TOLERANCES: (UNLESS SPECIFIED)		SCALE 5 : 1	DESIGN UNITS <input checked="" type="checkbox"/> mm <input type="checkbox"/> INCH	THIRD ANGLE PROJECTION <input type="checkbox"/> <input checked="" type="checkbox"/>	DIMENSIONS: <input type="checkbox"/> mm <input type="checkbox"/> INCH <input checked="" type="checkbox"/> mm ONLY	SHT REV												
	DESCRIPTION	<table border="1"> <tr> <td>4 PLACES</td> <td>±0.</td> <td>±.</td> </tr> <tr> <td>3 PLACES</td> <td>±0.</td> <td>±.</td> </tr> <tr> <td>2 PLACES</td> <td>±0.</td> <td>±.</td> </tr> <tr> <td>1 PLACE</td> <td>±0.4</td> <td>±.</td> </tr> </table> ANGULAR: ± 3 °	4 PLACES	±0.	±.	3 PLACES	±0.	±.	2 PLACES	±0.	±.	1 PLACE	±0.4	±.	DRAWN BY & DATE K.S.KIM(011130)	TITLE: TUBE PACKAGED FOR 5267-NA5X SERIES				
	4 PLACES	±0.	±.																	
	3 PLACES	±0.	±.																	
2 PLACES	±0.	±.																		
1 PLACE	±0.4	±.																		
REV	DRAFT WHERE APPLICABLE MUST REMAIN WITHIN DIMENSIONS	APPROVED BY & DATE C.W.LEE	MOLEX INCORPORATED KOREA																	
A		CAD FILENAME E35301B.DGN	MATERIAL NO. SEE TABLE	DRAWING NO. SD-35301-002	SHEET NO. 1 OF 1	SIZE A														

MX-A4

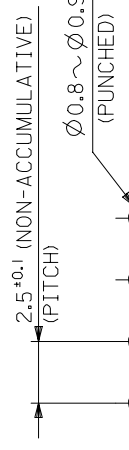


DWG. NO.

SIMILAR ITEM

PROJECT NO.

DO NOT SCALE DRAWING  
DIMENSION IN METRIC



RECOMMENDED P.C.B. BOARD HOLE DIM.  
(t=1.6)

NOTES:  
1. MATES WITH : 5264 SERIES.  
2. APPLIES : PIN, BOTH ENDS

22.4	21	17.5	39-34-1087	5267-08A5-X	35301-0860	8
19.9	18.5	15	39-34-1077	5267-07A5-X	35301-0760	7
9.9	8.5	5	39-34-1037	5267-03A5-X	35301-0360	3
7.4	6	2.5	39-34-1027	5267-02A5-X	35301-0260	2
C	B	A	EDP NO.	ENG NO.	ENG NO.	NO OF CKT.

SCALE	DESIGN UNITS	THIRD ANGLE PROJECTION	SHT	REV
5:1	MM/INCH	☐	NO	NO
DRAWN BY & DATE		MATERIAL NO.		SHEET NO.
K.S.KIM (060102)		SD-35301-015		1 OF 1
CHECKED BY & DATE		DRAWING NO.		SIZE
Y.SOOKIM		MOLEX INCORPORATED		B
APPROVED BY & DATE		MATERIAL NO.		MX-A3
SHCHOI		SD-35301-015		
CAD FILENAME		DRAWING NO.		
		SD-35301-015		

GENERAL TOLERANCES: (UNLESS SPECIFIED)	QUALITY SYMBOLS	DESCRIPTION	REV
MM INCH	MAJOR	NEW RELEASED	A
4 PLACES ±0.	CRITICAL	ECN NO. KOR2006-0082	
3 PLACES ±0.		DRWF: K.S.KIM (060102)	
2 PLACES ±0.		CHK: Y.SOOKIM	
1 PLACE ±0.		APP: SHCHOI	
ANGULAR: ±			

ANGLE	30 OVER	10 OVER	10 UNDER	GENERAL TOLERANCES
±3°	+0.3	+0.25	+0.2	

APPLIED CONNECTOR

TITLE: 2.5 LOW PROFILE WAFER ASS'Y WITH COIN

MOLEX INCORPORATED

THIS DRAWING CONTAINS INFORMATION THAT IS PROPRIETARY TO MOLEX INCORPORATED AND SHOULD NOT BE USED WITHOUT WRITTEN PERMISSION.