

Excellent Integrated System Limited

Stocking Distributor

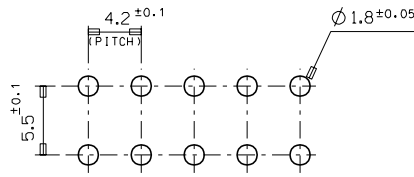
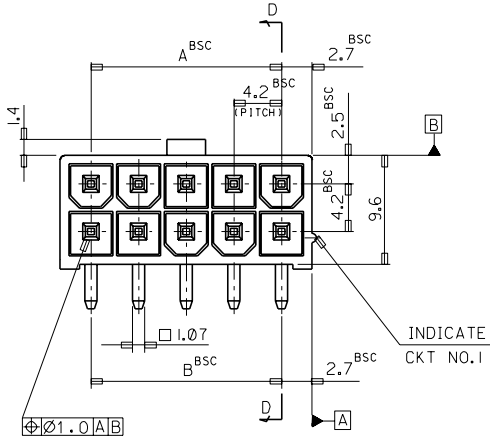
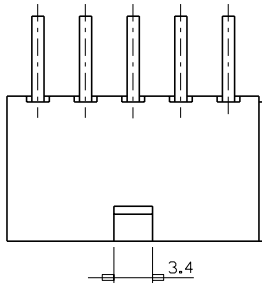
Click to view price, real time Inventory, Delivery & Lifecycle Information:

[Molex Connector Corporation](#)
[0353180820](#)

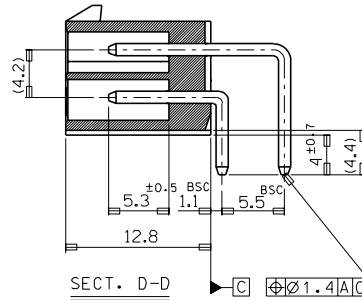
For any questions, you can email us directly:

sales@integrated-circuit.com

PROJECT NO. 35318-****
SIMILAR ITEM
EDP NO. 35318-****
ENG. NO. SD-35318-****



RECOMMENDED P.C. BOARD PATTERN



NOTES

1. WHEN MATED WITH 5557-NR, 5557-NR-210 TO BE SURELY LOCKED.

2. MATERIAL: WAFER — NYLON66 UL94V-0
NYLON66 UL94V-2
PIN — BRASS (TIN PLATED)

LEGEND

35318 - ** * *
Ø: NATURAL
I: BLACK
1: NYLON66 UL94V-0
2: NYLON66 UL94V-2
CKT

46.2	46.2	35318	-24**	24
42.0	42.0		-22**	22
37.8	37.8		-20**	20
33.6	33.6		-18**	18
29.4	29.4		-16**	16
25.2	25.2		-14**	14
21.0	21.0		-12**	12
16.8	16.8		-10**	10
12.6	12.6		-08**	8
8.4	8.4		-06**	6
4.2	4.2	35318	-04**	4
A	B	ENG. NO.		CIRCUIT

MATERIAL			MOLEX MOLEX-KOREA CO.,LTD.	
B	REVISED	96-022 96/2/26	GENERAL TOLERANCE DIMENSION : ± 0.3 ANGLE : ± 1°	DRAWN BY D. J. KIM
A	NEW RELEASED	94-074 94/12/20	DIMENSION CLASSIFICATION ▽ : CRITICAL ▼ : MAJOR () : REFERENCE	CHK'D BY
1	REVISED	94-017 94/9/7	ASS'Y PART	APP'D BY
0	PRE-RELEASED	93/5/1	DESCRIPTION	SCALE 3/1
LTR	REVISION RECORD	ECN DATE	ENG. NO.	TITLE: NEW MINI FIT CONN. R/A WAFER ASSY
REVISE ONLY ON CAD SYSTEM			ENG. NO.	SHEET REV B
			SD-35318-****	