

Excellent Integrated System Limited

Stocking Distributor

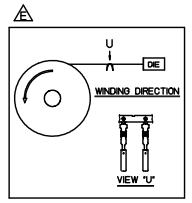
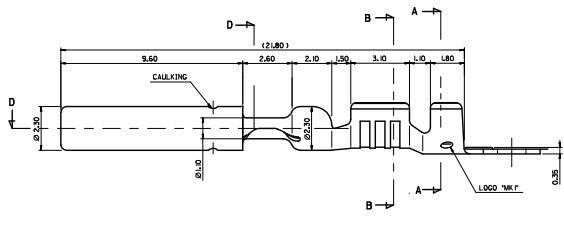
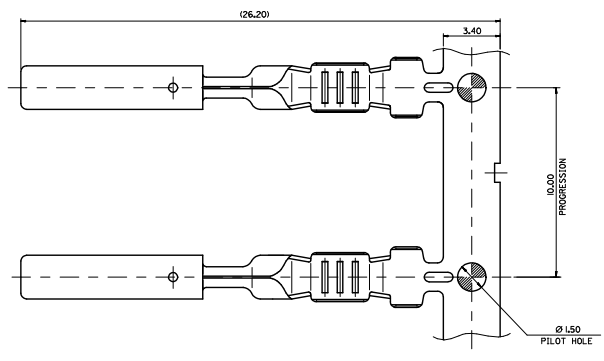
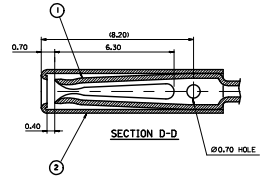
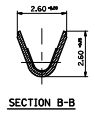
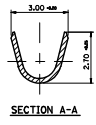
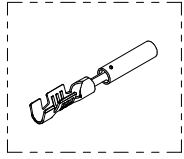
Click to view price, real time Inventory, Delivery & Lifecycle Information:

[Molex Connector Corporation](#)
[0354031002](#)

For any questions, you can email us directly:

sales@integrated-circuit.com

10 9 8 7 6 5 4 3 2 1



- NOTE**
- RECOMMENDED LENGTH OF WIRE STRIP : 4.0-4.6
 - FINISH : CIRCULOCK F/TML BODY(TIN PLATING), SLEEVE(TIN PLATING)
 - WIRE RANGE (mm2) : AVS(AVSS) 0.3-0.85
 - MATERIAL
- | NO. | ENG. NO. | PART NAME | MATERIAL |
|-----|------------|----------------------|-----------------------------|
| 1 | 35402-8002 | CIRCULOCK F/TML BODY | COPPER ALLOY THICKNESS 0.25 |
| 2 | 35401-9102 | SLEEVE | BRASS (THICKNESS : 0.25) |

REVISED EC. NO.: KTR2015-0113 DRWN:JKSE001 2015/06/09 CHKC: JYCHOI APPR: JYCHOI 2015/07/22	QUALITY SYMBOLS	GENERAL TOLERANCES (UNLESS SPECIFIED)	DIMENSION STYLE	SCALE	DESIGN UNITS	THIRD ANGLE PROJECTION
	▼=0 ▽=0	4 PLACES ± --- ± --- 3 PLACES ± --- ± --- 2 PLACES ± --- ± --- 1 PLACE ± 0.15 ± --- ANGULAR ± 1°	MM ONLY	10:1	METRIC	
		DRAFT WHERE APPLICABLE MUST REMAIN WITHIN DIMENSIONS	DRAWN BY JKSE001 DATE 2015/06/09 CHECKED BY DATE APPROVED BY DATE			1.0 FEMALE TERMINAL
			MATERIAL NO. SEE TABLE DOCUMENT NO. SD-35403-1002 SIZE A3 THIS DRAWING CONTAINS INFORMATION THAT IS PROPRIETARY TO MOLEX INCORPORATED AND SHOULD NOT BE USED WITHOUT WRITTEN PERMISSION			MOLEX INCORPORATED

9 8 7 6 5 4 3 2 1