

Excellent Integrated System Limited

Stocking Distributor

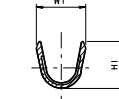
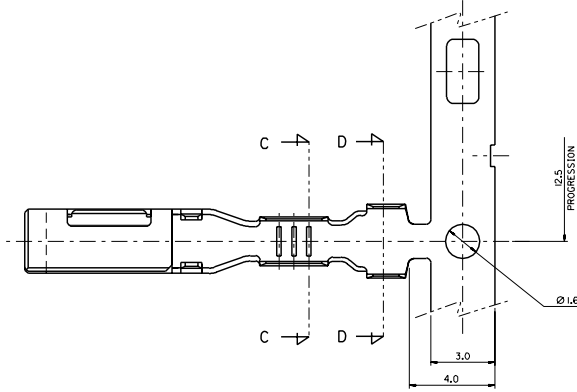
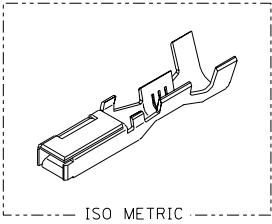
Click to view price, real time Inventory, Delivery & Lifecycle Information:

[Molex Connector Corporation](#)
[0354076502](#)

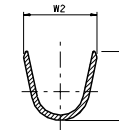
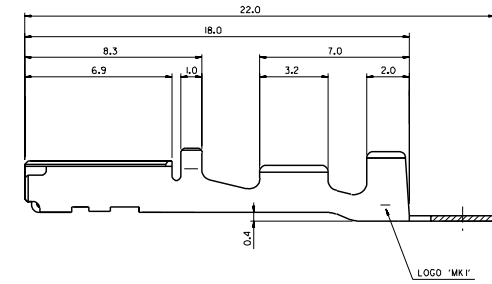
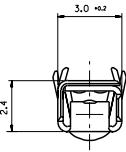
For any questions, you can email us directly:

sales@integrated-circuit.com

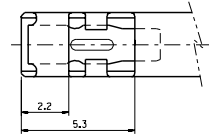
DWG. NO. SD-35407-002
 SIMILAR ITEM
 PROJECT NO.
 E
 D
 C
 B
 DO NOT SCALE DRAWING
 DIMENSION IN METRIC



SECTION: C-C



SECTION: D-D



NOTE

1. MATERIAL: COPPER ALLOY, ±0.25.
2. FINISH: PRE-TIN PLATE.
3. RECOMMENDED LENGTH OF WIRE STRIP: 5.0-5.6.
4. INSERTION-EXTRACTION FORCE WITH TAB TERMINAL P/N 35420.
 INSERTION FORCE : 0.30±1.0 Kgf.
 AFTER SIX TIMES OF INSERTION & EXTRACTION FORCE : 0.15±1.0 Kgf.

NO.	ENG-NO.	TYPE	PART NAME	CABLE SIZE (mm ²)	DIMENSION			
					W1	H1	W2	H2
1	35407-6102	ISI	.090 FEMALE TER'L	AVSSIAVS) 0.3 - 0.5	2.5	2.4	3.4	3.5
2	35407-6202	LI	.090 FEMALE TER'L	AVSSIAVS) 2.0	3.6	3.5	4.0	4.0
3	35407-6502	MI	.090 FEMALE TER'L	AVSSIAVS) 0.85 - 1.25	2.6	3.0	4.0	4.0

CHANGED TENSION SPEC. EC NO. K09002-0090 (REVISED) 02/07/08 (PREVIOUS EDITION 02/07/08) APPROVED	QUALITY SYMBOLS MAJOR CRITICAL	GENERAL TOLERANCES: (UNLESS SPECIFIED) mm INCH	SCALE: 8:1 DESIGN UNITS: mm INCH	DIMENSIONS: THRD ANGLE PROJECTION	SHT REV REVISION ON CAD ONLY	
	4 PLACES ±0.1 3 PLACES ±0.1 2 PLACES ±0.1 1 PLACE ±0.25	DRAWN BY & DATE B.C.YOON '98.4.10 CHECKED BY & DATE B.K.CHOI '98.4.10 APPROVED BY & DATE C.W.LEE '98.4.10	ANGLAR: ± 1°	CAD FILENAME SD35407.DGN	MATERIAL NO. 354076102	DRAWING NO. SD-35407-002
	DRAFT WHERE APPLICABLE MUST REMAIN WITHIN DIMENSIONS		THIS DRAWING CONTAINS INFORMATION THAT IS PROPRIETARY TO MOLEX INCORPORATED AND SHOULD NOT BE USED WITHOUT WRITTEN PERMISSION.		TITLE: .090 FEMALE TER'L (FT TYPE)	SHEET NO. 1 OF 1 SIZE C
	MOLEX INCORPORATED				MX-A2	