

Excellent Integrated System Limited

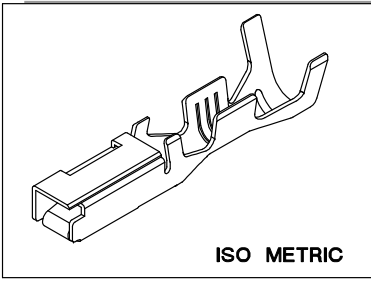
Stocking Distributor

Click to view price, real time Inventory, Delivery & Lifecycle Information:

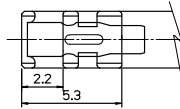
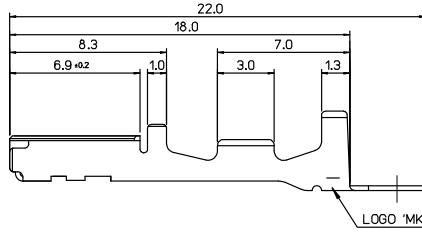
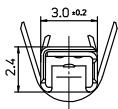
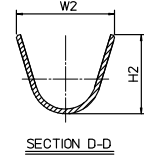
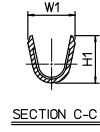
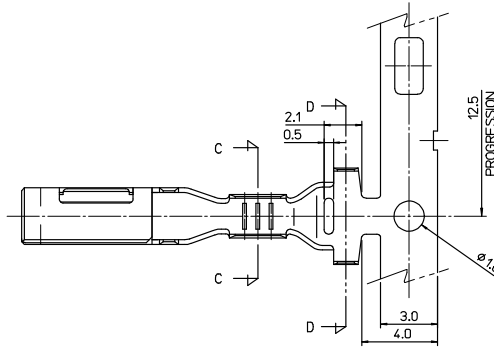
[Molex Connector Corporation](#)
[0354076702](#)

For any questions, you can email us directly:

sales@integrated-circuit.com



ISO METRIC



NOTES

1. MATERIAL: COPPER ALLOY, t=0.25mm
2. FINISH: PRE-TIN PLATED
3. RECOMMENDED LENGTH OF WIRE STRIP: 5.0-5.6

CHANGED OF ISOMETRIC	EC NO: KOR2008-0108	2007/12/28
DRWNER:KIM	CHKDR:CYOON	2008/01/02
APPR:YUNSIKIM		2008/01/02

QUALITY SYMBOLS	▽=0
	▽=0

GENERAL TOLERANCES (UNLESS SPECIFIED)	mm	INCH
	4 PLACES ± --- ± ---	3 PLACES ± --- ± ---
	2 PLACES ± --- ± ---	1 PLACE ± 0.25 ± ---
ANGULAR ± 1 °		
DRAFT WHERE APPLICABLE MUST REMAIN WITHIN DIMENSIONS		

DIMENSION STYLE	MM ONLY
SCALE	5:1
DESIGN UNITS	METRIC
THIRD ANGLE PROJECTION	☉ □
DRAWN BY	BCYOON
DATE	1998/04/10
CHECKED BY	BKCHOI
DATE	1998/04/10
APPROVED BY	CWLEE
DATE	1998/04/10

TITLE	.090 SEALED FEMALE TER'L	
MATERIAL NO.	SEE TABLE	DOCUMENT NO. SD-35407-001
MOLEX INCORPORATED		SHEET NO. 1 OF 1
THIS DRAWING CONTAINS INFORMATION THAT IS PROPRIETARY TO MOLEX INCORPORATED AND SHOULD NOT BE USED WITHOUT WRITTEN PERMISSION		

NO.	ENG. NO.	TYPE	DESCRIPTION	CABLE SIZE(mm ²) AVS. AVSS	DIMENSION			
					W1	H1	W2	H2
1	35407-6702	S	.090 SEALED FEMALE TER'L	0.3 - 0.5	2.5	2.2	5.1	4.2
2	35407-6802	M	.090 SEALED FEMALE TER'L	0.85-1.25	2.6	3.0	5.2	4.7
3	35407-6902	L	.090 SEALED FEMALE TER'L	2.0	4.0	3.5	5.2	4.7