

Excellent Integrated System Limited

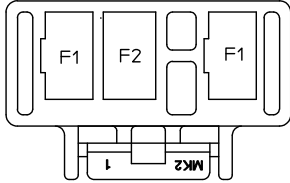
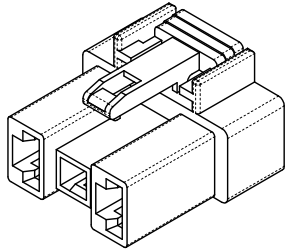
Stocking Distributor

Click to view price, real time Inventory, Delivery & Lifecycle Information:

[Molex Connector Corporation](#)
[0355720400](#)

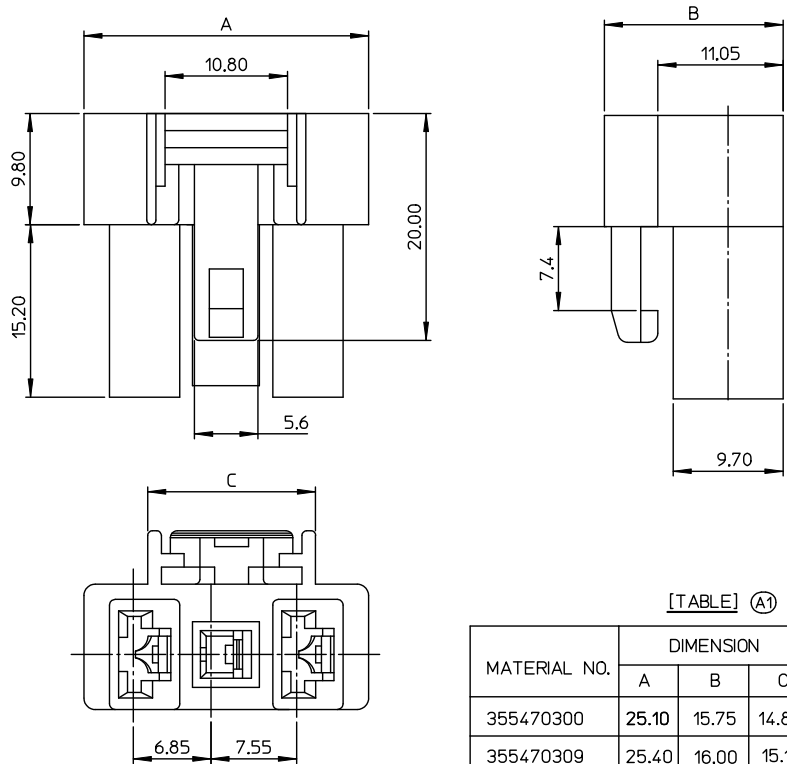
For any questions, you can email us directly:

sales@integrated-circuit.com



F1 TERMINAL : 35725-5*10
F2 TERMINAL : 35766-0*10

TERMINAL PATTERN



[TABLE] (A1)

MATERIAL NO.	DIMENSION			MATERIAL
	A	B	C	
355470300	25.10	15.75	14.80	POLYESTER
355470309	25.40	16.00	15.10	PET/PC

NOTES

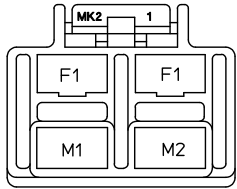
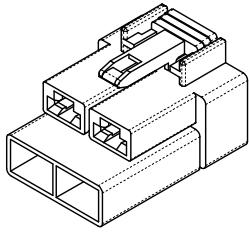
- MATERIAL :
① 35547-0300 : POLYESTER(PBT), NO GLASS FILLED, UL94V-0
COLOR : NATURAL

- (A1) ② 35547-0309 : PET/PC, NO GLASS FILLED, UL94V-0
COLOR : NATURAL

- PRODUCT SPECIFICATION : PS-35546-001
- PACKING SPECIFICATION : PK-35547-001
- MATED HOUSING : 35546-070*
- APPLICABLE TERMINAL : 35725-5*10
35766-0*10

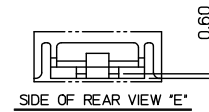
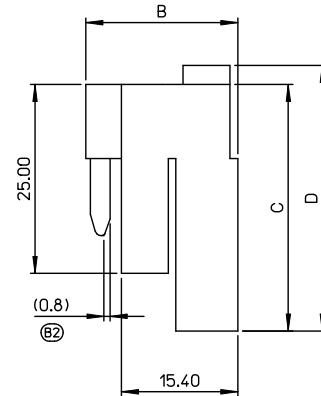
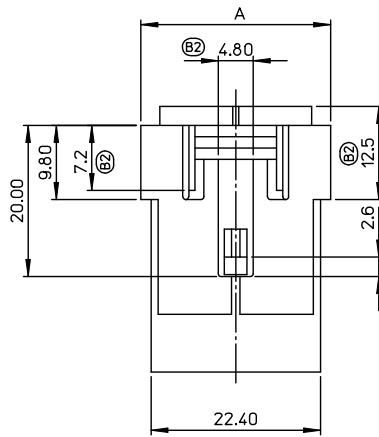
PRELIMINARY REVISED EC NO: KOR2013-0051 DRAWN: JSSHIN 2012/12/20 CHECKED: SJCHU 2012/12/20 APPR: YSK(M02) 2012/12/21	QUALITY SYMBOLS ▽=0 ▽=0	GENERAL TOLERANCES (UNLESS SPECIFIED)		DIMENSION STYLE MM ONLY		SCALE 4:1	DESIGN UNITS METRIC	THIRD ANGLE PROJECTION	
		4 PLACES ± --- ± ---	3 PLACES ± --- ± ---	DRAWN BY WY. YANG	DATE 1997/11/12	TITLE .250 MULTI W-T-W CONN. PLUG HOUSING -3P			
		2 PLACES ± 0.30 ± ---	1 PLACE ± 0.30 ± ---	CHECKED BY BK. CHOI	DATE 1997/11/12	molex			
		0 PLACE ± ±	ANGULAR ± 3 °	APPROVED BY C.W. LEE	DATE 1997/11/12				
DRAFT WHERE APPLICABLE MUST REMAIN WITHIN DIMENSIONS		MATERIAL NO. SEE TABLE		DOCUMENT NO. SD-35547-001	SHEET NO. 1 OF 1				
A1		SIZE A3		THIS DRAWING CONTAINS INFORMATION THAT IS PROPRIETARY TO MOLEX INCORPORATED AND SHOULD NOT BE USED WITHOUT WRITTEN PERMISSION					

10 9 8 7 6 5 4 3 2 1

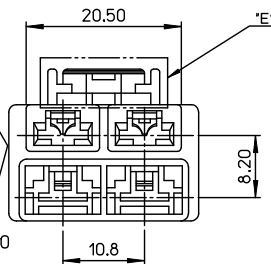


F1 TERMINAL : 35725-5*10
M1 TERMINAL : 35453-9*02
M2 TERMINAL : 35452-9*02
F = FEMALE TERMINAL
M = MALE TERMINAL

TERMINAL PATTERN



PRE-RELEASE
REFERENCE
USE ONLY



[TABLE] (B2)

MATERIAL NO.	DIMENSION				MATERIAL
	A	B	C	D	
355470400	25.10	20.10	32.60	35.10	POLYESTER
355470409	25.40	20.50	32.90	35.40	PET/PC

NOTES

1. MATERIAL :

- ① 35547-0400 : POLYESTER(PBT), NO GLASS FILLED, UL94V-0
COLOR : NATURAL
- ② 35547-0409 : PET/PC, NO GLASS FILLED, UL94V-0
② COLOR : NATURAL

2. PRODUCT SPECIFICATION : PS-35546-001

3. PACKING SPECIFICATION : PK-35547-001

4. MATED HOUSING : 35546-070*

5. APPLICABLE TERMINAL : 35725-5*10
35452-9*02
35453-9*02

RELEASED EC NO: KOR2013-0051 DRAWN: JSSHIN 2012/12/20 CHKD: SHICHU 2012/12/20 APPR: YSK(INOZ) 2012/12/21	QUALITY SYMBOLS ▽=0 ▽=0	GENERAL TOLERANCES (UNLESS SPECIFIED)		DIMENSION STYLE MM ONLY		SCALE 2:1	DESIGN UNITS METRIC	THIRD ANGLE PROJECTION	
		4 PLACES ± --- ± ---	3 PLACES ± --- ± ---	2 PLACES ± 0.30 ± ---	1 PLACE ± 0.30 ± ---	0 PLACE ± ±	ANGULAR ± 3 °	DRAWN BY WY. YANG DATE 1997/11/12 CHECKED BY BK. CHOI DATE 1997/11/12 APPROVED BY CW. LEE DATE 1997/11/12	
REV B2	DESCRIPTION	DRAFT WHERE APPLICABLE MUST REMAIN WITHIN DIMENSIONS			MATERIAL NO. SEE TABLE		DOCUMENT NO. SD-35547-002		SHEET NO. 1 OF 1

10 9 8 7 6 5 4 3 2 1