



**Distributor of Molex Connector Corporation: Excellent Integrated System Limited**  
Datasheet of 0357254310 - Connector Quick Connect Receptacle 20-22 AWG 0.250"  
(6.35mm) Crimp

Contact us: [sales@integrated-circuit.com](mailto:sales@integrated-circuit.com) Website: [www.integrated-circuit.com](http://www.integrated-circuit.com)

---

## **Excellent Integrated System Limited**

Stocking Distributor

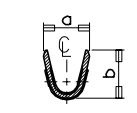
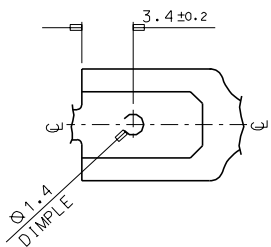
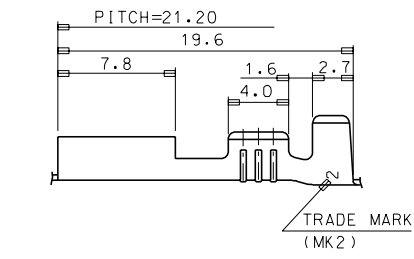
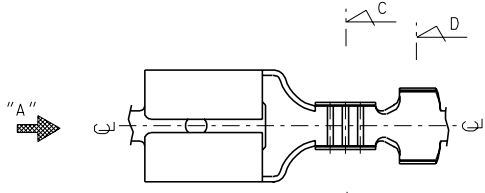
Click to view price, real time Inventory, Delivery & Lifecycle Information:

[Molex Connector Corporation](#)  
[0357254310](#)

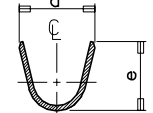
For any questions, you can email us directly:  
[sales@integrated-circuit.com](mailto:sales@integrated-circuit.com)

Contact us: sales@integrated-circuit.com Website: www.integrated-circuit.com

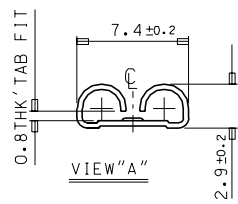
ENG. NO.	a	b	d	e	g	h	WIRE RANGE
35725-40*0	2.6	2.6	3.8	3.8	---	---	AWG #22-#20
35725-42*0	3.1	3.2	5.0	4.6	---	---	AWG #20-#18
35725-41*0	3.8	3.3	---	---	6.7	5.5	#20X2, #18X2



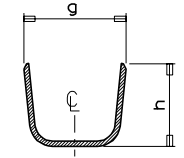
SECTION: C-C"



SECTION: D-D"



VIEW "A"



SECTION: D-D"

NOTES

1. PLATING: UNPLATED (35725-4000/4100/4200)  
POST-TIN PLATED (35725-4010/4110/4210)

DO NOT SCALE DRAWING DIMENSION IN METRIC

ASS'Y PART		QTY/REEL OR PACK	SURFACE AREA	MATERIAL	WIRE RANGE	GENERAL TOLERANCES	MOLEX-KOREA CO.,LTD.
DESCRIPTION	ENG.NO.	4,000 P' TY/REEL	MM <sup>2</sup>	C2680T-EH,0.35THK'	AWG: ---	DIM. : ±0.3	
DIE NO. ---		LAYOUT NO. ---	DIMENSION CLASSIFICATION <input type="checkbox"/> : CRITICAL <input checked="" type="checkbox"/> : MAJOR <input type="checkbox"/> : MINOR        ( ) : REFERENCE		MM <sup>2</sup> : ---	ANGLE :	REVISE ONLY ON CAD SYSTEM
WIRE CRIMP WIDTH ---		INS. CRIMP WIDTH ---	DRAWN BY	CHK'D BY	INSULATION RANGE	TITLE: .250 SLIP-ON RECEPTACLE 1 of 1	
WBDW ---	IBDW ---	APP'D BY	SCALE	4:1	---	ENG.NO.	SD 35725-4**0
LTR	REVISION RECORD	ECN	DATE	DIE FEED	APPL FEED	---	REV A

ENG. NO.

EDP NO.

SIMILAR ITEM

PROJECT NO.

DO NOT SCALE DRAWING DIMENSION IN METRIC