

Excellent Integrated System Limited

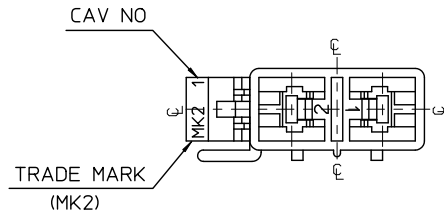
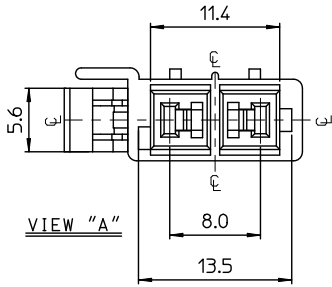
Stocking Distributor

Click to view price, real time Inventory, Delivery & Lifecycle Information:

[Molex Connector Corporation](#)
[0359650290](#)

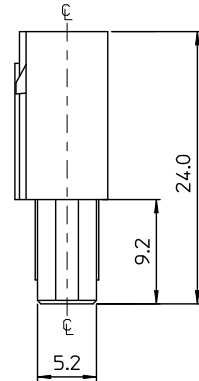
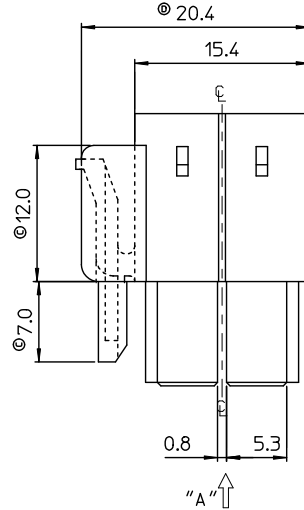
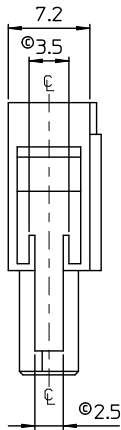
For any questions, you can email us directly:

sales@integrated-circuit.com



NOTES.

1. MATERIAL & COLOR : SEE TABLE
2. MATED HOUSING : 35180-040*
35180-060*
3. APPLICABLE TERMINAL : 35746-0*10
4. APPLICABLE T.P.A : 35965-029*
5. PRODUCT SPECIFICATION : PS-35180-002



NO.	POLYESTER(PBT)		PC/PET(UL94V-0)	
	MATERIAL	COLOR	MATERIAL	COLOR
1	35965-0200	NATURAL	35965-9200	NATURAL
2	35965-0202	RED	35965-9202	RED
3	35965-0203	BLUE	35965-9203	YELLOW
4	35965-0204	BLUE	35965-9204	BLUE

REVISED	DESCRIPTION
EC NO: KOR2010-0186	2010/05/17
DRWN: JHPARK01	2010/05/17
CHKD: SHCHU	2010/05/17
APPR: YUNSIKIM	2010/05/18

QUALITY SYMBOLS	GENERAL TOLERANCES (UNLESS SPECIFIED)	
	mm	INCH
4 PLACES	± 0.1	± 0.004
3 PLACES	± 0.15	± 0.006
2 PLACES	± 0.2	± 0.008
1 PLACE	± 0.3	± 0.012
ANGULAR ± 1°		

DIMENSION STYLE		SCALE	DESIGN UNITS	THIRD ANGLE PROJECTION
MM ONLY		3:1	METRIC	
DRAWN BY	DATE	TITLE		
JS. KANG	1995/09/28	070 MULTI FEMALE HSG 2P(A)		
CHECKED BY	DATE	MATERIAL NO.		
BK. CHOI	1995/09/28	SEE TABLE		
APPROVED BY	DATE	DOCUMENT NO.		
CW. LEE	1995/09/28	SD-35965-020*		

MATERIAL NO.		DOCUMENT NO.		SHEET NO.
SEE TABLE		SD-35965-020*		1 OF 01