

Excellent Integrated System Limited

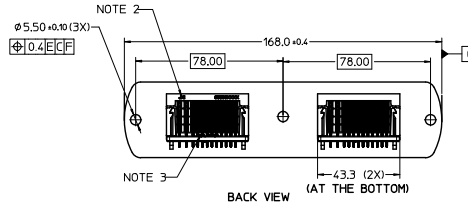
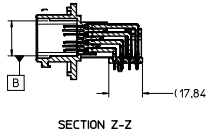
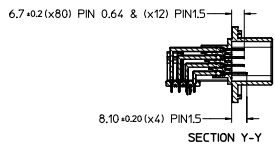
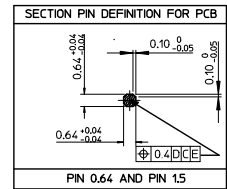
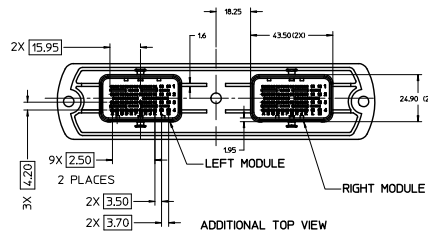
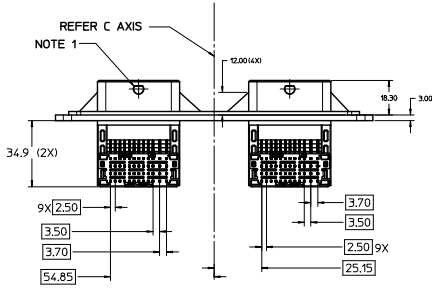
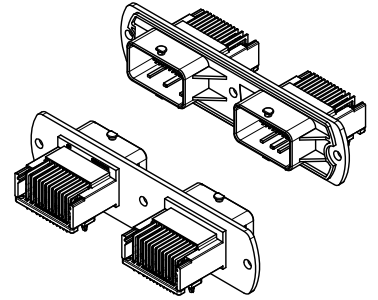
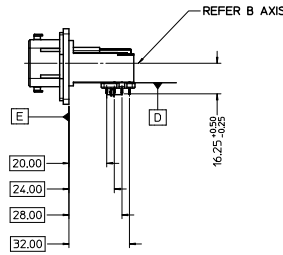
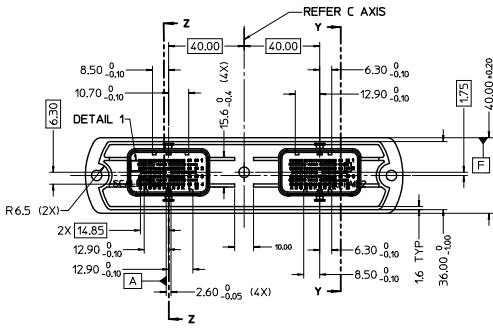
Stocking Distributor

Click to view price, real time Inventory, Delivery & Lifecycle Information:

[Molex Connector Corporation](#)
[0366480004](#)

For any questions, you can email us directly:

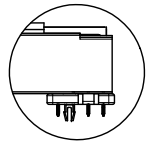
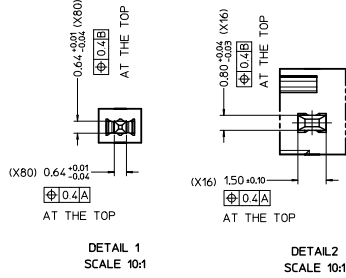
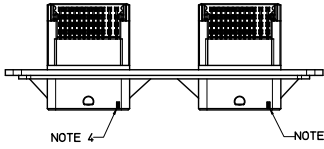
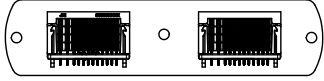
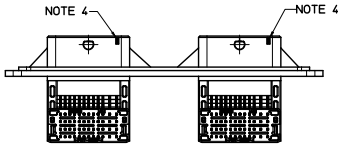
sales@integrated-circuit.com



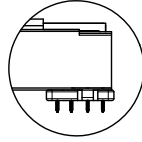
RoHS COMPLIANT

ENTER DESCRIPTION EC NO: 2002-044 DRAWN: NUTTARAR CHK: APPR: PRASAD DATE: 2011/09/28 DATE: 2011/09/28	QUALITY SYMBOLS	GENERAL TOLERANCES (UNLESS SPECIFIED)	DIMENSION STYLE	SCALE	DESIGN UNITS	THIRD ANGLE PROJECTION	
	4 PLACES ± 0.1 3 PLACES ± 0.1 2 PLACES ± 0.2 1 PLACE ± 0.2 ANGULAR ± 1°	mm INCH ± 0.1 ± 0.004 ± 0.1 ± 0.004 ± 0.2 ± 0.008 ± 0.2 ± 0.008	DRAWN BY: DKUMAR CHECKED BY: XPRASAD APPROVED BY: GJLOVE DATE: 20/12/2005 DATE: 20/12/2005 DATE: 20/12/2005	MM ONLY	1:1	METRIC	CMC HEADER T3 INTERFACE - BK & BR 96/72 AND 96/96
	DRAFT WHERE APPLICABLE MUST REMAIN WITHIN DIMENSIONS	SEE TABLE	MATERIAL NO.	DOCUMENT NO.			MOLEX INCORPORATED SD-36638-001 1 OF 3
							SHEET NO. 1 OF 3

20 19 18 17 16 15 14 13 12 11 10 9 8 7 6 5 4 3 2 1



96/96 OR 96/72 CMC HEADER WITH PCB SNAP LOCKING



96/96 OR 96/72 CMC HEADER WITHOUT PCB SNAP LOCKING

36638-0012	CMC HEADER, T3-BR & BN, WITH PCB SNAP LOCK, 96/96	BROWN	BLACK	L1 & M1 L2 & M2 L3 & M3 L4 & M4	A1 TO H1, J1 & K1 A2 TO H2, J2 & K2 A3 TO H3, J3 & K3 A4 TO H4, J4 & K4	D
36638-0011	CMC HEADER, T3-BR & BN, W/O PCB SNAP LOCK, 96/96					C
36638-0010	CMC HEADER, T3-BR & BN, WITH PCB SNAP LOCK, 96/72	BROWN	BLACK	L2 & M2 L3 & M3 L4 & M4	A2 TO H2, J2 & K2 A3 TO H3, J3 & K3 A4 TO H4, J4 & K4	B
36638-0001	CMC HEADER, T3-BR & BN, W/O PCB SNAP LOCK, 96/72					A
MOLEX PART NO.	PART DISCRPTION	LEFT MODULE COLOUR CODE	RIGHT MODULE COLOUR CODE	15 PIN	0.64 PIN	PCB LAYOUT TO BE REFERRED
CAVITIES TO BE USED						

5	GRID PLATE WITH PCB LOCK	PBT 30% GLASS FILLED	BLACK	0	2	0	2	0
4	GRID PLATE W/O PCB LOCK		BLACK	2	0	2	0	2
3	HOUSING		BLACK	1	1	1	1	1
2	PIN 150	CuZn30	NICKEL UNDERCOAT: 1.3µM TO 2.2µM	12	12	16	16	12
1	PIN 0.64	CuZn30	MATTE TIN OVERCOAT: 4µM TO 5µM	60	60	80	80	60
SL.NO	DESIGNATION	MATERIAL	FINISH	BOM QUANTITY				
				36638-0001	36638-0010	36638-0011	36638-0012	36638-0014

NOTE:

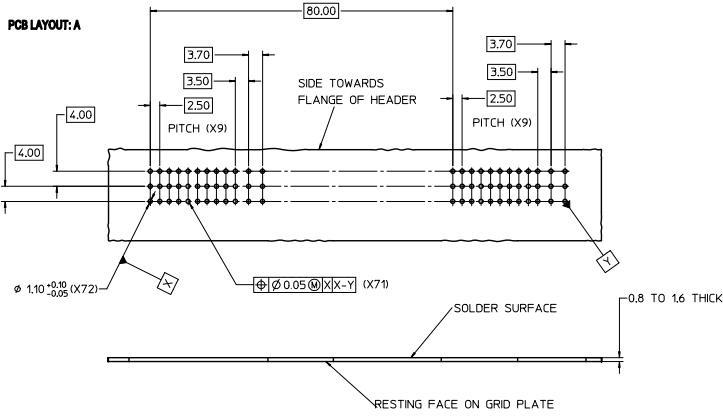
1. PAINT BROWN PAINT(RoHS COMPLIANT) AT THE SPECIFIED AREA OF LEFT MODULE ON BOTH SIDES
2. AREA FOR JX1 AND MOLEX PART NUMBER REPRESENTATION.
3. AREA FOR PLASTIC MATERIAL >PBT-30%GF< DESCRIPTION.
4. PAINT WITH WHITE COLOR(RoHS COMPLIANT) AT SPECIFIED FOUR AREAS
5. PART TO MEET SOLDERABILITY SPEC SMES-152
6. PACKAGING SPECIFICATION: PK-36638-001
7. FOR PART # 36638-0001 REFER PACKAGING SPEC:PK-36638-004

RoHS COMPLIANT

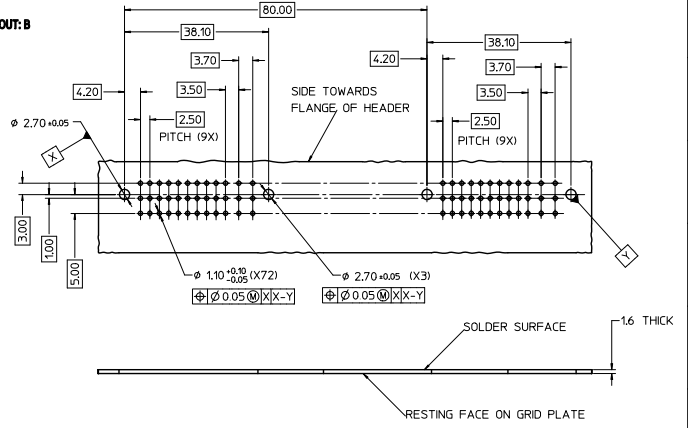
ENTER DESCRIPTION EC NO. 2002-044 DRAWN BY APPROVED BY CHECKED BY DATE	QUALITY SYMBOLS	GENERAL TOLERANCES (UNLESS SPECIFIED)	DIMENSION STYLE	SCALE	DESIGN UNITS	THIRD ANGLE PROJECTION	
	4 PLACES ±0.1 3 PLACES ±0.1 2 PLACES ±0.1 1 PLACE ±0.2 ANGULAR ±1°	mm INCH ±0.1 ±0.004 ±0.1 ±0.004 ±0.1 ±0.004 ±0.2 ±0.008 ±1° ±0.054	MM ONLY	1:1	METRIC	DRAWN BY: KUMAR CHECKED BY: XPRASAD APPROVED BY: S.JLOWE DATE: 20/12/2005	TITLE: CMC HEADER T3 INTERFACE - BK & BR 96/72 AND 96/96 MOLEX INCORPORATED DOCUMENT NO.: SD-36638-001 SHEET NO.: 2 OF 3
	DRAFT WHERE APPLICABLE MUST REMAIN WITHIN DIMENSIONS						SEE TABLE
	THIS DRAWING CONTAINS INFORMATION THAT IS PROPRIETARY TO MOLEX INCORPORATED AND SHOULD NOT BE USED WITHOUT WRITTEN PERMISSION						

19 18 17 16 15 14 13 12 11 10 9 8 7 6 5 4 3 2 1

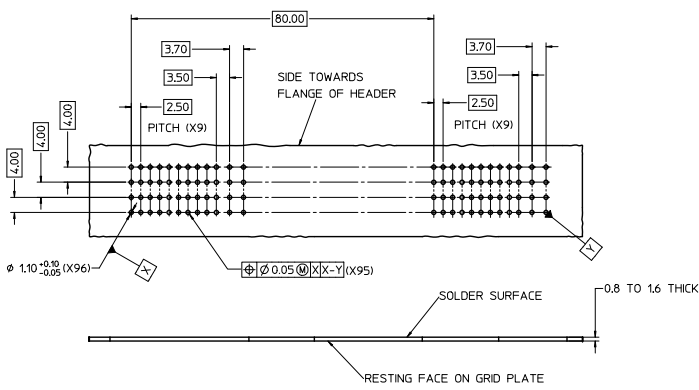
PCB LAYOUT: A



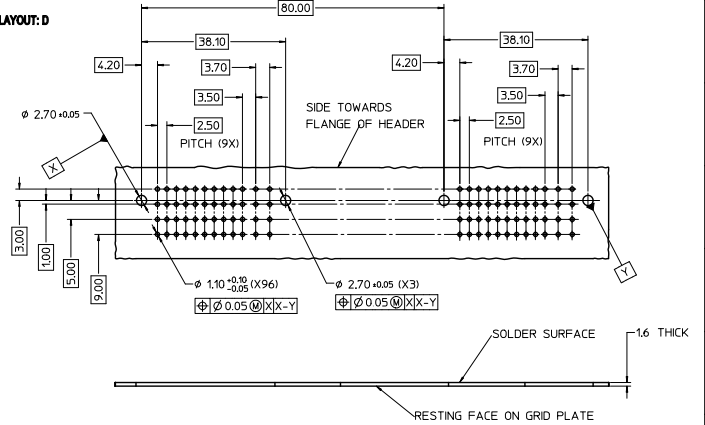
PCB LAYOUT: B



PCB LAYOUT: C



PCB LAYOUT: D



RoHS COMPLIANT

ENTER DESCRIPTION EC NO. 2002/95/EC 2011/09/30 2011/07/09 APPROVED BY: [Signature] CHECKED: [Signature] DATE: 2011/07/09	QUALITY SYMBOLS ▽-0 ▽-1	GENERAL TOLERANCES (UNLESS SPECIFIED) 4 PLACES ± 0.1 3 PLACES ± 0.1 2 PLACES ± 0.1 1 PLACE ± 0.2 ANGULAR ± 1°	DIMENSION STYLE MM ONLY	SCALE 2:1	DESIGN UNITS METRIC	THIRD ANGLE PROJECTION ☉	
	DRAWN BY: [Signature] DATE: 20/12/2005	CHECKED BY: [Signature] DATE: 20/12/2005	APPROVED BY: [Signature] DATE: 20/12/2005	MATERIAL NO.	DOCUMENT NO.	TITLE CMC HEADER T3 INTERFACE - BK & BR 96/72 AND 96/96	MOLEX INCORPORATED
	DRAFT WHERE APPLICABLE MUST REMAIN WITHIN DIMENSIONS	SEE TABLE	INCORPORATED AND SHOULD NOT BE USED WITHOUT WRITTEN PERMISSION	SD-36638-001	3 OF 3	SHEET NO.	3 OF 3
	THIS DRAWING CONTAINS INFORMATION THAT IS PROPRIETARY TO MOLEX INCORPORATED AND SHOULD NOT BE USED WITHOUT WRITTEN PERMISSION						