

## Excellent Integrated System Limited

Stocking Distributor

Click to view price, real time Inventory, Delivery & Lifecycle Information:

[Molex Connector Corporation](#)  
[0367570022](#)

For any questions, you can email us directly:

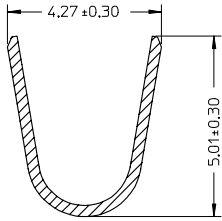
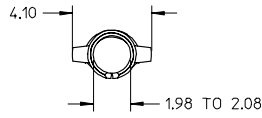
[sales@integrated-circuit.com](mailto:sales@integrated-circuit.com)

10 | 9 | 8 | 7 | 6 | 5 | 4 | 3 | 2 | 36664

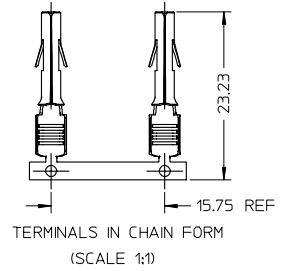
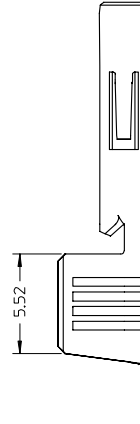
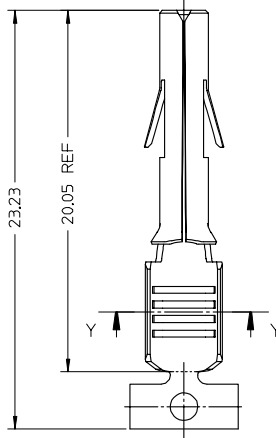
NOTE:

1. MATERIAL : BRASS
2. FINISH : HOT TIN DIP, THICKNESS 0.51 MICROMETER MIN
3. SOCKET TERMINALS FOR USE WITH THE .084/(2.13) SERIES HOUSINGS  
 PLUG (42021-\*\*)  
 CAP (42022-\*\*)
- SOCKET TERMINAL TO MATE WITH PIN TERMINALS OF .084/(2.13) DIA SERIES
4. CRIMP RANGE : SEE CHART
5. PRODUCT SPECIFICATION : PS-36663-001 APPLIES

MATERIAL No.	FINISH	WIRE SIZE	INSULATION DIA	PACKAGING
36664-0001	SEE NOTE 2	10-12AWG	5.08 MAX	REEL
36664-0002	SEE NOTE 2	10-12AWG	5.08 MAX	LOOSE



SECTION Y  
(SCALE 10:1)



EC No: 12005-0004 DRAWN: SSUDHIR 2004/07/07 CHECKED: DGDATHA 2004/07/07 APPR: DGDATHA 2004/07/08	QUALITY SYMBOLS	GENERAL TOLERANCES (UNLESS SPECIFIED) <table border="1"> <thead> <tr> <th></th> <th>mm</th> <th>INCH</th> </tr> </thead> <tbody> <tr> <td>4 PLACES</td> <td>± .005</td> <td>± .0002</td> </tr> <tr> <td>3 PLACES</td> <td>± .008</td> <td>± .0003</td> </tr> <tr> <td>2 PLACES</td> <td>± 0.25</td> <td>± .010</td> </tr> <tr> <td>1 PLACE</td> <td>± 0.38</td> <td>± .015</td> </tr> </tbody> </table> ANGULAR ± 2 ° DRAFT WHERE APPLICABLE MUST REMAIN WITHIN DIMENSIONS		mm	INCH	4 PLACES	± .005	± .0002	3 PLACES	± .008	± .0003	2 PLACES	± 0.25	± .010	1 PLACE	± 0.38	± .015	SCALE 5:1	DESIGN UNITS METRIC	THIRD ANGLE PROJECTION	REVISE ON CAD ONLY
			mm	INCH																	
	4 PLACES		± .005	± .0002																	
	3 PLACES		± .008	± .0003																	
2 PLACES	± 0.25	± .010																			
1 PLACE	± 0.38	± .015																			
<table border="1"> <tr> <th colspan="2">DIMENSION STYLE</th> </tr> <tr> <td>MM ONLY</td> <td></td> </tr> </table>	DIMENSION STYLE		MM ONLY		<table border="1"> <tr> <th>DRAWN BY</th> <th>DATE</th> </tr> <tr> <td>SSUDHIR</td> <td>2004/07/07</td> </tr> <tr> <th>CHECKED BY</th> <th>DATE</th> </tr> <tr> <td>DGDATHA</td> <td>2004/07/07</td> </tr> <tr> <th>APPROVED BY</th> <th>DATE</th> </tr> <tr> <td>DGDATHA</td> <td>2004/07/07</td> </tr> </table>	DRAWN BY	DATE	SSUDHIR	2004/07/07	CHECKED BY	DATE	DGDATHA	2004/07/07	APPROVED BY	DATE	DGDATHA	2004/07/07	<table border="1"> <tr> <th>TITLE</th> </tr> <tr> <td>STAMP PART BRASS TERMINAL SOCKET MLX 10-12AWG 5.08 INS DIA</td> </tr> </table>	TITLE	STAMP PART BRASS TERMINAL SOCKET MLX 10-12AWG 5.08 INS DIA	
DIMENSION STYLE																					
MM ONLY																					
DRAWN BY	DATE																				
SSUDHIR	2004/07/07																				
CHECKED BY	DATE																				
DGDATHA	2004/07/07																				
APPROVED BY	DATE																				
DGDATHA	2004/07/07																				
TITLE																					
STAMP PART BRASS TERMINAL SOCKET MLX 10-12AWG 5.08 INS DIA																					
<table border="1"> <tr> <th>MATERIAL NO.</th> <th>DOCUMENT NO.</th> <th>SHEET NO.</th> </tr> <tr> <td>SEE CHART</td> <td>SD-36664-001</td> <td>1 OF 1</td> </tr> </table>	MATERIAL NO.	DOCUMENT NO.	SHEET NO.	SEE CHART	SD-36664-001	1 OF 1	MOLEX INCORPORATED <small>THIS DRAWING CONTAINS INFORMATION THAT IS PROPRIETARY TO MOLEX INCORPORATED AND SHOULD NOT BE USED WITHOUT WRITTEN PERMISSION</small>														
MATERIAL NO.	DOCUMENT NO.	SHEET NO.																			
SEE CHART	SD-36664-001	1 OF 1																			
1	REV																				

8 | 7 | 6 | 5 | 4 | 3 | 2 | 1