

Excellent Integrated System Limited

Stocking Distributor

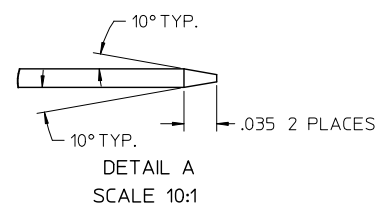
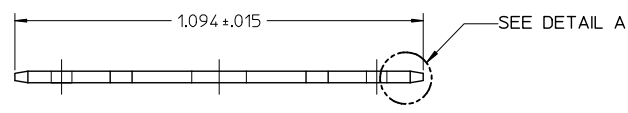
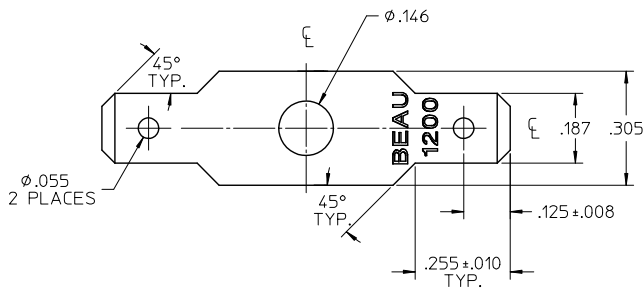
Click to view price, real time Inventory, Delivery & Lifecycle Information:

[Molex Connector Corporation](#)
[0380020073](#)

For any questions, you can email us directly:

sales@integrated-circuit.com

10	9	8	7	6	5	4	3	2	38002
MATERIAL NO.	ENGINEERING NO.	DESCRIPTION	MATERIAL	FINISH					
380020023	1210	TERMINAL, FAST-TAB, FLAT FLAT	BRASS	TIN OVER COPPER PLATED					



NOTES:
1. PART IS ROHS COMPLIANT.

INITIAL RELEASE EC NO: WNA/2009-0426 DRAWN: ENCLAS 2009/02/06 CHECKED: UORK 2009/02/10 APPR: JMACNEIL 2009/02/10 REV A	QUALITY SYMBOLS	GENERAL TOLERANCES (UNLESS SPECIFIED) <table border="1"> <tr> <th></th> <th>mm</th> <th>INCH</th> </tr> <tr> <td>4 PLACES</td> <td>± .005</td> <td>± .0005</td> </tr> <tr> <td>3 PLACES</td> <td>± .005</td> <td>± .0005</td> </tr> <tr> <td>2 PLACES</td> <td>± .01</td> <td>± .001</td> </tr> <tr> <td>1 PLACE</td> <td>± .01</td> <td>± .001</td> </tr> </table> ANGULAR ± 1° DRAFT WHERE APPLICABLE MUST REMAIN WITHIN DIMENSIONS		mm	INCH	4 PLACES	± .005	± .0005	3 PLACES	± .005	± .0005	2 PLACES	± .01	± .001	1 PLACE	± .01	± .001	DIMENSION STYLE INCH ONLY DRAWN BY: H. C. H. DATE: 1972/10/24 CHECKED BY: R. NEFF DATE: 1972/10/24 APPROVED BY: R. NEFF DATE: 1972/10/24	SCALE: 4:1 DESIGN UNITS: INCH THIRD ANGLE PROJECTION	TITLE: TERMINAL, FT, FL FL (CAT# 1210)
			mm	INCH																
	4 PLACES		± .005	± .0005																
	3 PLACES		± .005	± .0005																
2 PLACES	± .01	± .001																		
1 PLACE	± .01	± .001																		
MATERIAL NO. SEE CHART DOCUMENT NO. SD-38002-065	SHEET NO. 1 OF 1																			
THIS DRAWING CONTAINS INFORMATION THAT IS PROPRIETARY TO MOLEX INCORPORATED AND SHOULD NOT BE USED WITHOUT WRITTEN PERMISSION																				