

Excellent Integrated System Limited

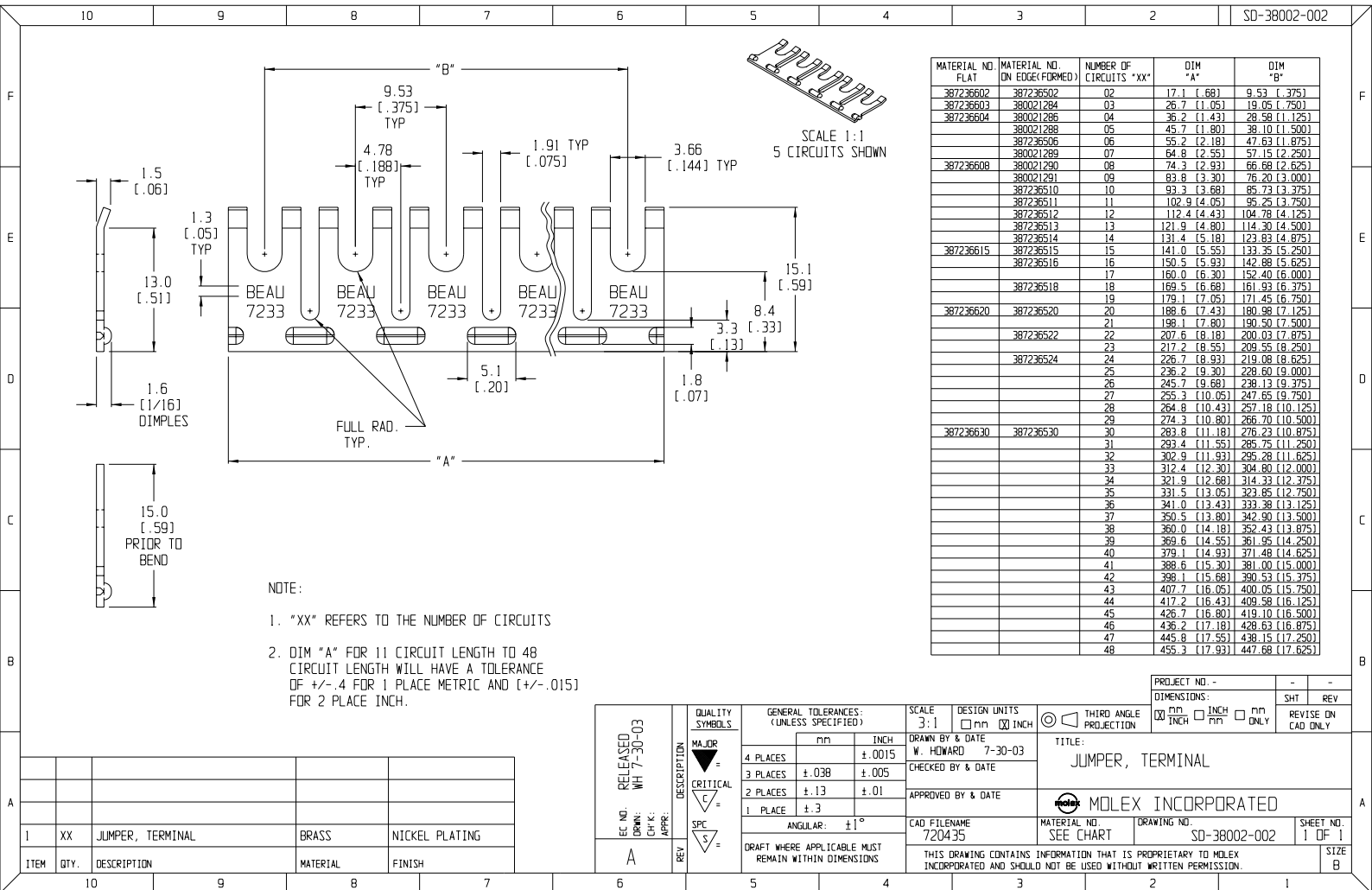
Stocking Distributor

Click to view price, real time Inventory, Delivery & Lifecycle Information:

[Molex Connector Corporation](#)
[0380021340](#)

For any questions, you can email us directly:

sales@integrated-circuit.com



ITEM	QTY.	DESCRIPTION	MATERIAL	FINISH
1	XX	JUMPER, TERMINAL	BRASS	NICKEL PLATING

EC NO. RELEASED WH 7-30-03	DESCRIPTION MAJOR CRITICAL SPC	QUALITY SYMBOLS
CHK: []		
APP: []		
REV: A		

GENERAL TOLERANCES (UNLESS SPECIFIED)	SCALE 3:1	DESIGN UNITS <input type="checkbox"/> mm <input checked="" type="checkbox"/> INCH
4 PLACES ±.0015	DRAWN BY & DATE W. HOWARD 7-30-03	THIRD ANGLE PROJECTION
3 PLACES ±.038 ±.005	CHECKED BY & DATE	
2 PLACES ±.13 ±.01	APPROVED BY & DATE	
1 PLACE ±.3	CAD FILENAME 720435	
ANGULAR: ±1°	THIS DRAWING CONTAINS INFORMATION THAT IS PROPRIETARY TO MOLEX INCORPORATED AND SHOULD NOT BE USED WITHOUT WRITTEN PERMISSION.	

PROJECT NO. -	-	-
DIMENSIONS:	SHT	REV
<input checked="" type="checkbox"/> mm <input type="checkbox"/> INCH	<input type="checkbox"/> mm <input type="checkbox"/> ONLY	REVISE ON CAD ONLY
TITLE: JUMPER, TERMINAL		
MOLEX INCORPORATED		
MATERIAL NO. SEE CHART	DRAWING NO. SD-38002-002	SHEET NO. 1 OF 1
SIZE B		