



**Distributor of Molex Connector Corporation: Excellent Integrated System Limited**  
Datasheet of 0190160039 - Connector Quick Connect Receptacle 14-16 AWG 0.187"  
(4.75mm) Crimp

Contact us: [sales@integrated-circuit.com](mailto:sales@integrated-circuit.com) Website: [www.integrated-circuit.com](http://www.integrated-circuit.com)

---

## **Excellent Integrated System Limited**

Stocking Distributor

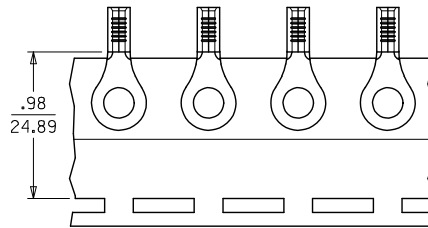
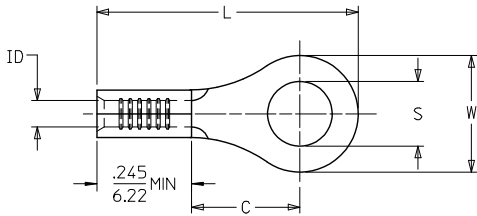
Click to view price, real time Inventory, Delivery & Lifecycle Information:

[Molex Connector Corporation](#)  
[0190160039](#)

For any questions, you can email us directly:  
[sales@integrated-circuit.com](mailto:sales@integrated-circuit.com)

Contact us: sales@integrated-circuit.com Website: www.integrated-circuit.com

10		9		8		7		6		5		4		3		2		19044	
LOOSE PIECE				TAPE MOUNTED				SPECIFICATIONS											
MATERIAL NUMBER	ALTERNATE NUMBER	MATERIAL NUMBER	ALTERNATE NUMBER	STUD SIZE	"S" ±.005/(0.13)	"W" ±.010/(0.25)	"C" MIN.	"L" MAX.	"ID" MIN.	STOCK THICKNESS									
I90440063	A-120-02	I90440001	A-120-02T	2	.094/(2.39)	.225/(5.72)	.157/(3.99)	.563/(14.30)	.062/(1.57)	.028/(.71)									
I90440064	A-120-04	I90440065	A-120-04T	4	.119/(3.02)	.225/(5.72)	.157/(3.99)	.563/(14.30)	.062/(1.57)	.028/(.71)									
I90440066	A-120-06	I90440067	A-120-06T	6	.146/(3.71)	.225/(5.72)	.157/(3.99)	.563/(14.30)	.062/(1.57)	.028/(.71)									
I90440068	A-121-06	I90440003	A-121-06T	6	.146/(3.71)	.312/(7.92)	.270/(6.86)	.720/(18.29)	.062/(1.57)	.028/(.71)									
I90440069	A-121-08	I90440071	A-121-08T	8	.173/(4.39)	.312/(7.92)	.270/(6.86)	.720/(18.29)	.062/(1.57)	.028/(.71)									
I90440072	A-121-10	I90440073	A-121-10T	10	.198/(5.03)	.312/(7.92)	.270/(6.86)	.720/(18.29)	.062/(1.57)	.028/(.71)									
I90440074	A-122-10	I90440004	A-122-10T	10	.198/(5.03)	.467/(11.86)	.386/(9.80)	.914/(23.22)	.062/(1.57)	.028/(.71)									
I90440075	A-122-14	I90440076	A-122-14T	1/4	.265/(6.73) (C2)	.467/(11.86)	.386/(9.80)	.914/(23.22)	.062/(1.57)	.028/(.71)									
I90440077	A-122-56	I90440005	A-122-56T	5/16	.328/(8.33)	.467/(11.86)	.386/(9.80)	.914/(23.22)	.062/(1.57)	.028/(.71)									
I90440078	A-126-10	I90440006	A-126-10T	10	.198/(5.03)	.534/(13.56)	.552/(14.02)	1.113/(28.27)	.054/(1.37)	.031/(.79)									
I90440079	A-126-14	I90440080	A-126-14T	1/4	.265/(6.73) (C2)	.534/(13.56)	.552/(14.02)	1.113/(28.27)	.054/(1.37)	.031/(.79)									
I90440082	A-126-56	I90440008	A-126-56T	5/16	.328/(8.33)	.534/(13.56)	.552/(14.02)	1.113/(28.27)	.054/(1.37)	.031/(.79)									
I90440081	A-126-38	I90440007	A-126-38T	3/8	.390/(9.91)	.534/(13.56)	.552/(14.02)	1.113/(28.27)	.054/(1.37)	.031/(.79)									
I90440083	A-132-04	I90440009	A-132-04T	4	.126/(3.20)	.256/(6.45)	.240/(6.10)	.661/(16.69)	.062/(1.57)	.028/(.71)									
I90440084	A-132-06	I90440085	A-132-06T	6	.146/(3.71)	.256/(6.45)	.240/(6.10)	.661/(16.69)	.062/(1.57)	.028/(.71)									
I90440086	A-132-08	I90440087	A-132-08T	8	.146/(3.71)	.256/(6.45)	.240/(6.10)	.661/(16.69)	.062/(1.57)	.028/(.71)									



PARTS ON TAPE

CUSTOMER DRAWING

- NOTES:  
 1. MATERIAL: COPPER.  
 2. PLATING: ELECTRO-TIN.  
 3. ALL DIMENSIONS IN INCHES/(MM).  
 4. PARTS ARE ROHS COMPLIANT.

CORRECTED 1/4 STUD E.C. NO: IPG2015-1639 DRAWN BY: JASO1 2015/05/01 CHKD: MACNEIL 2015/05/01 APPR: MACNEIL 2015/05/12 REV:	QUALITY SYMBOLS	GENERAL TOLERANCES (UNLESS SPECIFIED)		DIMENSION STYLE		SCALE	DESIGN UNITS	THIRD ANGLE PROJECTION
		mm		IN/MM		---	INCH	RING TONGUE TERMINAL 22-18 AWG KRIMPTITE, 100 SERIES MOLEX INCORPORATED SD-19044-001 1 OF 1
		4 PLACES	± .005	± .005	DRAWN BY	DATE	TITLE	
		3 PLACES	± .005	± .005	CHECKED BY	DATE		
	2 PLACES	± 0.13	± .01	RWD	1999/10/27			
	1 PLACE	± 0.25	± .01	APPROVED BY	DATE			
	ANGULAR ± ---°		MATERIAL NO.		DOCUMENT NO.		SHEET NO.	
	DRAFT WHERE APPLICABLE MUST REMAIN WITHIN DIMENSIONS		SEE CHART		SD-19044-001		1 OF 1	
	THIS DRAWING CONTAINS INFORMATION THAT IS PROPRIETARY TO MOLEX INCORPORATED AND SHOULD NOT BE USED WITHOUT WRITTEN PERMISSION							