

Excellent Integrated System Limited

Stocking Distributor

Click to view price, real time Inventory, Delivery & Lifecycle Information:

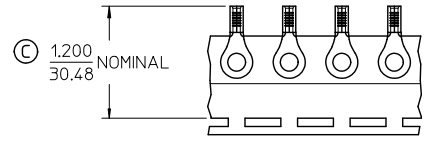
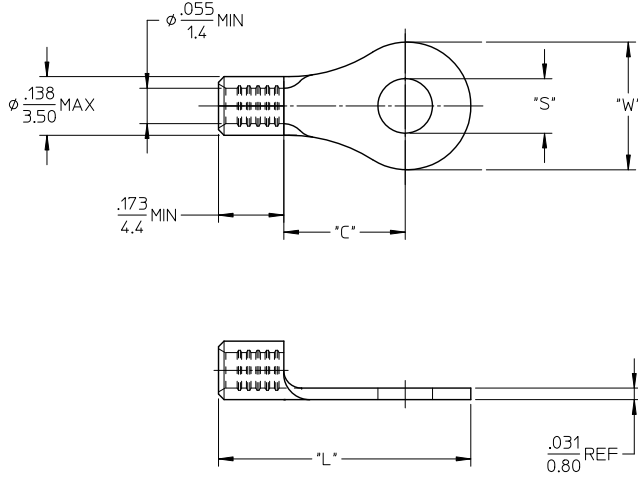
[Molex Connector Corporation](#)
[0190690027](#)

For any questions, you can email us directly:

sales@integrated-circuit.com

10		9		8		7		6		5		4		3		2		19203	
LOOSE PIECE				TAPE MOUNTED				STUD SIZE	DIMENSIONS										
MATERIAL NO.	ENG. NO.	MATERIAL NO.	ENG. NO.	"S" ±.007/0.18	"W" MAX	"C" MIN	"L" MAX												
192030486	A-S-122-14	192030005	A-S-122-14T	1/4"	.256/6.50	.467/11.86	.427/10.85	.894/22.71											
192030483	A-S-132-06	192030011	A-S-132-06T	06	.146/3.71	.270/6.86	.238/6.05	.611/15.52											
192030485	A-S-132-08	192030014	A-S-132-08T	08	.169/4.29	.270/6.86	.238/6.05	.611/15.52											
192030387	A-S-133-10	192030016	A-S-133-10T	10	.209/5.31	.325/8.26	.270/6.86	.666/16.92											

Ⓒ



PARTS ON TAPE

NOTE(S):

1. MATERIAL: STEEL
2. WIRE SIZE: 22-18 AWG (0.25-1.5 MM²)
3. FINISH: NICKEL PLATING
4. PARTS ARE ROHS COMPLIANT.
5. AMBIENT OPERATING TEMPERATURE UP TO 900 °F (483 °C).

TAPE HT. CONSOL. P/MS EC NO: WNA 2010-0619 DRW: WETHRODAHL 2010/04/23 CHKD: JMACNEIL 2010/04/23 APPR: JMACNEIL 2010/06/01	QUALITY SYMBOLS ▽=0 ▽=0	GENERAL TOLERANCES (UNLESS SPECIFIED)		DIMENSION STYLE		SCALE	DESIGN UNITS	THIRD ANGLE PROJECTION	
			mm	INCH	IN/MM		4:1		INCH
		4 PLACES	±---	±---	DRAWN BY	DATE	TITLE		
		3 PLACES	±---	±---	EHILE	2006/09/22	RING TONGUE TERMINAL, 22-18 AWG, KRIMP TITE, 900 DEG F (483 DEG C)		
	2 PLACES	±---	±---	CHECKED BY	DATE	Molex			
	1 PLACE	±---	±---	JMACNEIL	2006/09/22	Molex INCORPORATED			
	ANGULAR ±---		APPROVED BY		DATE	MATERIAL NO.			
	DRAFT WHERE APPLICABLE MUST REMAIN WITHIN DIMENSIONS		JMACNEIL		2006/09/22	DOCUMENT NO.			
			SEE CHART		SD-19203-036		SHEET NO.		
			THIS DRAWING CONTAINS INFORMATION THAT IS PROPRIETARY TO MOLEX INCORPORATED AND SHOULD NOT BE USED WITHOUT WRITTEN PERMISSION				1 OF 1		