

Excellent Integrated System Limited

Stocking Distributor

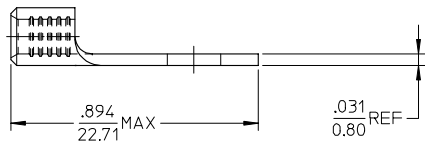
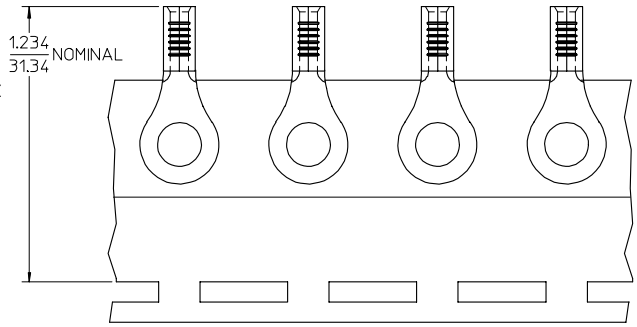
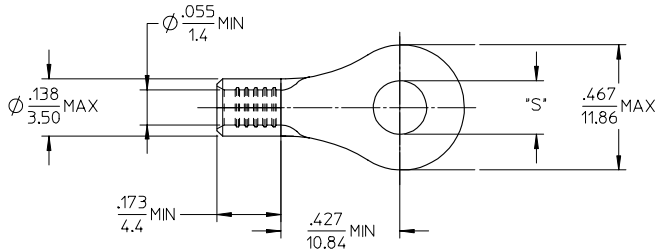
Click to view price, real time Inventory, Delivery & Lifecycle Information:

[Molex Connector Corporation](#)
[0192030487](#)

For any questions, you can email us directly:

sales@integrated-circuit.com

10	9	8	7	6	5	4	3	2	19203
MATERIAL NO.	ENG. NO.	STUD SIZE	*S* MAX	DESCRIPTION					
192030487	A-S-122-56	5/16	.334/8.48	LOOSE					
192030006	A-S-122-56T	5/16	.334/8.48	TAPE					



NOTE(S):

1. MATERIAL: STEEL
2. WIRE SIZE: 22-18 AWG (0.25-1.5 MM²)
3. FINISH: NICKEL PLATING
4. PART IS ROHS COMPLIANT.
5. AMBIENT OPERATING TEMPERATURE UP TO 900 °F (483 °C).

ADDED OPERATING TEMP EC NO: ETC2007-0297 DRWNSHILLE 2007/03/13 CHKCD: JMACNEIL 2007/03/13 APPR: JMACNEIL 2007/03/14	QUALITY SYMBOLS ▽=0 ▽=0	GENERAL TOLERANCES (UNLESS SPECIFIED)		DIMENSION STYLE	SCALE	DESIGN UNITS	THIRD ANGLE PROJECTION	
				IN/MM	4:1	INCH		
		4 PLACES	±---	±---	DRAWN BY	DATE	TITLE	
		3 PLACES	±---	±---	EHILE	2006/09/25	RING TONGUE TERMINAL, 22-18 AWG, KRIMP TITE, 900 DEG F (483 DEG C)	
2 PLACES	±---	±---	CHECKED BY	DATE	MATERIAL NO.		DOCUMENT NO.	
1 PLACE	±---	±---	JMACNEIL	2006/09/25	SD-19203-040		SHEET NO.	
ANGULAR ±---		°	APPROVED BY	DATE	MOLEX INCORPORATED		1 OF 1	
DRAFT WHERE APPLICABLE MUST REMAIN WITHIN DIMENSIONS		SEE CHART		THIS DRAWING CONTAINS INFORMATION THAT IS PROPRIETARY TO MOLEX INCORPORATED AND SHOULD NOT BE USED WITHOUT WRITTEN PERMISSION				