

## Excellent Integrated System Limited

Stocking Distributor

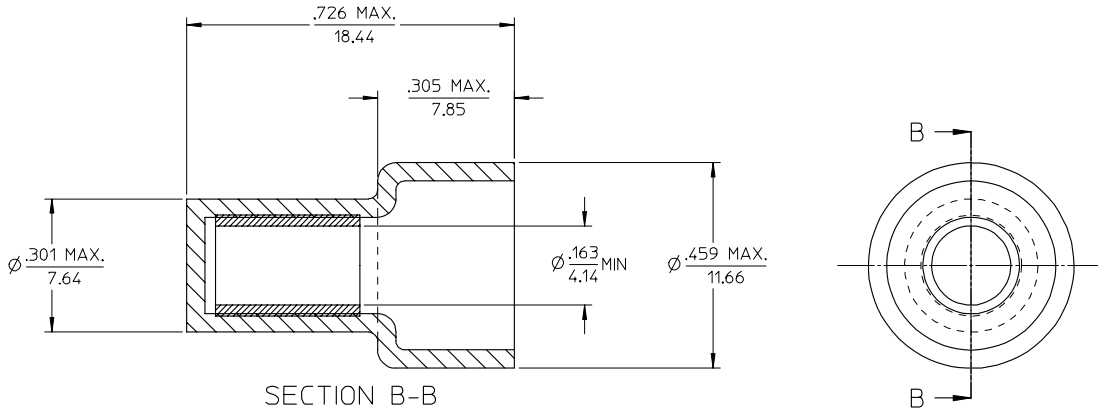
Click to view price, real time Inventory, Delivery & Lifecycle Information:

[Molex Connector Corporation](#)  
[0191600190](#)

For any questions, you can email us directly:

[sales@integrated-circuit.com](mailto:sales@integrated-circuit.com)

10	9	8	7	6	5	4	3	2	19160
MATERIAL NO.	ENG. NO.	DESCRIPTION							
191600190	NC-1810	NC-1810, CLOSED END 18-10 AWG CONNECTOR ASSY.							



SALES DRAWING

EC NO: ETC2003-0287 DRAWN: DMYRIEK 2003/05/02 CHKD: HEB 2003/05/05 APPR: RDEROSS 2003/05/05	QUALITY SYMBOLS -0 .0	GENERAL TOLERANCES (UNLESS SPECIFIED)		SCALE 5:1	DESIGN UNITS INCH	THIRD ANGLE PROJECTION	REVISE ON CAD ONLY	
			mm	INCH	DIMENSION STYLE IN/MM		TITLE CLOSED END CONNECTOR ASSEMBLY, 18-10 AWG	
		4 PLACES ±---	±---		DRAWN BY DLM	DATE 03/04/29	MATERIAL NO. MOLEX INCORPORATED	
		3 PLACES ±---	±.005		CHECKED BY HEB	DATE 03/04/29	DOCUMENT NO. (SEE CHART) SD-19160-008	SHEET NO. 1 OF 1
1 PLACES ±0.13 ±.01			APPROVED BY RWD		DATE 03/04/29	THIS DRAWING CONTAINS INFORMATION THAT IS PROPRIETARY TO MOLEX INCORPORATED AND SHOULD NOT BE USED WITHOUT WRITTEN PERMISSION		
1 PLACES ±0.25 ±---			DRAFT WHERE APPLICABLE MUST REMAIN WITHIN DIMENSIONS					