

## Excellent Integrated System Limited

Stocking Distributor

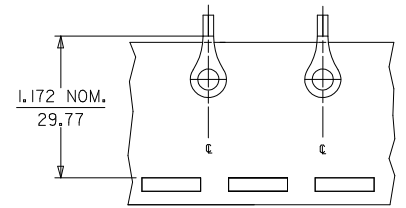
Click to view price, real time Inventory, Delivery & Lifecycle Information:

[Molex Connector Corporation](#)  
[0190690092](#)

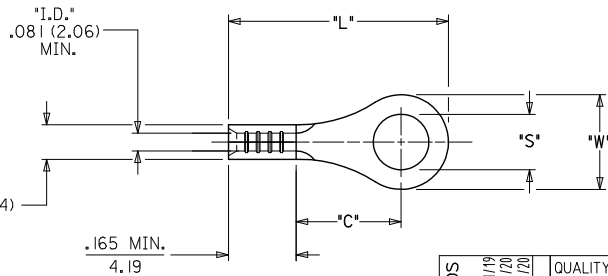
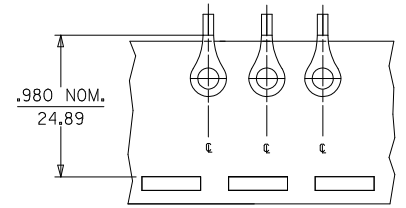
For any questions, you can email us directly:

[sales@integrated-circuit.com](mailto:sales@integrated-circuit.com)

10	9	8	7	6	5	4	3	2	19069
MATERIAL NO. LOOSE PIECE	ENG. NO.	MATERIAL NO. TAPE MOUNTED	ENG. NO.	STUD SIZE	±.003 "S"	"W" MAX.	"C" MIN.	"L" MAX.	
190690091	BB-118-10	-----	-----	10	.198 (5.03)	.544 (13.82)	.535 (13.59)	1.010 (25.65)	
190690092	BB-118-14	190690133	BB-118-14T	14	.265 (6.73)				
190690093	BB-118-38	190690094	BB-118-38T	38 (A)	.390 (9.91)				
190690096	BB-118-56	190690097	BB-118-56T	56 (A)	.328 (8.33)				
190690098	BB-123-02	190690134	BB-123-02T	2	.094 (2.39)	.260 (6.60)	.209 (5.31)	.560 (14.22)	
190690099	BB-123-04	190690100	BB-123-04T	4	.119 (3.02)				
190690101	BB-123-06	190690102	BB-123-06T	6	.146 (3.71)				
190690103	BB-123-08	190690104	BB-123-08T	8	.173 (4.39)				
190690105	BB-125-10	190690106	BB-125-10T	10	.198 (5.03)	.477 (12.11)	.388 (9.86)	.837 (21.26)	
190690107	BB-125-14	190690108	BB-125-14T	14	.265 (6.73)				
190690109	BB-125-56	190690110	BB-125-56T	56	.328 (8.33)				
190690112	BB-137-06	190690113	BB-137-06T	6	.146 (3.71)				
190690114	BB-137-08	190690115	BB-137-08T	8	.173 (4.39)	.322 (8.18)	.275 (6.98)	.645 (16.38)	
190690116	BB-137-10	190690117	BB-137-10T	10	.198 (5.03)				
190690119	BB-139-04	-----	-----	4	.119 (3.02)				
190690120	BB-139-06	190690138	BB-139-06T	6	.146 (3.71)				
190690121	BB-139-08	190690122	BB-139-08T	8	.173 (4.39)	.352 (8.94)	.305 (7.75)	.696 (17.68)	
190690123	BB-139-10	190690124	BB-139-10T	10	.198 (5.03)				



ENG. NO. BB-118-\*\*-\*\* ONLY



- NOTE(S):
- MATERIAL: COPPER (.031/0.79 THICK) PLATING: ELECTROPLATE TIN
  - WIRE SIZE: 16-14 AWG<sup>2</sup> 1.0 - 2.5 MM
  3. PARTS ARE ROHS COMPLIANT.

SALES DRAWING

FIX SWAPPED STUDS EC. NO: WNA2009-0338 DRAWN BY: HRODAHL 2008/11/19 CHKD: MACNEIL 2008/11/20 APPR: MACNEIL 2008/11/20	QUALITY SYMBOLS ▽=0 ▽=0	GENERAL TOLERANCES (UNLESS SPECIFIED)		DIMENSION STYLE		SCALE	DESIGN UNITS	THIRD ANGLE PROJECTION	
				IN/MM		---	INCH	☉	
		4 PLACES ±---	±---	DRAWN BY	DATE	TITLE			
		3 PLACES ±---	±.005	DLM	2003/02/21	RING TONGUE TERMINAL KRIMP TITE 16-14 AWG			
2 PLACES ±0.13	±.01	CHECKED BY	DATE	MATERIAL NO.		DOCUMENT NO.			
1 PLACE ±0.25	±---	SB	2003/02/21	RWD		Molex MOLEX INCORPORATED			
ANGULAR ±---		APPROVED BY		DATE	SD-19069-013		SHEET NO.		
		RWD		2003/02/21	SEE CHART		1 OF 1		
DRAFT WHERE APPLICABLE MUST REMAIN WITHIN DIMENSIONS		MATERIAL NO.		SEE CHART		THIS DRAWING CONTAINS INFORMATION THAT IS PROPRIETARY TO MOLEX INCORPORATED AND SHOULD NOT BE USED WITHOUT WRITTEN PERMISSION			
REV		A1		SIZE		B			