



Distributor of Molex Connector Corporation: Excellent Integrated System Limited
Datasheet of 0190220118 - Connector Quick Connect Tab 10-12 AWG 0.250" (6.35mm) Crimp

Contact us: sales@integrated-circuit.com Website: www.integrated-circuit.com

Excellent Integrated System Limited

Stocking Distributor

Click to view price, real time Inventory, Delivery & Lifecycle Information:

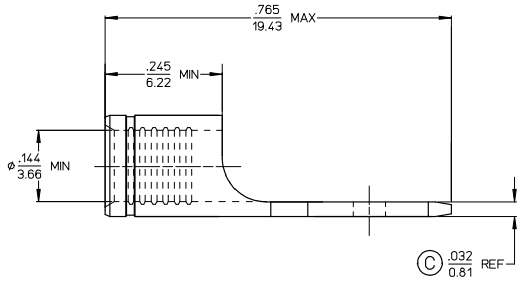
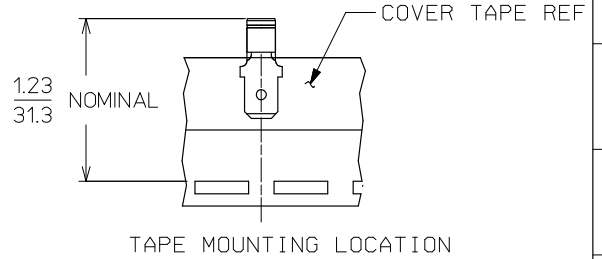
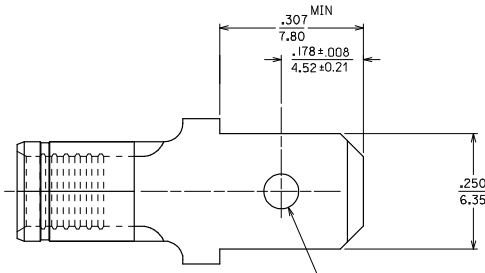
[Molex Connector Corporation](#)
[0190220118](#)

For any questions, you can email us directly:

sales@integrated-circuit.com

Contact us: sales@integrated-circuit.com Website: www.integrated-circuit.com

MATERIAL NUMBER	ENGINEERING NUMBER	DESCRIPTION
190220015	CMCT-1	ZINC CHROMATE PLATED
190220017	CMCT-1T	ZINC CHROMATE PLATED, TAPE MOUNTED



SALES DRAWING

- NOTES:
- MATERIAL: BRASS
 - FINISH: SEE CHART
 - WIRE SIZE: 12-10 AWG (3.09 - 5.01 mm²)
 - TAB DIMENSIONS CONFORM TO UL310 SPECIFICATIONS.
 - PART IS ROHS COMPLIANT.

CHANGED MATL & FINISH EIC NO: ETCZ007-0081 2008/01/28 DRW:MEHLE CHKD:JMCNEIL 2008/01/28 APPR:JMCNEIL 2008/02/13	QUALITY SYMBOLS ▽=0 ▽=0	GENERAL TOLERANCES (UNLESS SPECIFIED)		DIMENSION STYLE IN/MM		SCALE 4:1	DESIGN UNITS INCH	THIRD ANGLE PROJECTION		
		4 PLACES ± --- ± ---	3 PLACES ± --- ± .005	2 PLACES ± 0.13 ± .01	1 PLACE ± 0.25 ± ---	mm	INCH	DRAWN BY MTS DATE 1985/02/20	TITLE MALE CONNECTOR TERMINAL 250 X .032 TAB KRIMPTITE, 12-10 AWG	
		ANGULAR ± 1/2°		DRAFT WHERE APPLICABLE MUST REMAIN WITHIN DIMENSIONS		SEE CHART		APPROVED BY GZ DATE 1985/02/20	MATERIAL NO. SD-19022-012	SHEET NO. 1 OF 1
		THIS DRAWING CONTAINS INFORMATION THAT IS PROPRIETARY TO MOLEX INCORPORATED AND SHOULD NOT BE USED WITHOUT WRITTEN PERMISSION								