

## Excellent Integrated System Limited

Stocking Distributor

Click to view price, real time Inventory, Delivery & Lifecycle Information:

[Molex Connector Corporation](#)  
[0191470087](#)

For any questions, you can email us directly:

[sales@integrated-circuit.com](mailto:sales@integrated-circuit.com)



**NOTES:**

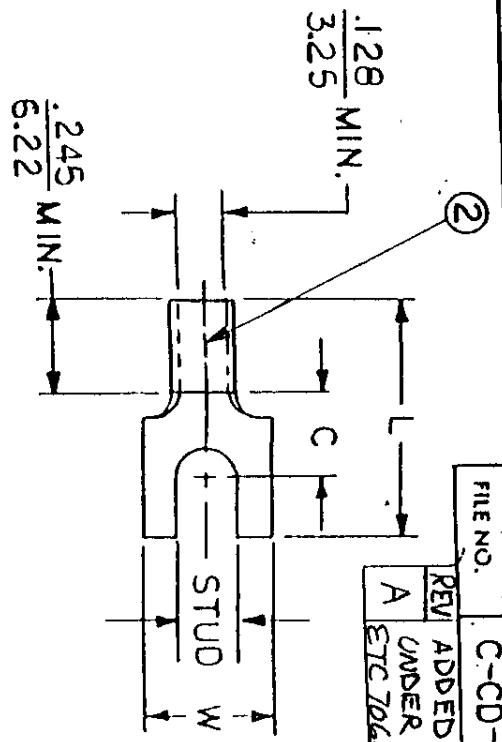
- ① MAT'L: COPPER (STOCK TKN.  $\frac{.040}{.102}$ )  
 PLATING: ELECTRO-TIN (.0003 MIN.)
- ② BRAZED SEAM

STUD SIZES: ( $\pm .005$ )

- 02 = .094
- 04 = .119
- 06 = .146
- 08 = .173
- 10 = .198
- 14 = .265
- 56 = .328
- 38 = .390

"UL" LISTING # E32244  
 "CSA" LISTING # 18689

ALL DIMENSIONS =  $\frac{\text{INCHES}}{\text{M.M}}$



FILE NO. C-CD-303-01

REV	ADDED 08, 10 TO CHART UNDER PART # 3105
A	ETC 70688 1/31: EDB

WIRE SIZE: 12-10 AWG  
 40-60 MM<sup>2</sup>

PART NUMBER	"W" ±.010	"C" MIN.	"L" MAX.	AVAILABLE STUD SIZES	DIMENSIONAL TOLERANCES UNLESS OTHERWISE SPECIFIED		SCALE: NTS	DATE	TITLE	DWG. NO.	CUSTOMER DWG.
					FRACTION	DECIMAL					
C-3102	$\frac{.415}{.1041}$	$\frac{.305}{.775}$	$\frac{.784}{.19.91}$	08				11-28-84	SPADE TONGUE TERMINAL	A	
C-3105	$\frac{.320}{.813}$	$\frac{.505}{.7.75}$	$\frac{.784}{.19.91}$	06, 08, 10				11-30-84	VERSAKRIMP 300-SERIES	A	



CUSTOMER DWG.