



Distributor of Molex Connector Corporation: Excellent Integrated System Limited
Datasheet of 0190020046 - Connector Quick Connect Receptacle 10-12 AWG 0.250"
(6.35mm) Crimp

Contact us: sales@integrated-circuit.com Website: www.integrated-circuit.com

Excellent Integrated System Limited

Stocking Distributor

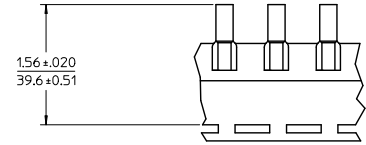
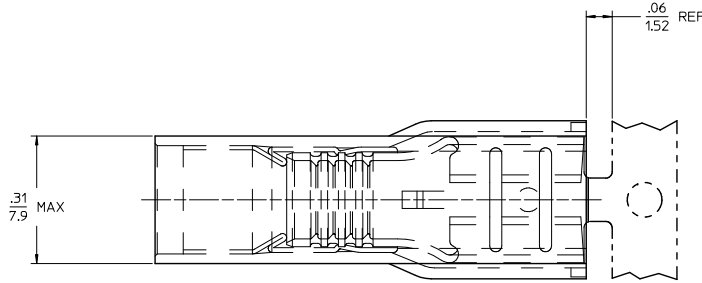
Click to view price, real time Inventory, Delivery & Lifecycle Information:

[Molex Connector Corporation](#)
[0190020046](#)

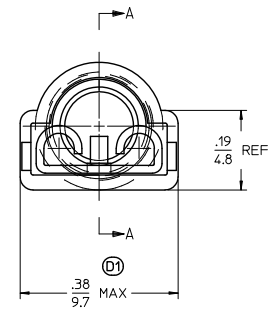
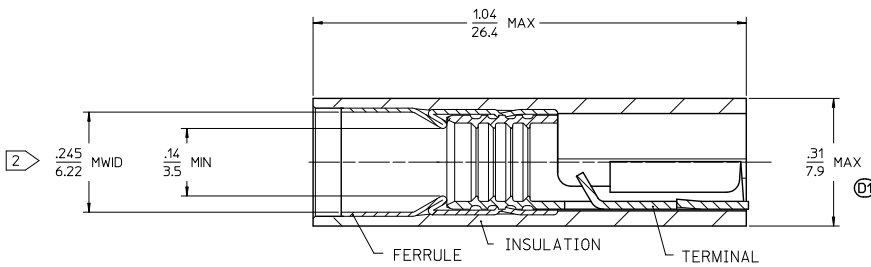
For any questions, you can email us directly:
sales@integrated-circuit.com

MATERIAL NUMBER 190020044	ENGINEERING NUMBER C-5265	MATERIAL NUMBER 190020046	ENGINEERING NUMBER C-5265Z	MATERIAL NUMBER 190020045	ENGINEERING NUMBER C-5265T	WIRE SIZE 12-10 AWG /2.7-6.6 mm ²	ACCEPTS TAB SIZE .250 X.032 /6.35 X 0.81
------------------------------	------------------------------	------------------------------	-------------------------------	------------------------------	-------------------------------	---	---

Contact Us Sales@integrated-circuit.com Website www.integrated-circuit.com



PARTS ON TAPE



SALES DRAWING

NOTES:

- MATERIAL: TERMINAL BRASS .018/0.46 THK REF.
TERMINAL PLATING: ELECTRO TIN
FERRULE: BRASS
FERRULE PLATING: ELECTRO TIN
INSULATION: NYLON 94V2 COLOR YELLOW.
- MWID = MAXIMUM WIRE INSULATION DIAMETER
- PART IS RoHS COMPLIANT

ADD DIMS. RMV 19606 EC NO: VINA2011-0456 DRAWN: THRODAHL 2/11/03/08 CHKD: MALONEIL 2/11/03/08 APPR: MALONEIL 2/11/07/05	QUALITY SYMBOLS ▽=0 ▽=0	GENERAL TOLERANCES (UNLESS SPECIFIED)		DIMENSION STYLE IN/MM		SCALE ---	DESIGN UNITS INCH	THIRD ANGLE PROJECTION
		4 PLACES ± --- ± ---	3 PLACES ± --- ± .005	2 PLACES ± 0.13 ± .01	1 PLACE ± 0.25 ± ---	ANGULAR ± 1/2°	DRAWN BY BENDERLE	DATE 2005/04/15
DRAFT WHERE APPLICABLE MUST REMAIN WITHIN DIMENSIONS		SEE CHART		MATERIAL NO.		DOCUMENT NO.		SHEET NO.
						SD-19002-005		1 OF 1
THIS DRAWING CONTAINS INFORMATION THAT IS PROPRIETARY TO MOLEX INCORPORATED AND SHOULD NOT BE USED WITHOUT WRITTEN PERMISSION								