



Distributor of ITT Cannon, LLC: Excellent Integrated System Limited

Datasheet of CA06R14S-2SA206 - CONN PLUG 4POS INLINE W/SKTS

Contact us: sales@integrated-circuit.com Website: www.integrated-circuit.com

Excellent Integrated System Limited

Stocking Distributor

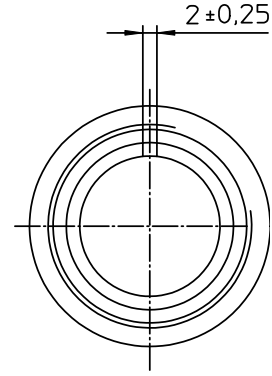
Click to view price, real time Inventory, Delivery & Lifecycle Information:

[ITT Cannon, LLC](#)

[CA06R14S-2SA206](#)

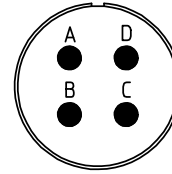
For any questions, you can email us directly:

sales@integrated-circuit.com





| NO. | MASSE / DIMENSION |
|-----|-------------------|
| A | 28.8 |
| B | 7/8-20UNEF-2B |
| C1 | 9.1 |
| C2 | - |
| D | 55 |

| NO. | BESCHREIBUNG / DESCRIPTION |
|-----|---|
| 2 | ISOLIERKÖRPER BUCHSE / INSULATOR SOCKET |
| 3 | DICHTKÖRPER / GROMMET |
| 4 | ENDRING / ENDRING |
| 6 | KONTAKTBÜCHSE / CONTACT SOCKET |
| 7 | ZYLINDERGHÄUSE / BARREL |
| 9 | ÜBERWURFMUTTER / COUPLING NUT |
| 10 | DICHTRING FRONT / FRONT SEALING RING |
| 12 | ENDGEHÄUSE / ENDBELL |



Note: Due to an automatic nomenclature system, numbers generated may not be sequential.
Specification and Dimensions subject to change
Drawings illustrate normal insulator positioning

| Material Specification: | |
|-------------------------|--------------------------------|
| Shell Material: | Aluminium alloy |
| Shell Plating: | Black Zinc Cobalt (conductive) |
| Insulator Material: | Neoprene |
| Contact Material: | Copper alloy |
| Contact Plating: | Hard silver |

| all dimensions are in mm Dimensions without tolerance indications are general tolerances in acc. with DIN7168m | | drawing for CUSTOMER |
|---|--|---|
|  ITT Engineered for life <small>ITT CANNON GmbH D-71334 Weinstadt, Germany</small> | description | CA06R14S-2S-A206 |
| | | Plug, straight Endbell with cable clamp Solder Cup / Socket / Layout: 14S-2 |
| <small>© All rights reserved. Reproduction or issue in third in any form whenever is only permitted with written authorization of ITT Cannon</small> |  page 1/1 | revision 377.3, Jul 16 |