

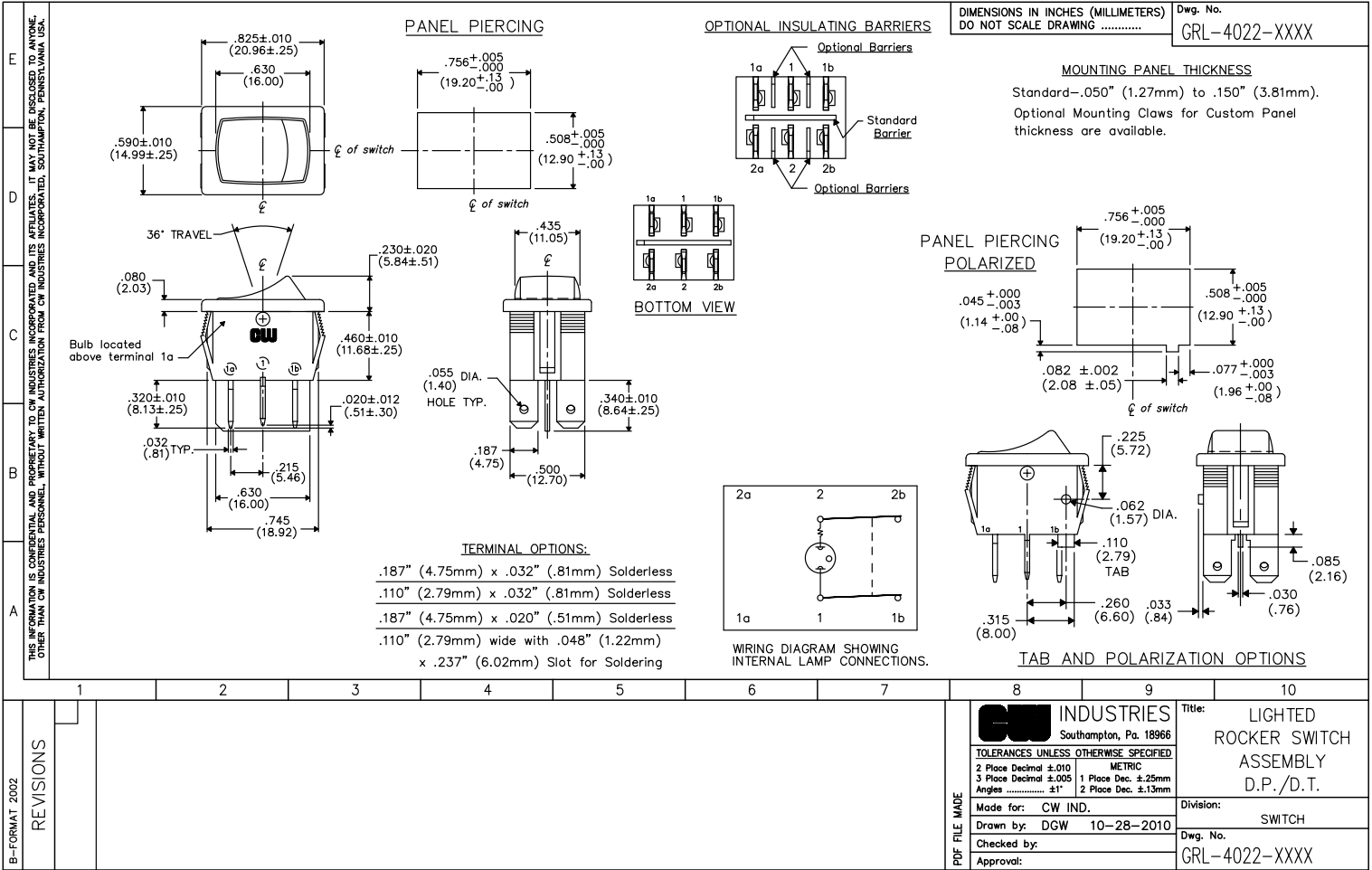
Excellent Integrated System Limited

Stocking Distributor

Click to view price, real time Inventory, Delivery & Lifecycle Information:

[CW Industries](#)
[GRL-4022-0000](#)

For any questions, you can email us directly:
sales@integrated-circuit.com



B-FORMAT 2002
 REVISIONS

PDF FILE MADE	CW INDUSTRIES Southampton, Pa. 18966	Title: LIGHTED ROCKER SWITCH ASSEMBLY D.P./D.T.
	TOLERANCES UNLESS OTHERWISE SPECIFIED 2 Place Decimal ±.010 METRIC 3 Place Decimal ±.005 1 Place Dec. ±.25mm Angles ±1' 2 Place Dec. ±.13mm	Division: SWITCH
	Made for: CW IND. Drawn by: DGW 10-28-2010	Dwg. No. GRL-4022-XXXX
	Checked by: Approval:	