



Distributor of Molex Connector Corporation: Excellent Integrated System Limited

Datasheet of 1301060152 - STRNGLITE 241' 12-3 60 48' LEAD

Contact us: sales@integrated-circuit.com Website: www.integrated-circuit.com

Excellent Integrated System Limited

Stocking Distributor

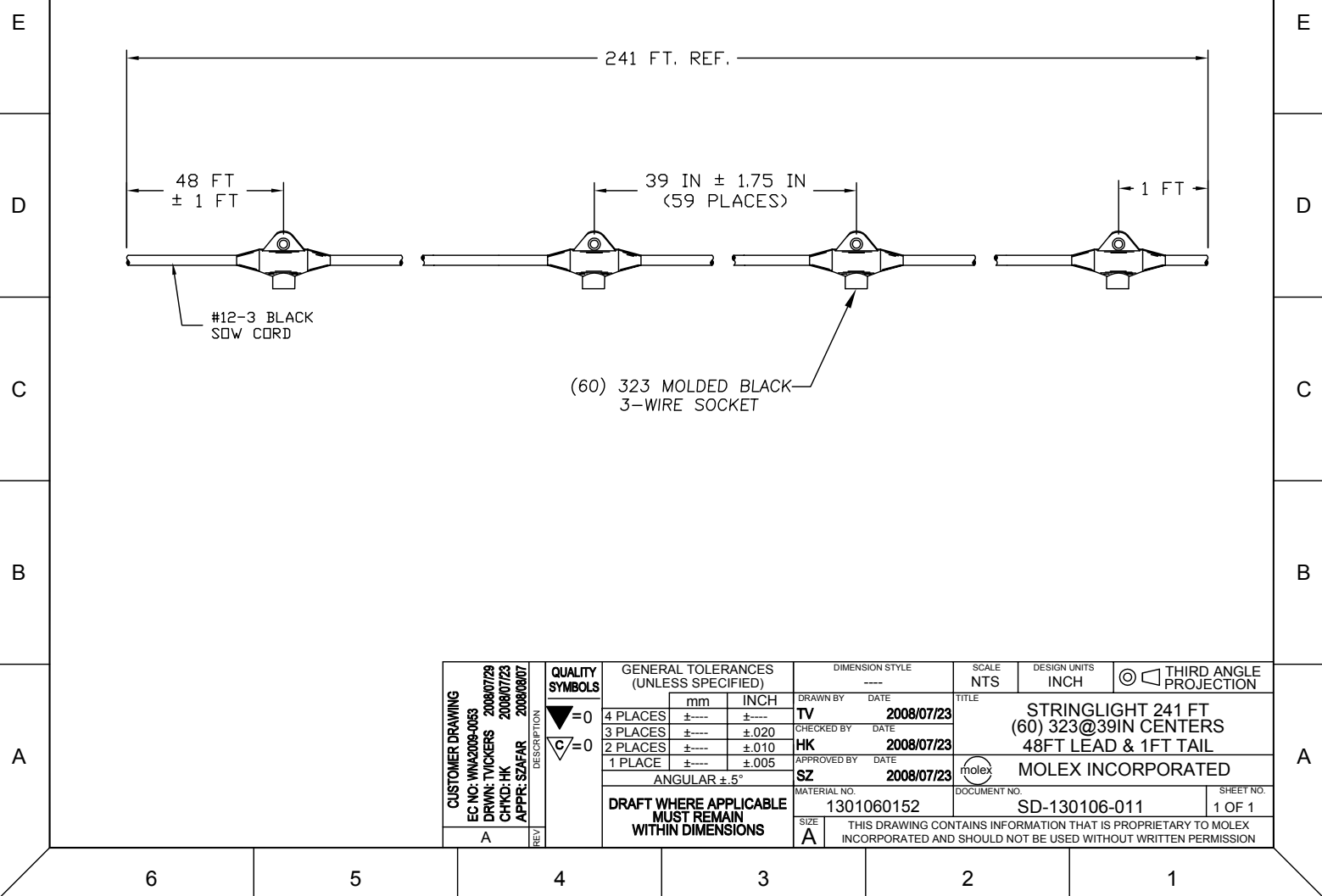
Click to view price, real time Inventory, Delivery & Lifecycle Information:

[Molex Connector Corporation](#)

[1301060152](#)

For any questions, you can email us directly:

sales@integrated-circuit.com



| | | | | | | | | | |
|------------------------------------------------------------------------------------------------------------------------------------------|--------------------------------------|----------------------------------------------|----------------------|-------------------------------------------------------------|-----------------------------------|--------------------------------------|----------------------------|-------------------------------------------------------------------------------------------------------------------------------|--|
| CUSTOMER DRAWING EC NO: WNA2009-0053 DRWIN: TVICKERS 2008/07/29 CHKD: HK 2008/07/23 APPR: SZAFAR 2008/08/07 REV: A | QUALITY SYMBOLS ▽=0 C=0 | GENERAL TOLERANCES (UNLESS SPECIFIED) | | DIMENSION STYLE ---- | SCALE NTS | DESIGN UNITS INCH | THIRD ANGLE PROJECTION | | |
| | | 4 PLACES ±---- ±---- | 3 PLACES ±---- ±.020 | 2 PLACES ±---- ±.010 | 1 PLACE ±---- ±.005 | DRAWN BY TV | DATE 2008/07/23 | TITLE STRINGLIGHT 241 FT (60) 323@39IN CENTERS 48FT LEAD & 1FT TAIL | |
| | | ANGULAR ±.5° | | DRAFT WHERE APPLICABLE MUST REMAIN WITHIN DIMENSIONS | | CHECKED BY HK | DATE 2008/07/23 | MOLEX INCORPORATED | |
| | | APPROVED BY SZ | | DATE 2008/07/23 | MATERIAL NO. 1301060152 | DOCUMENT NO. SD-130106-011 | SHEET NO. 1 OF 1 | THIS DRAWING CONTAINS INFORMATION THAT IS PROPRIETARY TO MOLEX INCORPORATED AND SHOULD NOT BE USED WITHOUT WRITTEN PERMISSION | |