

## Excellent Integrated System Limited

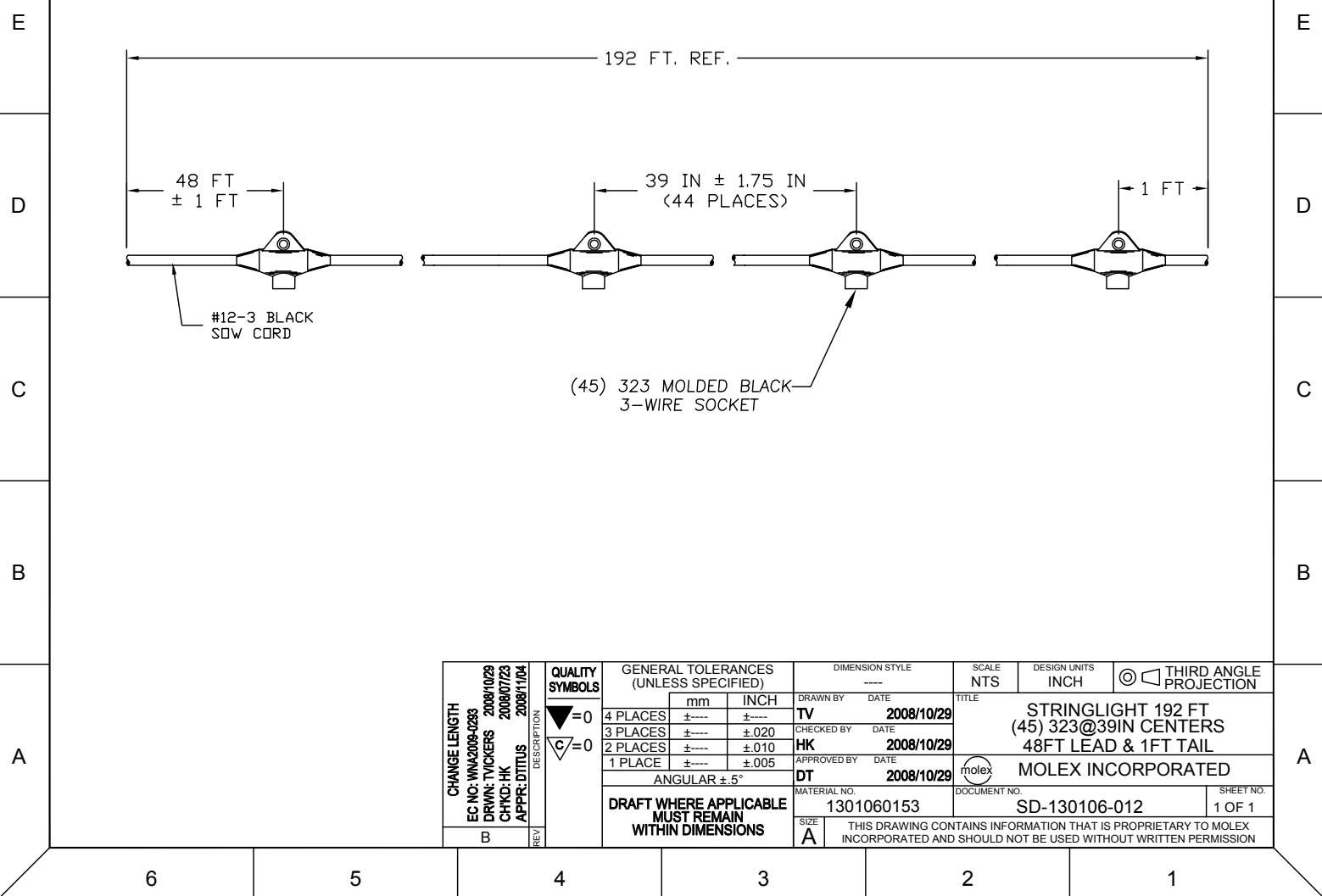
Stocking Distributor

Click to view price, real time Inventory, Delivery & Lifecycle Information:

[Molex Connector Corporation](#)  
[1301060153](#)

For any questions, you can email us directly:

[sales@integrated-circuit.com](mailto:sales@integrated-circuit.com)



CHANGE LENGTH EC NO: WNA2009-0283 DRWIN: TVICKERS 2008/10/29 CHKD: HK 2008/07/23 APPR: DTTJUS 2008/11/04	DESCRIPTION B	REV	<b>QUALITY SYMBOLS</b> ▽=0 C=0	GENERAL TOLERANCES (UNLESS SPECIFIED)		DIMENSION STYLE ----	SCALE NTS	DESIGN UNITS INCH	THIRD ANGLE PROJECTION			
				4 PLACES ±---- ±----	mm INCH	DRAWN BY TV	DATE 2008/10/29	TITLE STRINGLIGHT 192 FT (45) 323@39IN CENTERS 48FT LEAD & 1FT TAIL				
				3 PLACES ±---- ±.020	INCH	CHECKED BY HK	DATE 2008/10/29					
				2 PLACES ±---- ±.010	INCH	APPROVED BY DT	DATE 2008/10/29	MOLEX INCORPORATED DOCUMENT NO. SD-130106-012 SHEET NO. 1 OF 1				
1 PLACE ±---- ±.005	INCH	MATERIAL NO. 1301060153										
DRAFT WHERE APPLICABLE MUST REMAIN WITHIN DIMENSIONS				ANGULAR ±.5°		THIS DRAWING CONTAINS INFORMATION THAT IS PROPRIETARY TO MOLEX INCORPORATED AND SHOULD NOT BE USED WITHOUT WRITTEN PERMISSION						