

Excellent Integrated System Limited

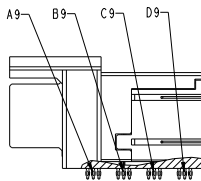
Stocking Distributor

Click to view price, real time Inventory, Delivery & Lifecycle Information:

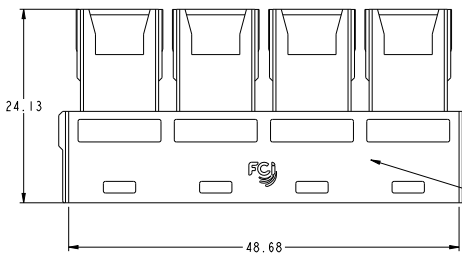
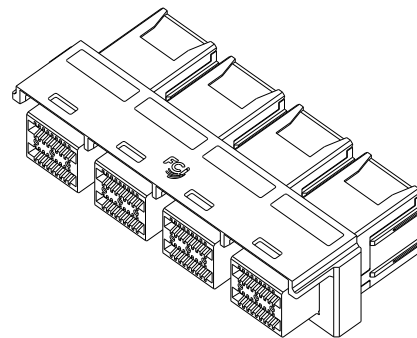
[FCI](#)
[10112634-101LF](#)

For any questions, you can email us directly:
sales@integrated-circuit.com

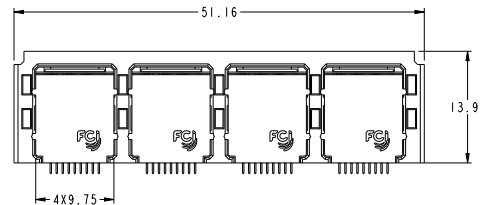
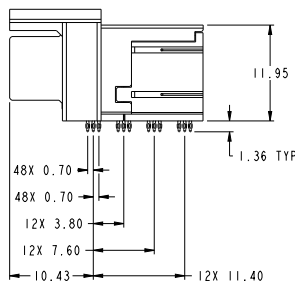
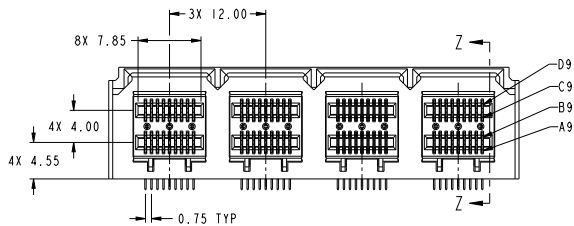
PRODUCT NUMBER	PLATING OPT.	HSG&FRAME COLOR
10112634-101	OPTION 1	BLACK
10112634-101LF	OPTION 2	BLACK
10112634-121	OPTION 1	NATURAL
10112634-121LF	OPTION 2	NATURAL



SECTION Z-Z



FCI P/N AND DATE CODE ON THIS SURFACE



NOTES:

- MATERIALS:
CONNECTOR HOUSING: HIGH TEMPERATURE THERMOPLASTIC, GLASS FILLED, UL 94V-0
TERMINALS: COPPER ALLOY
- FINISHES:
CONTACT AREA: 0.76µm GOLD OVER 2.54µm MIN NICKEL
TAIL AREA:
OPTION 1: 0.76µm - 1.52µm TIN/LEAD (90/10) OVER 2.54µm MIN NICKEL.
OPTION 2: 0.76µm - 1.52µm TIN (LEAD FREE) OVER 2.54µm MIN NICKEL.
- PRODUCT SPECIFICATION: GS-12-650.
APPLICATION SPECIFICATION: GS-20-0356
PACKAGING SPECIFICATION: GS-14-1490
- RECOMMENDED MOUNTING HARDWARE:
OPTION 1: M2 X 0.91mm SELF-THREADING SCREW
OPTION 2: M2 X 0.80mm SELF-THREADING SCREW
OPTION 3: M2 X 0.40mm SELF-THREADING SCREW
RECOMMENDED MOUNTING SCREW LENGTH: PCB THICKNESS + (2.5±0.35)mm
- THIS CONNECTOR IS DESIGNED TO MEET THE REQUIREMENTS OF INDUSTRY SPECIFICATION SFF-8643.
- A Δ SYMBOL WILL BE NEXT TO ANY DIMENSION, VIEW, OR NOTE THAT HAS BEEN MODIFIED WITH THE CURRENT DRAWING REVISION.

MATES WITH MINI-SAS HD ENDS IN:
10119217 SERIES (4i)
10119312 SERIES (4i)
10120086 SERIES (4i)
10120087 SERIES (4i)
10119576 SERIES (8i)
10119577 SERIES (8i)
10120088 SERIES (8i)
10120089 SERIES (8i)

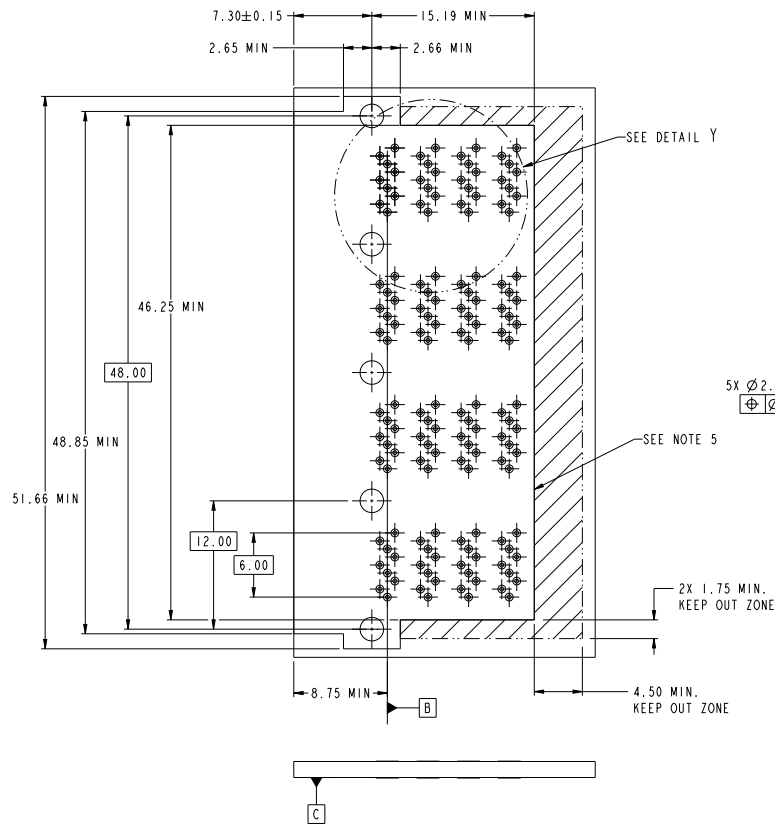
spec.ref	-	dr	hsh/ky	ap/00100	projection	MM	size	A2	scale	3:1
tolerance std	ASME Y14.5	eng	shen/ky	ap/00100	product family	MINI-SAS HD	acc no	10112634	rel level	Released
surface	linear	0.1	±0.25	FCI	1X4 INTERNAL ASSEMBLY		deg	10112634	rev	C
ASME Y14.5	angular	0.1X	±0.15	www.fci.com	MINI-SAS HD		Product - Customer Draw	sheet 1 of 4		

PDS: Rev :C

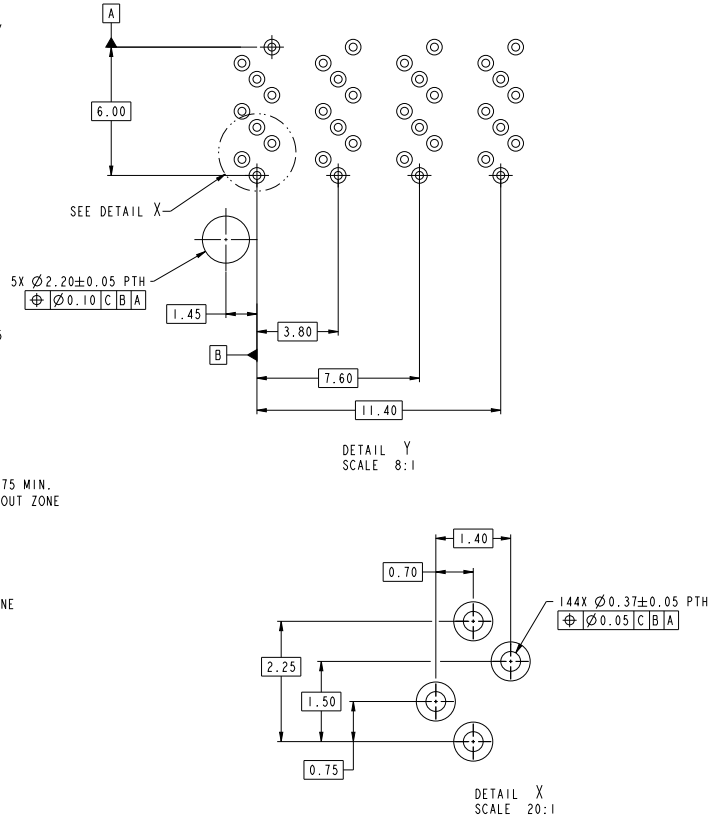
STATUS: Released

Printed: Dec 23, 2015

Copyright FCI



RECOMMENDED PC BOARD LAYOUT



NOTES:

1. RECOMMENDED DRILL SIZE FOR A Ø0.37 FINISHED PTH IS Ø0.457 (#77 DRILL).
2. RECOMMENDED ANNULAR RING AROUND Ø0.37 FINISHED PTH IS Ø0.73.
3. MINIMUM RECOMMENDED SPACING : 14.00mm.
4. MINIMUM PCB THICKNESS : 1.57mm.
5. CONNECTOR KEEP OUT AREA.

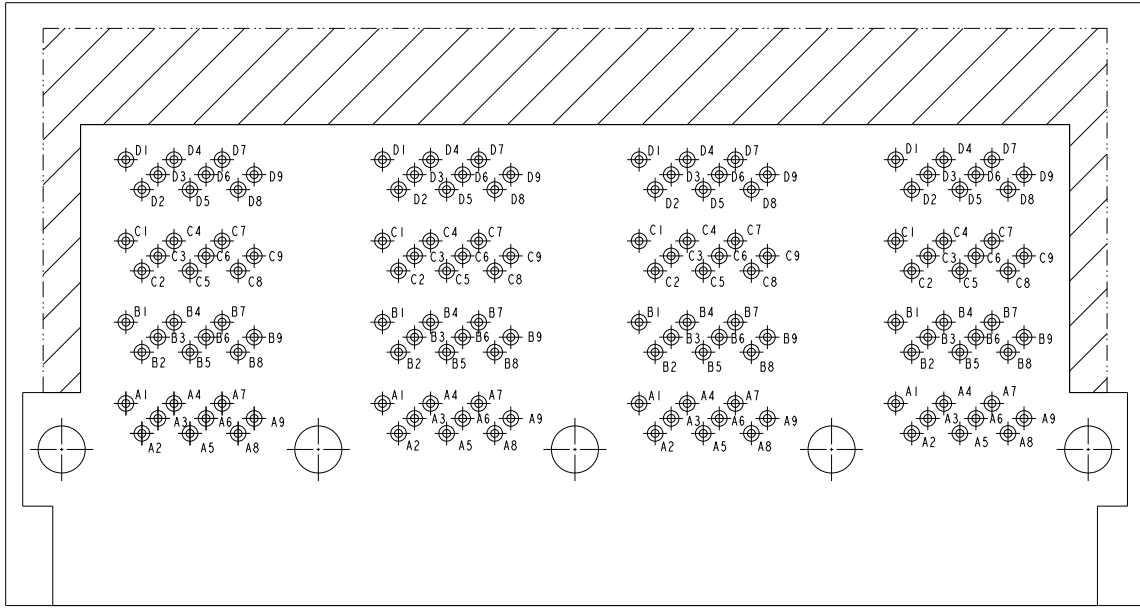
spec. ref.	-	dr.	hsh/kyw	ap/00000	projection	MM	size	A2	scale	2:1
tolerance std	ASME Y14.5	TOLERANCES UNLESS OTHERWISE SPECIFIED	eng	shen/lin	0000000		acc no	00000000		
surface	linear	0.1 ±0.25 0.2X ±0.15 0.2X ±	chf	shen/lin	0000000	product family	MINI-SAS HD	rel level	Released	rev
ASME Y14.5	angular	0° ±1/2°	appr	shen/kyw	0000000					C
					1X4 INTERNAL ASSEMBLY MINI-SAS HD		part no	10112634		
			www.fci.com		cat. no.		Product - Customer Draw			sheet 2 of 4

PDS: Rev :C

STATUS: Released

Printed: Dec 23, 2015

PIN OUT DESIGNATIONS



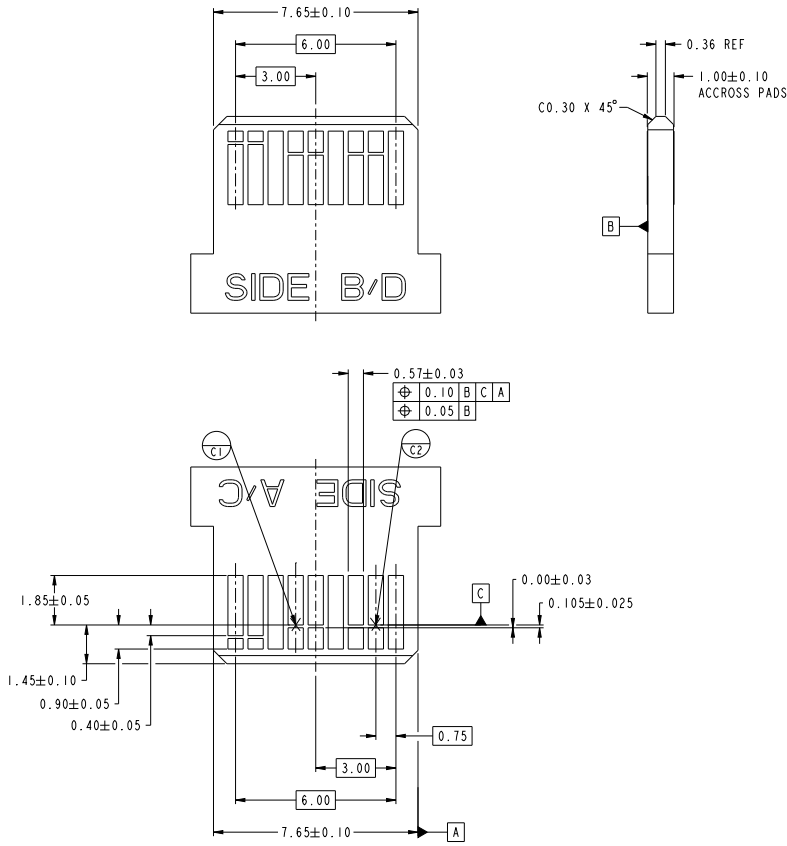
Copyright FCI

spec. ref.	-	dr.	hsh/duy	april/2015	projection	MM	size	A2	scale	2:1
tolerance std	ASME Y14.5	eng	shen/lin	april/2015	1st angle		acc. no.	NA0000000		
TOLERANCES UNLESS OTHERWISE SPECIFIED		appr	wei/mg/zheng	april/2015	product family	MINI-SAS HD	rel. level	Released		
surface	linear	0.1	±0.25		1X4 INTERNAL ASSEMBLY		10112634	C	rev	C
	angular	0.2X	±0.15		MINI-SAS HD					
ASME Y14.5		0°	±1/2°	www.fci.com	cat. no.	-	Product	Customer Draw	sheet 3 of 4	

PDS: rev :C

STATUS: Released

Printed: Dec 23, 2015



NOTES:

- 0.05 MINIMUM KEEP OUT SOLDER MASK AROUND ALL PADS.
- DATUM C TARGETS ARE DEFINED BY THE RESPECTIVE PAD CENTER LINES AND THE LEADING EDGE OF THE TARGET PADS.

spec. ref.	-	dr.	hsh/duy	date	20150808	projection	MM	size	A2	scale	2:1
tolerance std	ASME Y14.5	eng	shih/duy	date	20150808	acc. no.		rel. level	Released		
	TOLERANCES UNLESS OTHERWISE SPECIFIED	chr	shih/duy	date	20150808	product family	MINI-SAS HD				
		oppr	shih/duy	date	20150808						
surface	linear	0.1	±0.25			1X4 INTERNAL ASSEMBLY		10112634		rev C	
	angular	0.1XX	±0.15								
		0.1XX	±	www.fci.com		Product - Customer Draw		sheet 4 of 4			

PDS: Rev :C

STATUS: Released

Printed: Dec 23, 2015