

Excellent Integrated System Limited

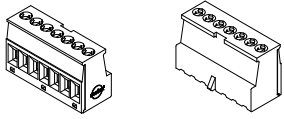
Stocking Distributor

Click to view price, real time Inventory, Delivery & Lifecycle Information:

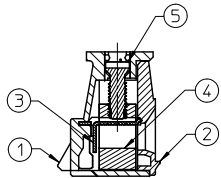
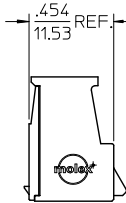
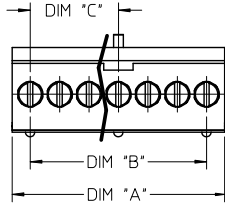
[Molex Connector Corporation](#)
[0394840005](#)

For any questions, you can email us directly:

sales@integrated-circuit.com



REF. P/N 394840007 SHOWN



SECTION Z-Z

NOTES:

1. MATERIALS: SEE CHART.
 2. FINISHES: SEE CHART.
 3. PRODUCT SPECIFICATION: PS-39484-001
 4. PACKAGING SPECIFICATION: PK-39482-001
 5. MATES WITH TIN PLATED SERIES 39485 HEADER ASSEMBLIES.
 6. ALL DIMENSIONS ARE REFERENCE.
 7. ASSEMBLY IS ROHS COMPLIANT BY EXEMPTION.
- COMPONENTS MARKED WITH AN ASTERISK (*) ARE ROHS COMPLIANT BY EXEMPTION, ALL OTHERS ARE ROHS COMPLIANT.

CIRCUIT SIZE	PLUG ASSEMBLY MATERIAL NO.	DIM "A"	DIM "B"	DIM "C"
2	39484-0002	.351/8.92	.158/4.00	.000/0.00
3	39484-0003	.508/12.90	.315/8.00	.000/0.00
4	39484-0004	.666/16.92	.473/12.00	.158/4.00
5	39484-0005	.823/20.90	.630/16.00	.315/8.00
6	39484-0006	.981/24.92	.788/20.00	.315/8.00
7	39484-0007	1.138/28.91	.945/24.00	.473/12.00
8	39484-0008	1.296/32.92	1.103/28.00	.473/12.00
9	39484-0009	1.453/36.91	1.260/32.00	.630/16.00
10	39484-0010	1.611/40.92	1.418/36.00	.630/16.00
11	39484-0011	1.768/44.91	1.575/40.00	.788/20.00
12	39484-0012	1.926/48.92	1.733/44.00	.788/20.00
13	39484-0013	2.083/52.91	1.890/48.00	.945/24.00
14	39484-0014	2.241/56.92	2.048/52.00	.945/24.00
15	39484-0015	2.398/60.78	2.205/56.00	1.103/28.00
16	39484-0016	2.556/64.92	2.363/60.00	1.103/28.00
17	39484-0017	2.713/68.91	2.520/64.00	1.260/32.00
18	39484-0018	2.871/72.92	2.678/68.00	1.260/32.00
19	39484-0019	3.028/76.91	2.835/72.00	1.418/36.00
20	39484-0020	3.186/80.92	2.993/76.00	1.418/36.00
21	39484-0021	3.343/84.91	3.150/80.00	1.575/40.00
22	39484-0022	3.501/88.93	3.308/84.00	1.575/40.00
23	39484-0023	3.658/92.91	3.465/88.00	1.733/44.00
24	39484-0024	3.816/96.93	3.623/92.00	1.733/44.00

ITEM #	QTY.	DESCRIPTION	MATERIAL & FINISH
5	XX	SCREW	STEEL, NICKEL PLATED
4	XX	CAGE (*)	COPPER ALLOY, NICKEL PLATED
3	XX	TERMINAL	COPPER ALLOY, 100µ" TIN PLATED
2	1	COVER	GLASS FILLED POLYAMIDE 6T/66, BLACK
1	1	BODY	GLASS FILLED POLYAMIDE 6T/66, BLACK

REVD NOTES: TB WAS MAP EC NO: WNA2012-0110 DRWINSTONE 2011/08/19 CHKDK-JOZNIK 2011/11/23 APPRETTIUS 2011/11/23	QUALITY SYMBOLS	GENERAL TOLERANCES (UNLESS SPECIFIED)	DIMENSION STYLE	SCALE	DESIGN UNITS	THIRD ANGLE PROJECTION	
	▽=0 ▽=0	mm INCH 4 PLACES ± --- ± --- 3 PLACES ± --- ± .015 2 PLACES ± 0.38 ± --- 1 PLACE ± --- ± --- ANGULAR ± 1°	IN/MM DRAWN BY C. YORK CHECKED BY R. DEROSS APPROVED BY R. DEROSS MATERIAL NO. SEE CHART	DATE 2008/05/21 DATE 2008/05/21 DATE 2008/05/21	2:1 INCH	4.00MM PLUG ASSEMBLY TIN PLATING	MOLEX INCORPORATED
	DRAFT WHERE APPLICABLE MUST REMAIN WITHIN DIMENSIONS	THIS DRAWING CONTAINS INFORMATION THAT IS PROPRIETARY TO MOLEX INCORPORATED AND SHOULD NOT BE USED WITHOUT WRITTEN PERMISSION	DOCUMENT NO. SD-39484-001 SHEET NO. 1 OF 1				