

Excellent Integrated System Limited

Stocking Distributor

Click to view price, real time Inventory, Delivery & Lifecycle Information:

[Molex Connector Corporation](#)

[0437962024](#)

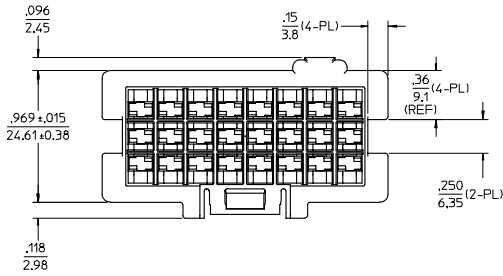
For any questions, you can email us directly:

sales@integrated-circuit.com

12 11 10 9 8 7 6 5 4 3 2 43796

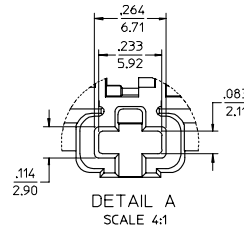
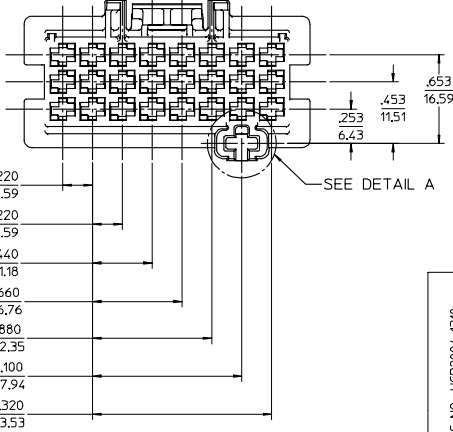
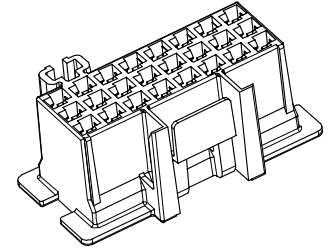
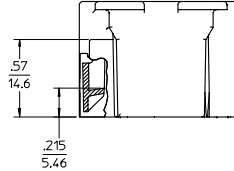
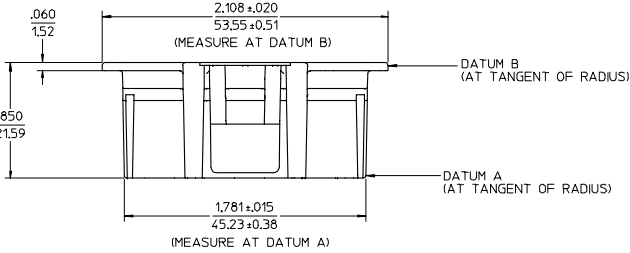
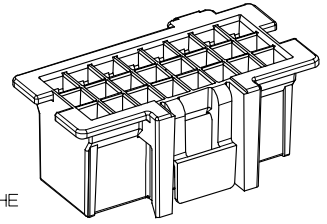
J
I
H
G
F
E
D
C
B
A

J
I
H
G
F
E
D
C
B
A



NOTES:

1. MATERIAL: 6/6 NYLON, UL94V-2, COLOR: BLACK
2. FINISH: NOT APPLICABLE
3. PRODUCT SPECIFICATION: PSX-44441-9999
4. USE TERMINALS: 43375-*
5. SEE AS-43796-001 FOR THE DESCRIPTION OF THE MATING INTERFACE.



43796-2024

IEC NO: UCP2004-1310 DRW: HKANARAJD004/01/20 CHK: HKANARAJD004/01/20 APPR: BWIRKUS 2003/03/14	QUALITY SYMBOLS	GENERAL TOLERANCES (UNLESS SPECIFIED)	SCALE 2:1	DESIGN UNITS INCH	THIRD ANGLE PROJECTION	REVISE ON CAD ONLY
	DESCRIPTION ▼-0 ∇-0	4 PLACES ± --- ± --- 3 PLACES ± --- ± .007 2 PLACES ± 0.18 ± .010 1 PLACE ± 0.25 ± --- ANGULAR ± 1/2°	DIMENSION STYLE IN/MM DRAWN BY DATE T GREGORI 2003/03/13 CHECKED BY DATE B WIRKUS 2003/03/14 APPROVED BY DATE J COMERCI 2003/03/17	TITLE CONNECTOR HOUSING 24 - CIRCUITS, W/ FLANGE TIMER APPLICATION		
		DRAFT WHERE APPLICABLE MUST REMAIN WITHIN DIMENSIONS		MOLEX INCORPORATED MATERIAL NO. 43796-2024 DOCUMENT NO. SD-43796-002 SHEET NO. 1 OF 1		
		THIS DRAWING CONTAINS INFORMATION THAT IS PROPRIETARY TO MOLEX INCORPORATED AND SHOULD NOT BE USED WITHOUT WRITTEN PERMISSION				

11 10 9 8 7 6 5 4 3 2 1