

Excellent Integrated System Limited

Stocking Distributor

Click to view price, real time Inventory, Delivery & Lifecycle Information:

[Molex Connector Corporation](#)
[0442820009](#)

For any questions, you can email us directly:

sales@integrated-circuit.com

NOTES:

1) MATERIAL:
HOUSING & INSULATOR: NYLON(PA), GLASS FILLED, UL94V-0, COLOR: BLACK
TERMINALS: PHOSPHOR BRONZE, .012/(0.30) THICK
SHIELD: BRASS

2) FINISH:
TERMINALS:
A = SELECT GOLD IN CONTACT AREA: .000050/(0.00127) MIN.
*SELECT MATTE TIN IN PC TAIL AREA: .000100/(0.00254) MIN.
WITH OVERALL NICKEL UNDERPLATE: .000050/(0.00127) MIN.
B = SELECT GOLD IN CONTACT AREA: .000030/(0.00076) MIN.
*SELECT MATTE TIN IN PC TAIL AREA: .000100/(0.00254) MIN.
WITH OVERALL NICKEL UNDERPLATE: .000050/(0.00127) MIN.
C = SELECT GOLD IN CONTACT AREA: .000015/(0.00038) MIN.
*SELECT MATTE TIN IN PC TAIL AREA: .000100/(0.00254) MIN.
WITH OVERALL NICKEL UNDERPLATE: .000050/(0.00127) MIN.

SHIELD:
*100 MICRONS NICKEL OVER 50 MICRONS COPPER UNDERPLATE
PCB GROUND TABS DIPPED IN TIN
*THE PRIMARY SHIPPING CARTON WILL BE LABELED "COMPLIANT TO RoHS
DIRECTIVE 2002/95/EC AND ELV ANNEX II OF DIRECTIVE 2000/53/EC".
CARTONS WITHOUT THIS LABEL MAY CONTAIN PRODUCT WITH TIN-LEAD
IN THE PC TAILS AND/OR SHIELD.

3) PRODUCT SPECIFICATION AND PROCESSING PARAMETERS: PS-43743-0001.

4) PACKAGING SPECIFICATION:
CONNECTOR ASSEMBLIES TO BE PACKAGED USING TAPE & REEL SYSTEM
PER PACKAGING DRAWING PK-70873-7006.

COPLANARITY SPECIFICATION:
WHEN AN ASSEMBLY IS PLACED UPON A LEVEL SURFACE, THE MAXIMUM
GAP BETWEEN THE LEVEL SURFACE AND ALL TERMINAL TAILS AND
FRONT SOLDER TAB IS .006/(0.15).

THRU HOLES .094±.002/(2.39±0.05) ARE FOR SHIELDS WITH LOCATION TABS ONLY.
AVAILABLE WITH (4) OPTIONAL SIDE GROUND TABS (OMITTED FOR SIDE TO SIDE
STACKABILITY).

AVAILABLE WITH (2) OPTIONAL LOCATION TABS FOR LOCATING COMPONENT
TO PCB AND/OR GROUNDING TO PCB.

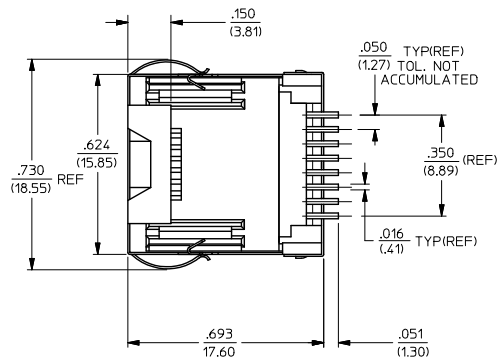
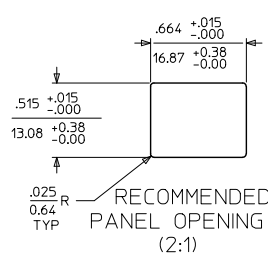
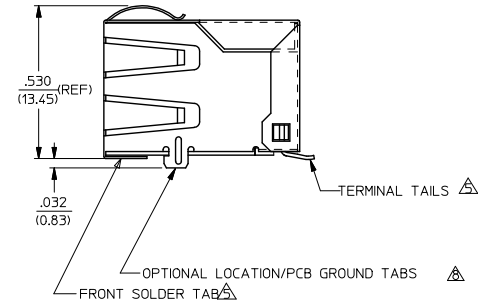
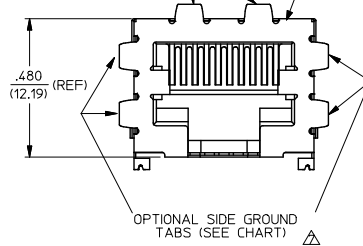
FOR ASSEMBLIES HAVING VOIDED CIRCUITS, THE TAIL PORTION IS CUT
AND REMOVED. THE MATING PORTION OF THE TERMINAL REMAINS INTACT.

CONFORMS TO FCC REGULATION PART 68.5 FOR MODULAR JACKS.

THIS PART CONFORMS TO CLASS B REQUIREMENTS OF COSMETIC
SPECIFICATION PS-45499-002.

OPTIONAL TOP GROUND TABS
(SEE CHART)

SHIELDED SMT
MODJACK ASSEMBLY



44282-1004	A	NO	NO	YES	NONE
44282-0012	C	NO	YES	NO	NONE
44282-0011	B	NO	YES	NO	NONE
44282-0010	A	NO	YES	NO	NONE
44282-0009	C	YES	YES	NO	NONE
44282-0008	B	YES	YES	NO	NONE
44282-0007	A	YES	YES	NO	NONE
44282-0006	C	NO	YES	YES	NONE
44282-0005	B	NO	YES	YES	NONE
44282-0004	A	NO	YES	YES	NONE
44282-0003	C	YES	YES	YES	NONE
44282-0002	B	YES	YES	YES	NONE
44282-0001	A	YES	YES	YES	NONE

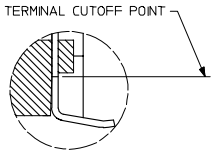
44282-0001, 44282-0002
& 44282-0003 SHOWN

ASSEMBLY MAT. NO.	TERMINAL PLATING	SHIELD SIDE TABS	SHIELD TOP TABS	LOCATION TABS	VOIDED CIRCUITS
12					
11					
10					
9					
8					
7					
6					
5					
4					
3					
2					
1					

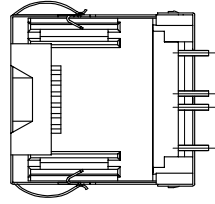
1b_frame_C_P_ME_T
Rev. E 2006/04/15

REVISED NOTES EC NO: UCP2009-1244 DRAWN: JACUSTE/ELE/2008/12/10 CHKD: J.BELL APPR: S.MITH 2008/12/10	QUALITY SYMBOLS ▽=0 ▽=0	GENERAL TOLERANCES (UNLESS SPECIFIED) mm INCH 4 PLACES ± --- ± --- 3 PLACES ± --- ± .010 2 PLACES ± 0.25 ± --- 1 PLACE ± --- ± --- ANGULAR ± 1/2°	DIMENSION STYLE IN/MM DRAWN BY STAMBAUG CHECKED BY WIRKUS APPROVED BY EDGLEY DATE 99/06/03 DATE 99/06/03 DATE 99/06/03	SCALE 1:1 DESIGN UNITS INCH THIRD ANGLE PROJECTION	TITLE SINGLE PORT, SHIELDED SIZE 8, 8 CIRCUIT SMT MODJACK	MATERIAL NO. SEE CHART	DOCUMENT NO. SD-44282-001	SHEET NO. 1 OF 2
		DRAFT WHERE APPLICABLE MUST REMAIN WITHIN DIMENSIONS		MOLEX INCORPORATED		THIS DRAWING CONTAINS INFORMATION THAT IS PROPRIETARY TO MOLEX INCORPORATED AND SHOULD NOT BE USED WITHOUT WRITTEN PERMISSION		
		D3		SIZE C		THIS DRAWING CONTAINS INFORMATION THAT IS PROPRIETARY TO MOLEX INCORPORATED AND SHOULD NOT BE USED WITHOUT WRITTEN PERMISSION		

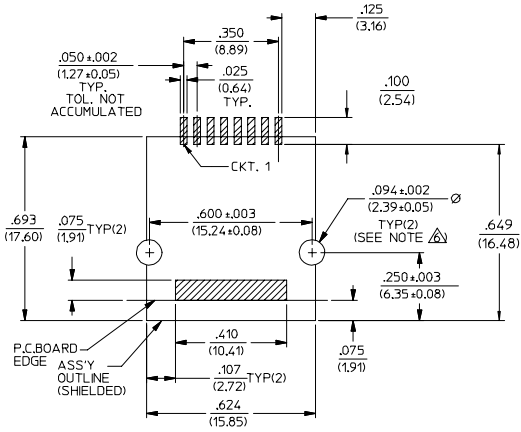
2	D2
1	D3
SHT	REV



VIEW SHOWING TYPICAL TERMINAL CUTOFF OF TAIL (SEE NOTE 10) FOR VOIDED CIRCUITS.



TYPICAL VIEW SHOWING VOIDED CIRCUIT (CIRCUITS 2,3,6 & 7 SHOWN VOIDED)



PC BOARD LAYOUT FOR 8 POSITION HOUSING
(COMPONENT SIDE OF BOARD)

NOTES:
1. RECOMMENDED MINIMUM PCB THICKNESS: .034/0.86

SEE SHEET ONE I.C. NO: UCF2008-0143 DRAWN BY: JRELL 2007/07/24 CHK'D BY: SCHMIDT 2007/07/30 APPROVED BY: SMITH 2007/08/14 DESCRIPTION:	QUALITY SYMBOLS	GENERAL TOLERANCES (UNLESS SPECIFIED)	DIMENSION STYLE IN/MM	SCALE 4:1	DESIGN UNITS INCH	THIRD ANGLE PROJECTION
	▽=0 ▽=0	4 PLACES ± .010 ± .010 3 PLACES ± .010 ± .010 2 PLACES ± 0.25 ± .010 1 PLACE ± .010 ± .010 ANGULAR ± 1/2°	DRAWN BY: STAMBAUG DATE: 99/06/03 CHECKED BY: WIRKUS DATE: 99/06/03 APPROVED BY: EDGLEY DATE: 99/06/03	TITLE	SURFACE MOUNT MODULAR JACK W/ SHIELD	
	DRAFT WHERE APPLICABLE MUST REMAIN WITHIN DIMENSIONS	MATERIAL NO.	DOCUMENT NO.		MOLEX INCORPORATED	
	SIZE C	SEE CHART	SD-44282-001		SHEET NO. 2 OF 2	
THIS DRAWING CONTAINS INFORMATION THAT IS PROPRIETARY TO MOLEX INCORPORATED AND SHOULD NOT BE USED WITHOUT WRITTEN PERMISSION						