

## Excellent Integrated System Limited

Stocking Distributor

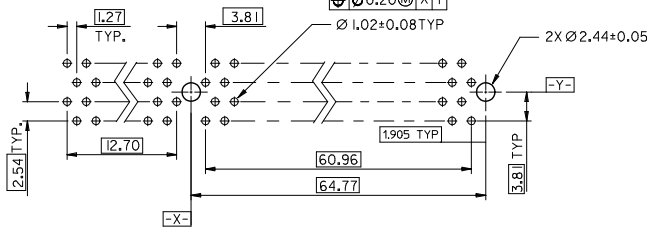
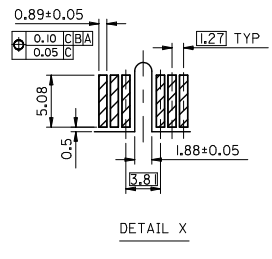
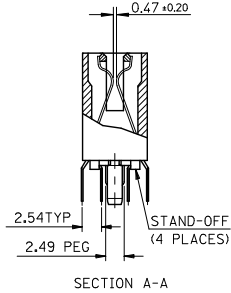
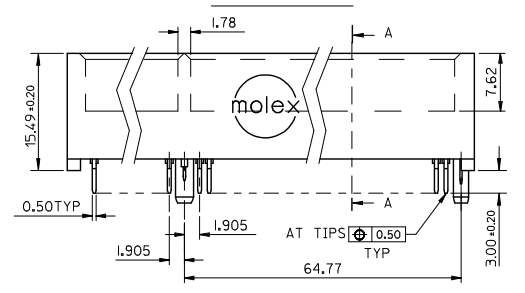
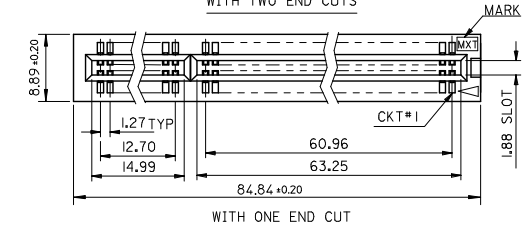
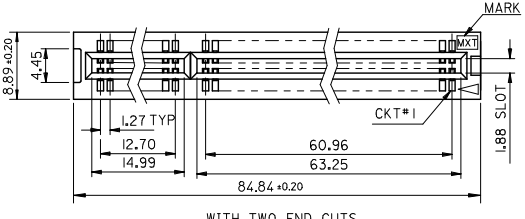
Click to view price, real time Inventory, Delivery & Lifecycle Information:

[Molex Connector Corporation](#)  
[0482006002](#)

For any questions, you can email us directly:

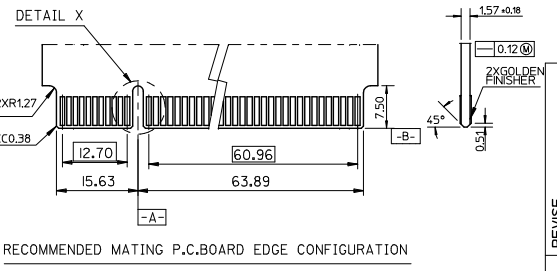
[sales@integrated-circuit.com](mailto:sales@integrated-circuit.com)

10 9 8 7 6 5 4 3 2 1



RECOMMENDED CONNECTOR MOUNTING HOLE PATTERN

- NOTES:
- MATERIAL : HOUSING - PPS  
TERMINAL - PHOSPHOR BRONZE.
  - FINISH 0 - GOLD FLASH IN CONTACT AREA, 152um/60In MIN. TIN IN SOLDER TAIL, BOTH OVER 0.76um/30In MIN. NICKEL OVERALL.
    - 1 - 0.25um/10In MIN. GOLD IN CONTACT AREA, 152um/60In MIN. TIN IN SOLDER TAIL, BOTH OVER 0.76um/30In MIN. NICKEL OVERALL.
    - 2 - 0.38um/15In MIN. GOLD IN CONTACT AREA, 152um/60In MIN. TIN IN SOLDER TAIL, BOTH OVER 0.76um/30In MIN. NICKEL OVERALL.
    - 3 - 0.76um/30In MIN. GOLD IN CONTACT AREA, 152um/60In MIN. TIN IN SOLDER TAIL, BOTH OVER 0.76um/30In MIN. NICKEL OVERALL.
    - 4 - 0.50um/20In MIN. GOLD IN CONTACT AREA, 152um/60In MIN. TIN IN SOLDER TAIL, BOTH OVER 0.76um/30In MIN. NICKEL OVERALL.
  - PRODUCT SPEC : PER PS-48200-001
  - TEST SUMMARY : PER TS-48200-001
  - PACKAGE SPEC : PER PK-48200-001
  - LEAD-FREE AND ROHS COMPLIANCE PRODUCT
- PART NO. LEGEND : 48200 - 6 0 \* \* \*
- |  |                 |
|--|-----------------|
| PEG VERSION & COLOR                      | PLATING VERSION |
| 0 : STANDARD ; BROWN , WITH ONE END CUT  | 0               |
| 1 : STANDARD ; WHITE , WITH ONE END CUT  | 1               |
| 2 : STANDARD ; BROWN , WITH TWO END CUTS | 2               |
| 3 : STANDARD ; BROWN , WITH TWO END CUTS | 3               |
| 4 : STANDARD ; WHITE , WITH TWO END CUTS | 4               |



RECOMMENDED MATING P.C. BOARD EDGE CONFIGURATION

REVISE EC NO: SH2009-0692 DRAWN: FANGOS CHKD: 2009/05/11 APPR: HMMANG 2009/06/26	DESCRIPTION 2X GOLDEN FINISHER	GENERAL TOLERANCES (UNLESS SPECIFIED)		DIMENSION STYLE MM ONLY	SCALE	DESIGN UNITS METRIC	THIRD ANGLE PROJECTION
		mm	INCH				
REV D	DESCRIPTION 2X GOLDEN FINISHER	4 PLACES ± --- ± ---	± --- ± ---	DRAWN BY TOM	DATE 2005/02/04	TITLE ASS'Y 1.27MM EDGE CARD CONNECTOR (120 CKTS) (LEAD-FREE VERSION)	SHEET NO. 1 OF 1
		3 PLACES ± --- ± ---	± --- ± ---	CHECKED BY	DATE 2005/02/04		
		2 PLACES ± 0.25 ± ---	± --- ± ---	ALL IN	2005/02/04	MOLEX INCORPORATED	DOCUMENT NO. SD-48200-003
		1 PLACE ± 0.25 ± ---	± --- ± ---	APPROVED BY WWSCHANG	DATE 2005/02/04		
		ANGULAR ± 3 °		MATERIAL NO. SEE TABLE			
		DRAFT WHERE APPLICABLE MUST REMAIN WITHIN DIMENSIONS		SIZE A3	THIS DRAWING CONTAINS INFORMATION THAT IS PROPRIETARY TO MOLEX INCORPORATED AND SHOULD NOT BE USED WITHOUT WRITTEN PERMISSION		

10 9 8 7 6 5 4 3 2 1