

## Excellent Integrated System Limited

Stocking Distributor

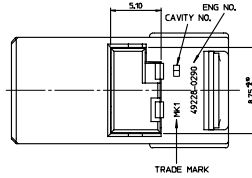
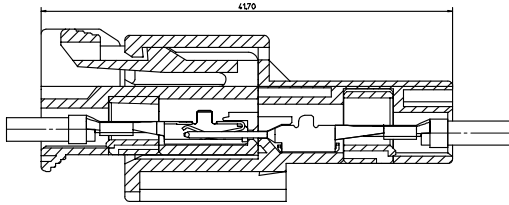
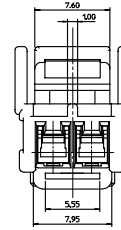
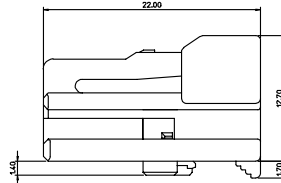
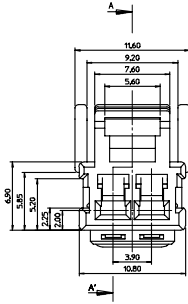
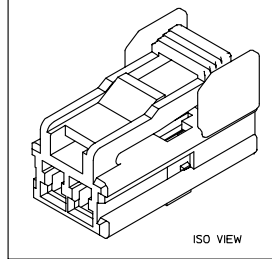
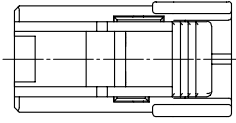
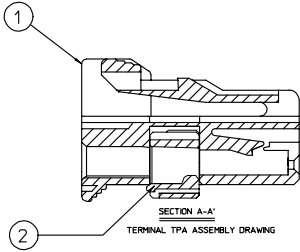
Click to view price, real time Inventory, Delivery & Lifecycle Information:

[Molex Connector Corporation](#)  
[0492280210](#)

For any questions, you can email us directly:

[sales@integrated-circuit.com](mailto:sales@integrated-circuit.com)

PROJECT NO. DWG. NO. SD-49228-001  
SIMILAR ITEM  
E  
D  
C  
B  
DO NOT SCALE DRAWING  
DIMENSION IN METRIC



<NOTE>

1. MATERIAL : POLYESTER(PBT) UL 94HB
2. APPLICABLE TERMINAL : 49702-6702 (AVS,CAVS 0.3-0.5)  
49702-6802 (AVS,CAVS 0.85-1.25)  
49702-6902 (AVSS,CAVS 2.10)
3. APPLICABLE MALE HOUSING ASSY 2P : 49229-0210

NO.	PART NO.	PART NAME	REMARK
1	49228-0290	.090 F/HSG 2P	NATURAL
2	49228-0283	.090 F/TPA 2P	YELLOW
3	49228-0210	.090 F/HSG ASSY 2P	-

NEW PRODUCT RELEASE ECN NO.49228-0290 DRAWN BY: SYPARK 05/17/26 CHECKED BY: SYPARK 05/17/26 APPROVED BY: SYPARK 05/17/26	QUALITY SYMBOL MAJOR MINOR CRITICAL	GENERAL TOLERANCES: UNLESS SPECIFIED: DIM. INCH.	SCALE: 4:1 DESIGN UNITS: DIM IN MM INCH	DRAWN BY & DATE SYPARK 05/02/23	CHECKED BY & DATE SYPARK 05/02/23	APPROVED BY & DATE SYPARK 05/02/23	TITLE 090 FEMALE HOUSING 2P	DIMENSIONS: THRD ANGLE PROJECTION	SHT REV	REVISION CAD ONLY
	4 PLACES ±0.1 3 PLACES ±0.1 2 PLACES ±0.15 1 PLACE ±0.20	4 PLACES ±0.1 3 PLACES ±0.1 2 PLACES ±0.15 1 PLACE ±0.20	ANGLES: ± 1° DRAFT WHERE APPLICABLE MUST REMAIN WITHIN DIMENSIONS	CAD FILE NAME: SD49228.M	MATERIAL NO. SEE TABLE DRAWING NO. SD-49228-001 SHEET NO. 1 OF 1	MOLEX INCORPORATED	THIS DRAWING CONTAINS INFORMATION THAT IS PROPRIETARY TO MOLEX INCORPORATED AND SHOULD NOT BE USED WITHOUT WRITTEN PERMISSION.	KOREA	MX-A2	