

Excellent Integrated System Limited

Stocking Distributor

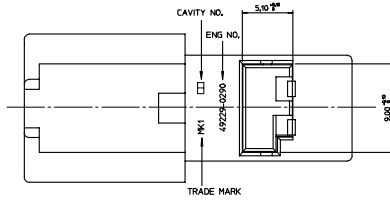
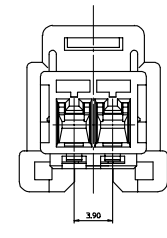
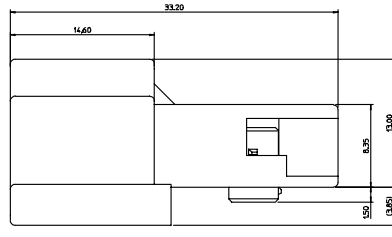
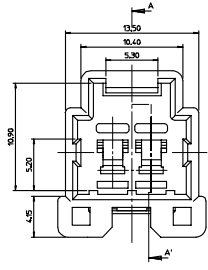
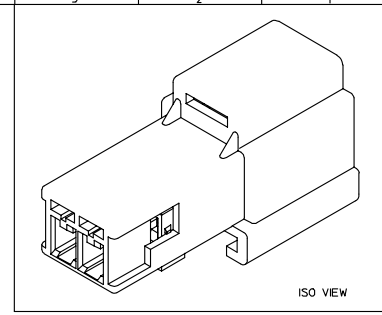
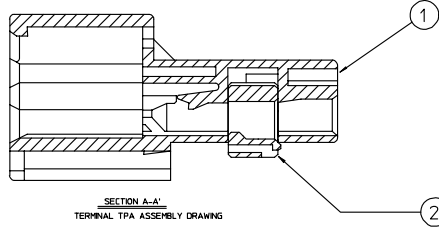
Click to view price, real time Inventory, Delivery & Lifecycle Information:

[Molex Connector Corporation](#)
[0492290210](#)

For any questions, you can email us directly:

sales@integrated-circuit.com

PROJECT NO. SD-49229-001
SIMILAR ITEM
DO NOT SCALE DRAWING
DIMENSION IN METRIC



- <NOTE>
1. MATERIAL : POLYESTER(PBT) UL 94HB
 2. APPLICABLE TERMINAL : 57919-6702 (AVS,CAVS 0.3-0.5)
57919-6802 (AVS,CAVS 0.85-1.25)
57919-6902 (AVSS,CAVS 2.0)
 3. APPLICABLE FEMALE HOUSING ASSY 2P : 49228-0210

NO.	PART NO.	PART NAME	REMARK
1	49229-0290	090 M/HSG 2P	NATURAL
2	49229-0283	090 M/TPA 2P	YELLOW
3	49229-0210	090 M/HSG ASSY 2P	-

NEW PRODUCT RELEASE ECN NO.49229-0059 DRAWN BY PARK 05/17/26 CHECKED BY CHUNG 05/17/26 APPROVED BY KIM 05/17/26	QUALITY SYMBOL MAJOR MINOR IDENTICAL	GENERAL TOLERANCES: UNLESS SPECIFIED:	SCALE: 4:1	DESIGN UNITS: DIM IN () INCH	THIRD ANGLE PROJECTION	TITLE: 090 MALE HOUSING 2P	SHIT: REV
		4 PLACES ±0.15	DRAWN BY & DATE: SYPARK 05/02/25	1/16 1/8 3/16 1/2 3/4 1	1/16 1/8 3/16 1/2 3/4 1	REVISION ON CAD ONLY	
		3 PLACES ±0.10	CHECKED BY & DATE: SYPARK 05/02/25	APPROVED BY & DATE: SYPARK 05/02/25		MOLEX INCORPORATED	
		2 PLACES ±0.15	CAD FILE NAME: SD49229J		MATERIAL NO. SEE TABLE		DRAWING NO. SD-49229-001
		1 PLACE ±0.20	DRAFT WHERE APPLICABLE MUST REMAIN WITHIN DIMENSIONS		THIS DRAWING CONTAINS INFORMATION THAT IS PROPRIETARY TO MOLEX INCORPORATED AND SHOULD NOT BE USED WITHOUT WRITTEN PERMISSION.		SHEET NO. 1 OF 1
REV: A		ANGULAR: ± 1°		KOREA		MX-A2	