

## Excellent Integrated System Limited

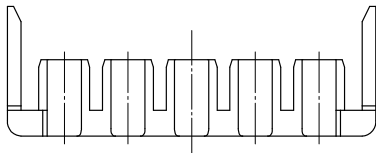
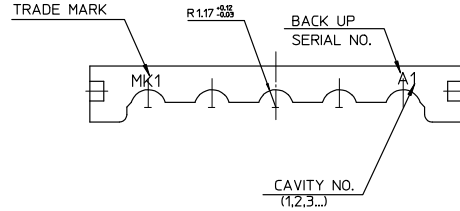
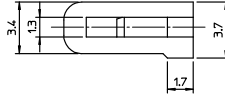
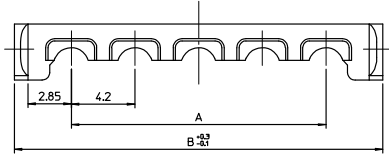
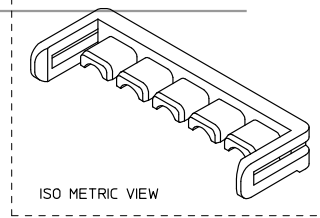
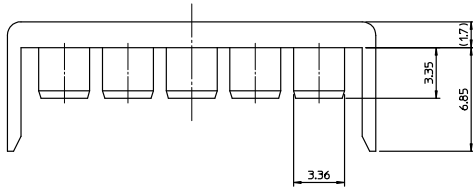
Stocking Distributor

Click to view price, real time Inventory, Delivery & Lifecycle Information:

[Molex Connector Corporation](#)  
[0496270382](#)

For any questions, you can email us directly:

[sales@integrated-circuit.com](mailto:sales@integrated-circuit.com)



-TABLE-

49627-1182	496271182	42	49.5	11
49627-1082	496271082	37.8	45.3	10
49627-0982	496270982	33.6	41.1	09
49627-0682	496270682	21.0	28.5	06
49627-0582	496270582	16.8	24.3	05
49627-0382	496270382	8.4	15.9	03

NOTES

1. MATERIAL : POLYAMIDE(PA66),GLASS FILLED, UL94V-HB  
COLOR : RED
2. APPLICABLE TERMINAL : 5556 T2A SERISE.  
5556 T SERISE.
3. MATED WITH HOUSING : 49624-\*\*90 SERIES.
4. PRODUCT SPECIFICATION : PS-49623-001

ENTER DESCRIPTION EC NO: KOR2008-0134 DRWNSKHAND1 2008/07/27 CHYKDWY YANG 2008/07/29 APPR:YUNSIKKIM 2008/07/29	QUALITY SYMBOLS ▽=0 ▽=0	GENERAL TOLERANCES (UNLESS SPECIFIED)		DIMENSION STYLE MM ONLY		SCALE 4:1	DESIGN UNITS METRIC	THIRD ANGLE PROJECTION
		4 PLACES ± --- ± --- 3 PLACES ± --- ± --- 2 PLACES ± 0.3 ± --- 1 PLACE ± 0.3 ± ---	ANGULAR ± 1 °	DRAWN BY SK. HAN	DATE 2008/01/28	TITLE 4.2MM W/W TPA CONN. TPA FOR FEMALE HOUSING		MOLEX INCORPORATED
REV A	DRAFT WHERE APPLICABLE MUST REMAIN WITHIN DIMENSIONS	ENTER PART		MATERIAL NO. A3	DATE 2008/01/28	DOCUMENT NO. SD-49627-001	SHEET NO. 1 OF 00	