

Excellent Integrated System Limited

Stocking Distributor

Click to view price, real time Inventory, Delivery & Lifecycle Information:

[Molex Connector Corporation](#)
[0505988100](#)

For any questions, you can email us directly:

sales@integrated-circuit.com

DWG. NO.
SD-50598-8-00

E

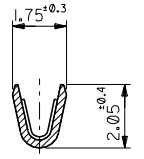
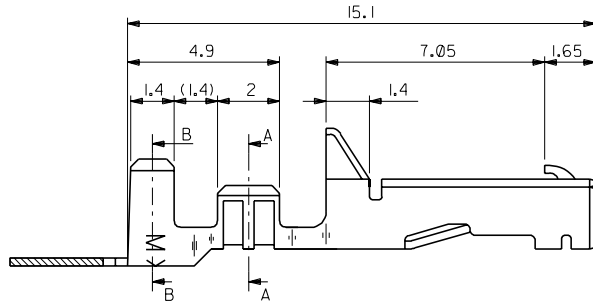
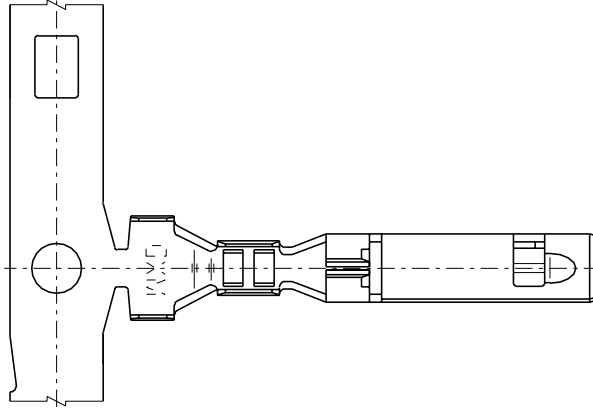
D

C

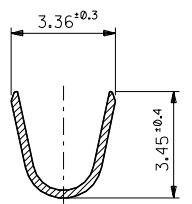
B

A

DIMENSIONS IN METRIC DO NOT SCALE DRAWING



断面 A-A
SECT. A-A



断面 B-B
SECT. B-B

| | |
|------------|--------------|
| 50598-8100 | バラ状 LOOSE |
| 50598-8000 | 連鎖状 CHAIN |
| ENG. NO. | 端子形状 FORM |

注記
NOTES

- 適合ハウジング : 51138 , 51142 シリーズ
APPLICABLE HOUSING : 51138 , 51142 SERIES
- 材料 : 銅合金, 錫メッキ (t=0.25)
MATERIAL : COPPER ALLOY , TIN PLATED (t=0.25)

| | |
|-------------------------|-------|
| 角度 ANGLE | ±3° |
| 30°以上 OVER | ±0.3 |
| 10°以上 OVER 30°未達 UNDER | ±0.25 |
| 10°未達 UNDER | ±0.2 |
| 一般公差 GENERAL TOLERANCES | |

| | |
|----------------------|-------------------|
| 材料 MATERIAL | 注記参照 SEE NOTES |
| 仕上げ FINISH | 注記参照 SEE NOTES |
| 適用電線範囲 WIRE RANGE | AWG #20-26 |
| 被覆外径 INS. RANGE | ∅1.2-2.35 |
| 新規作成 PROPOSED | 0 |
| 記号 LTR | 新機作成 (JCG0392) |
| 承認内容 REVISION RECORD | |
| 目付 DATE | 95/12/15 |
| 目付者 CHECK | M.FUKUSHIMA |

| | |
|-------------------|-------------------|
| DRAWN BY 95/12/15 | CHK'D BY 95/12/15 |
| H.HASEGAWA | N.M.HIRAMOTO |
| APP'D BY 95/12/15 | 尺度 |
| M.FUKUSHIMA | SCALE 8 : 1 |

| | |
|--|--|
| MOLEX-JAPAN CO.,LTD. 日本モレックス株式会社 | |
| REVISE ONLY ON CAD SYSTEM | |
| TITLE 名称 | |
| 3.96 W/W & W/B CONN. CRIMP TERMINAL | |

| | |
|---------------|-----|
| DWG. NO. | REV |
| SD-50598-8-00 | 0 |

THIS DRAWING CONTAINS INFORMATION THAT IS PROPRIETARY TO MOLEX(JAPAN) AND SHOULD NOT BE USED WITHOUT WRITTEN PERMISSION
本図面は日本モレックス(株)の所有する情報を含むもので 当社の許可なく複製を禁止する。
EN-01C(032)MXJ-32

8

7

6

5

4

3

2

1

50598.S11